

# theLYRIC

50<sup>th</sup> Anniversary of "Alice's Restaurant"  
with **Arlo Guthrie**

Summer 2014

**2014-15 Season Shows on Sale  
to Members Only Now**

**The Time Jumpers**  
with Vince Gill,  
Dawn Sears, Kenny Sears,  
and "Ranger Doug" Green

**AILEY II**

**A Darlene Love  
Christmas**

**Men are from Mars  
Women are From Venus — LIVE!**

**CLINT BLACK**

**UNDER  
CONSTRUCTION**

**REOPENING FALL 2014**

RENOVATION PLANS INSIDE



# LAW OFFICES OF BONNIE A. BROWN

514 Colorado Avenue | Stuart, Florida 34994

(772) 221-9024 | FAX: (772) 221-9086

www.bonnieabrownpa.com | info@bonnieabrownpa.com



## **REAL ESTATE LAW**

- Residential & Commercial
- For Sale By Owner
- Business Acquisitions & Sales

## **ESTATE PLANNING**

- Last Will & Testament
- Living Trust
- Durable Power of Attorney
- Living Will
- Health Care Surrogate

## **PROBATE**

- Summary Administration
- Formal Administration

## SEASON SPONSORS

The Friends of the Lyric, Inc. would like to thank these sponsors who have generously helped to underwrite the costs of our 2014-2015 Season.

*the Gifford*

DOWNTOWN APARTMENT MANAGEMENT LLC  
—Marie and Michael Braid—

 **Leighton**  
Transportation

**Indian River**  
MAGAZINE

MCCARTHY  
SUMMERS  
BOBKO  
WOOD  
NORMAN  
BASS  
& MELBY P.A.  
Attorneys at Law

**Oculina Bank**  
"The Friendly Bank"™



- 4 Board of Directors & Staff
- 6 Letter from the Executive Director
- 14 The Lyric Announces 2014-15 Season
- 16 Historical Timeline
- 18 2014-15 Season Lineup
- 21 Take A Seat
- 24 Lyric's Awesome Summer Camp
- 25 Volunteer Bartenders & Ushers
- 26 2013-2014 Director's Circle & Contributors
- 28 Theatre Box Office and General Information
- 28 New Seating Chart
- 30 Nostalgia Series
- 31 Sponsorship Opportunities
- 32 Discovery Series
- 34 Broadway Series



**On the cover:**


Renovation Update!

Read about it on page 6


Photo credit: thomas winter



Welcome to the  
**SAILOR'S RETURN**



- Indoor / Outdoor Bar & Dining • Banquets & Parties
- Isinglass Enclosure on the Entire Patio when Cold or Rainy
- Complimentary Valet Parking
- Come by Boat - 930 Feet of Courtesy Docking (Latitude 27.2 / Longitude -80.2538)



Reservations Recommended! Check for our Entertainment schedule at:  
**772-872-7250 TheSailorsReturn.com**

Open for Lunch & Dinner: 11:30am - Closing • 625 Southwest Anchorage Way, Stuart, FL.

Always Be Celebrating!



Call Us - We Have It All

**EVENTMAKERS**  
INTERNATIONAL

Party Rentals  
Tents  
Creative Design  
Food Catering  
Liquor Catering

772.286.1841 • 800.228.9547  
www.eventmakers.net

## Board of Directors

<b>President</b> Ethel Christin	Stephanie Flicker Stephen Fry Marianne Hartnett Betsy Herold Hope Jochem Stacey Levy Todd Laycock Joan McGowan Rachel Scott Paul Shirley Kenan Siegel May Smyth Steven Swann Nancy Wong John Ziegler
<b>Vice President</b> Eileen Morris Tim Timmons	
<b>Treasurer</b> Frank M. Byers, Jr.	
<b>Secretary</b> Linda Weiksner	
<b>Directors</b> Eric Crawford Patty Downing	

## Advisory Board

Priscilla Baldwin Bridget Baratta Denise Belizar Daisy Carter George Coates Elaine Cook Howard Cook Lisa Fricke	Elisabeth Lahti George Lehach Natalie MacDonald Pat Pendergast Jacquelyne Schuman Patricia Simmons Gloria Wolfe Sam Zemsky
--	---

**Executive Director**  
John Loesser

## Lyric Theatre Staff

<b>Assistant Executive Director</b> Kia Fontaine Hamill	<b>Art Director</b> Michael Renfro
<b>Controller</b> Monica Soricelli	<b>Copywriter &amp; Creative Services</b> Gracie Loesser
<b>Director of Development</b> Linda Prange	<b>Manager of Bar Services</b> Mitch Meislohn
<b>Membership Director</b> Heather Long	<b>Box Office Services</b> Ron Colangelo, Sheila DeRig, Wendy Lucas, Diane Meislohn and Susan Nauss
<b>Director of Education and Operations</b> Karin Leone	<b>Volunteer Coordinator</b> Phyl Weaver
<b>Production Manager/ Technical Director</b> Robbie Shekon	<b>House Managers</b> Jean Aukerman, Linda Lambrecht, Irene Luneski and Phyl Weaver
<b>Director of Hospitality</b> Savannah Richmond	<b>House Physician</b> Richard D. Loew, D.O.
<b>Box Office Manager</b> Suzie Bausch	<b>Legal Advisor</b> Terence P. McCarthy
<b>Assistant Box Office Manager</b> Meagan Ebright	<b>Backstage Security</b> Tom Wiegierink
<b>Accounting Assistant</b> Kellie Jocoy	

**STAND OUT**  
in a crowd



our marketing solutions in digital and  
direct-mail will help your business get noticed

Mobile | Web Design | SEO/SEM | Apps | Social Media | Direct-Mail

**Ocean Media**  
solutions

772-232-8012  
3727 SE Ocean Blvd., Suite 202 • Stuart, Florida  
www.OceanMediaSolutions.com



# A letter from the Executive Director

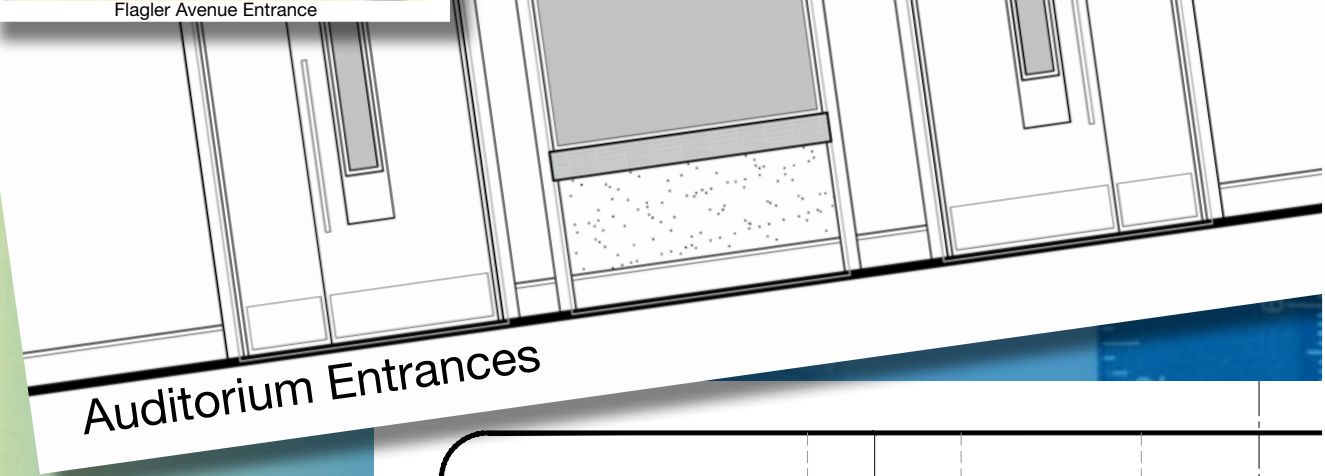
As I write this at the end of April, our Lyric is about to undergo a major facelift and improvements that are designed to make The Lyric experience even better. The Lyric was built in 1926 and has gone through lots of changes. It was built as a movie theater, not the concert hall it has grown to be, and in the process I don't think anyone thought it would become the lady it is today. We've grown to an annual attendance of over 50,000 a year with over 300 events. It's our goal now to tend to the comfort and aesthetics for our audience and correct some of the flaws inherent with an old building. The entrances on both sides of the lobby are not original. It used to be an open air arcade, where the break in lobby is now, and the south half was a store. The Will Call booth and bar were generously donated by a board member about 20 years ago and were never part

of the original building. Both of these will change, with the bar being redesigned and moved over to the elevator area, and the Will Call booth reused at the Box Office door. The walls are coated in stucco which was used to hide imperfections and will now be smoothed out or covered in drywall for a much better look throughout the theater. In the process, arches and rounded corners will be made wherever possible to improve the lines. The entrance doors on both the Osceola and Flagler sides will be replaced with modern easy to open doors with a lot of beautiful glass, and the ramp (what I call the SKI RAMP) on the Osceola entrance will go away, replaced with a much reduced incline. The doors into the seating area are also being replaced with much better and quieter doors that will reduce the noise and light coming in from the lobby.

All the orchestra level seating is being replaced with new top-of-the-line chairs with cup holders. The new chairs will be in the exact



Flagler Avenue Entrance



Auditorium Entrances



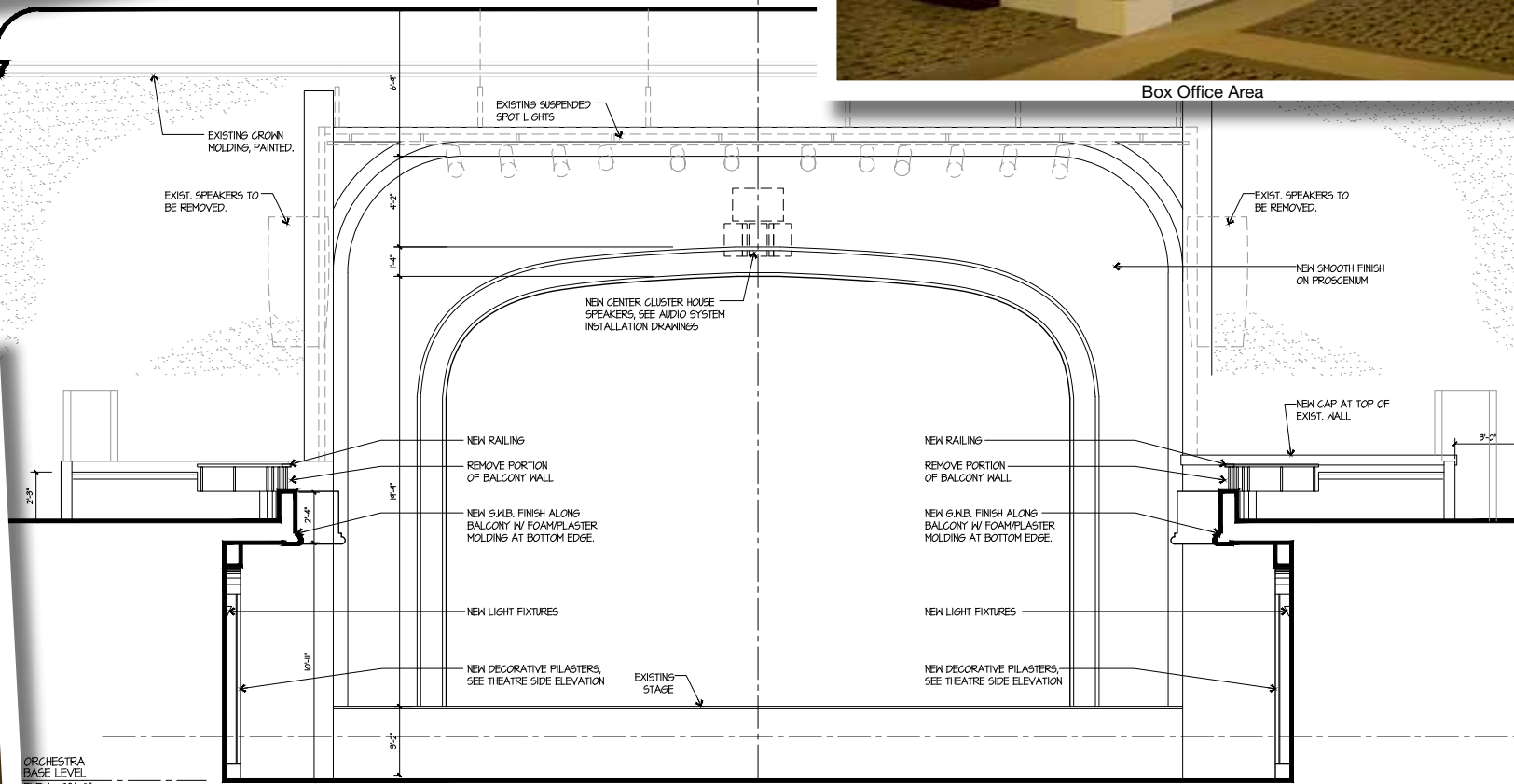
Lobby Looking East



Box Office Area



New Lobby Bar



Interior Elevation - View Looking NorthWest

SCALE: 1/4" = 1' - 0"



location as your old ones were, with the only change being different seat numbers that are standard in most theaters. The proscenium arch will get a facelift too, smoothed out and with better colors.

The large speakers you see on the sides of the proscenium will be replaced with a center cluster configuration, giving much better sound coverage to the whole theatre. The theater lighting will be embellished with a new cove position in the ceiling that will vastly improve our ability to light the stage properly. We also are going to improve the auditorium lighting as well so we'll all be able to see and read the programs that are provided at many shows. (I told the architects that I wanted to be able to read the NY times without a flashlight!!!!)

As many of you know, we've already started with some of the upgrades. The Lyric purchased a completely rebuilt 9-foot Steinway piano that started being used this last season and has gotten rave reviews from the musicians that have performed on it. A new movie screen and projector have been in use for a year with a much improved experience over the old ones.

Our new ticketing system is now fully operational with vastly improved capability allowing our customers the ability to order and print tickets at home, and our members to be able to order early without having to come to the Box Office.

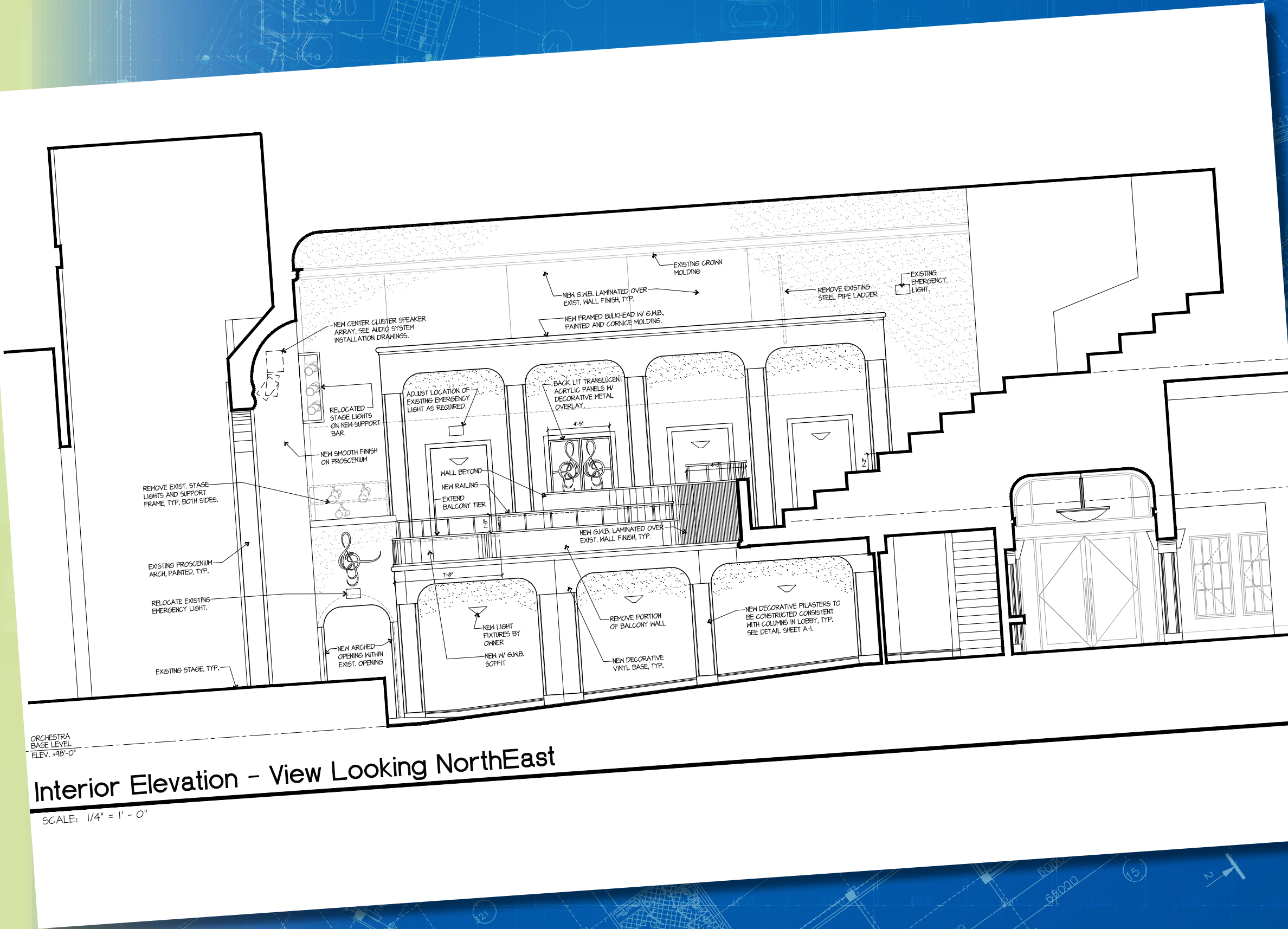
The Board, staff and I are always striving to make The Lyric a better place while protecting her almost 90-year-old bones. It takes the continued support of our donors and friends to make it what it is - a lovely and intimate concert hall that provides not only a broad range of cultural events for a not very large community, but acts as the venue for countless other organizations needing to raise funds, showcase their artists or just have a wedding or party. The Lyric represents the best in our community and on behalf of our Board of Directors, fabulous volunteers, and an amazing staff, I can't thank you enough for all your support.

(OK, we still need a few more bucks to see us to the end of the Love The Lyric Campaign, so don't stop yet.)

See you in the Fall,



*Joe Sam*





**SAILFISH POINT**  
La Rotonda! A truly magnificent oceanfront estate! 13,286 sq. ft., 7 suites and 9.5 baths. Breathtaking views! Priced below recent appraisal. \$6,950,000

**SAILFISH POINT** Truly magnificent oceanfront estate! 13,604 sq ft estate on over an acre with 150+ ft of beach frontage is designed for grand entertaining! \$7,900,000

**STUART** Custom built island colonial estate, wide water views, dockage for multiple boats & private beach/ ocean access! 10,000+ sq ft! Guest quarters w/ kitchen & sep. entrance, 4 car garage! \$3,875,000

**SAILFISH POINT** Gorgeous panoramic wide span views of the harbor! Dock with 9ft deep water & 120+ ft of waterfront. Solid brick home renovated with many upgrades. Summer kitchen, oversized screened patio & large heated pool! \$3,500,000

**SAILFISH POINT** Situated on one of the finest deep water lots in Sailfish Point. Designed for casual living, the home features water views from every room! Expansive patios, a 45ft lap pool & spectacular views of the harbor. \$2,395,000

**OCEANFRONT LOT!** Spectacular morning sunrises! Over 1/2 acre oceanfront building lot! Perfect for the beachfront home you have always dreamed of! \$575,000

**SEWALLS POINT** Solid poured concrete on concrete pilings! Sound & energy efficient! Wide water intracoastal views! 450 ft dock, 10,000 sq ft! \$1,595,000

**STUART** **WIDE WATER! SOLID POURED CONCRETE!** 5 bedrooms + 5 1/2 baths, 4 car garage & pool! Energy efficient insulation. \$1,540,000



### DISCOVER... The Treasure Coast

Finding your home is a personal process of discovery.

The most important decision in choosing your home is location, location, location.

The Treasure Coast is situated on the southeast coast of Florida. The beautiful waterways allow easy access to the Atlantic Ocean. With its many spectacular golf courses and private airport, the Treasure Coast lives up to its name ... a true Treasure!

Martin county has no skyscrapers, a four story height limitation, a charming downtown with an array of fine shops and restaurants, offering a relaxed coastal lifestyle.

We are proud to represent the finest properties, in the most amazing locations, on the Treasure Coast.

Explore our award winning web site to discover more on these fine properties!

**WWW.STRACUZZI.COM**

**Patrick Stracuzzi** REAL ESTATE TEAM RE/MAX of Stuart  
2895 SE Ocean Blvd., Stuart, FL 34996

*Pick up the phone & talk to Pat, today!*

**772-283-9991 - 800-889-0917**

*Thank you  
thank you  
thank you!*



# THE CABINET GALLERY INC

*You Dream It, We'll Build It*



**SPECIALIZING IN QUALITY CABINETRY SINCE 1997**

KITCHENS • BATHROOMS • OFFICES • WET BARS  
ENTERTAINMENT CENTERS • LAUNDRY ROOMS

**COMPLETE REMODELING AND DESIGN SERVICES AVAILABLE**

**772-692-3667 • 633 NW BAKER ROAD, STUART, FL**  
(NORTH OF THE ROOSEVELT BRIDGE, BEHIND THE NEW PUBLIX)

Hours: Mon-Fri 9 AM - 5 PM  
Evening and Weekend Appointments Available



Owner: Matthew T. Robinson  
License No. MCNS00096





## PRESERVING THE ART OF LIVING

Strategic Retirement Group, an independent advisory firm, was built on the fundamental elements of mutual trust, honesty, and respect.

We partner with our clients to help make their goals a reality—preserving their wealth, preparing for tomorrow, and putting it all together.

As a process-driven, independent wealth manager, we seek to provide invaluable financial guidance to high-net-worth individuals with complex planning needs. Our goal is to help you achieve your goals.

Our services range from coordinating an estate plan to managing risk, from income distribution planning to business succession planning. We have partnered with accountants and attorneys to help provide solutions to all of your financial needs.

If you are ready to compare the value you are receiving with what differentiates us, we encourage you to call us and schedule a mutual evaluation.



515 SW CAMDEN AVENUE • STUART, FL 34994 • (772) 781-4700 • WWW.MYSRG.NET

SECURITIES AND ADVISORY SERVICES OFFERED THROUGH COMMONWEALTH FINANCIAL NETWORK? MEMBER FINRA/SIPC, A REGISTERED INVESTMENT ADVISER. FIXED INSURANCE PRODUCTS AND SERVICES OFFERED THROUGH STRATEGIC RETIREMENT GROUP.



## FOUR QUESTIONS TO ASK ABOUT YOUR PORTFOLIO

Today's market presents challenges – such as rising interest rates – when evaluating income-producing investments. Ask yourself these four questions as they pertain to your income-producing securities:

1. What role do they play in my portfolio?
2. What will happen if interest rates rise?
3. What other risk exposure do I have?
4. What action should I take?

We have the tools, resources and expertise to help you make informed decisions and adjust appropriately, given risks in today's market.

**Call us today for help assessing whether you are well positioned for any scenario.**



**PETER F. AVONDA, CFP®, ChFC®, CRPC® AND JOSEPH S. JONES IV**  
Portfolio Managers, Senior Vice Presidents, Investments

309 SE Osceola Street, Suite 300 // Stuart, FL 34994 // 772.221.3374 // 888.668.9591 // pwmaj.com

Investing involves risk and you may incur a profit or a loss. The value of fixed income securities fluctuates and investors may receive more or less than their original investments if sold prior to maturity. Bonds are subject to price change and availability. ©2014 Raymond James & Associates, Inc., member New York Stock Exchange/SIPC. Raymond James® is a registered trademark of Raymond James Financial, Inc. 14-883FL-0070 AL 5/14



# CLINT BLACK

BLACK  
FRIDAY  
COMES  
EARLY  
TO THE  
LYRIC  
THIS  
FALL.

Clint Black  
Nov. 20<sup>th</sup> & 21<sup>st</sup> 2014 | 8:00pm

The Lyric Theatre is back again with a brand new season featuring a whole range of talented artists from high-flying acrobats to virtuoso violinists. This year, we're proud to bring the best music and entertainment from around the world to The Lyric stage.

Kicking off the season in country music style is singer-songwriter **Clint Black** (November 20, 2014; 8:00pm & November 21, 2014; 8:00pm). With over 100 songs written and 20 million albums sold worldwide, Clint Black has firmly established himself as one

of the most successful artists in the music industry. The multi-talented musician, making his Lyric Theatre debut, will continue that tradition this fall with an evening of his biggest hits, including "A Better Man" and "Killin' Time."

The Lyric welcomes **The National Acrobats of the People's Republic of China** (December 1, 2014; 5:00pm & 8:00pm) to the stage this December. With over six decades of experience, this world-class acrobatic troupe is sure to leave you breathless. Set to a score of traditional and contemporary music, The National Acrobats will perform balancing, contorting, and flying tricks across a set illuminated with colorful and creative designs.

Prepare to be taken across the Atlantic and back in time with the **Mediaeval Baebes** (December 2, 2014; 7:00pm). Singing in over five languages, including Latin and Middle English, the Mediaeval Baebes put a modern twist on mediaeval classics.

Mediaeval Baebes  
Dec. 2<sup>nd</sup> 2014 | 7:00pm



The National Acrobats of the People's Republic of China  
Dec. 1<sup>st</sup> 2014 | 5:00pm & 8:00pm





With their unique blend of French, Celtic, and Cajun musical style, Natalie MacMaster and Donnell Leahy are far from ordinary. This season, don't miss the energetic fiddling duo in

## Visions from Cape Breton and Beyond: A Celtic Family Celebration Starring Natalie MacMaster & Donnell Leahy



(March 19, 2015; 7:00pm & March 20, 2015; 7:00pm). Natalie MacMaster has made a name for herself in the music industry, touring with major artists such as Alison Krauss and Paul Simon, while Donnell Leahy amassed an impressive group of devoted fans playing with the eight-piece family band, Leahy. Now the two have come together to form a powerhouse pair of fiddlers with a unique fusion style.

This season also features some of America's most treasured performers. In her debut performance on the Lyric stage, **Darlene Love** will ring in the Christmas season with a little **"Love for the Holidays"** (December 8, 2014; 7:00pm). Perhaps most famous for her #1 single, "He's a Rebel," Darlene Love has dominated the music industry for over 50 years as both a back-up singer and a solo artist. Love recently starred in the Academy

Award-winning film and critically acclaimed documentary *50 Feet from Stardom*, which ran as part of The Lyric's most recent Art Cinema Series. This holiday season, Darlene Love will light up the stage with her soulful renditions of seasonal favorites.

One of the most successful country rock bands in music history, **Pure Prairie League** (March 6, 2015; 7:00pm) will be performing some of their biggest hits on The Lyric stage this season including "Two Lane Highway," "Amie," and "Let Me Love You Tonight." The rock group has performed with a number of major artists in the music industry, including Chet Atkins, Vince Gill, and Emmylou Harris. Credited with having brought country rock to a national music audience in the 1970s, Pure Prairie League has stuck to their roots and continued touring, selling out shows across the country.

Celebrating the **50<sup>th</sup> Anniversary of "Alice's Restaurant,"** beloved singer-songwriter **Arlo Guthrie**

(January 26, 2015; 7:00pm & January 27, 2015; 7:00pm) returns to The Lyric this January for two evenings of folk music and fond memories. This special performance features a brand new program of Guthrie's greatest hits perfect for long-time fans and new listeners alike.

Visions from Cape Breton and Beyond: A Celtic Family Celebration Starring Natalie MacMaster & Donnell Leahy  
Mar. 19<sup>th</sup> & 20<sup>th</sup> 2015 | 7:00pm

## ARLO GUTHRIE ALICE'S RESTAURANT



Arlo Guthrie  
Jan. 26<sup>th</sup> & 27<sup>th</sup> 2015 | 7:00pm

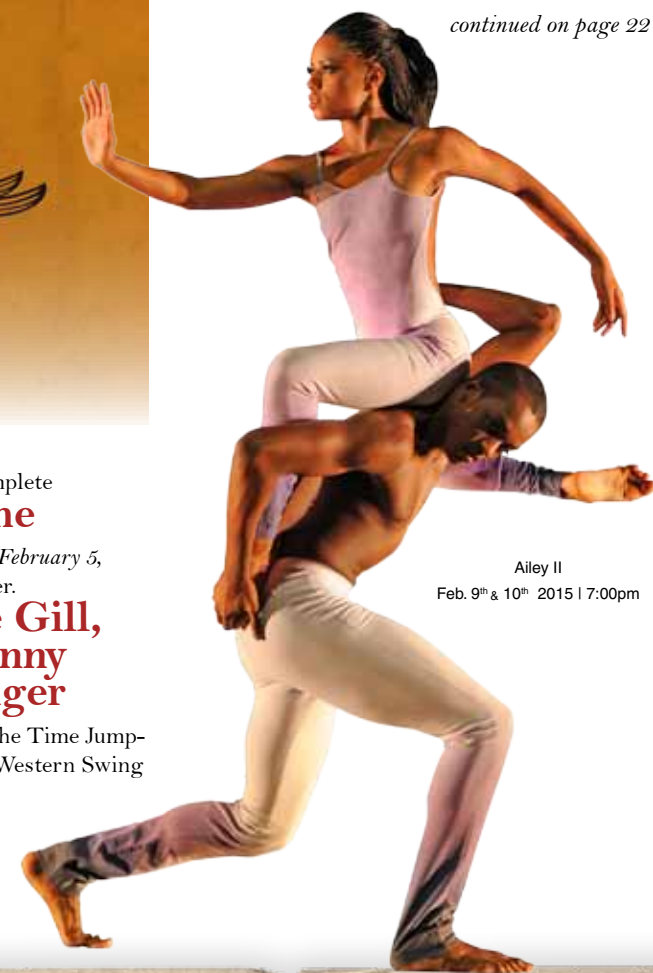
Premiere concert violinist **Anne Akiko Meyers** (January 29, 2015; 7:00pm) will grace The Lyric stage this season, playing on one of the world's most expensive and extraordinary violins. Meyer's instrument, "The Molitor," is believed to have been once owned by Napoleon Bonaparte himself and is valued at over \$3,000,000. A young prodigy, Anne Akiko Meyers debuted with the New York Philharmonic at the age of 12. She continues to amaze audiences around the world with her brilliant interpretations of challenging classical pieces played on her unique and remarkable violin.

This season wouldn't be complete without a little swing and **The Time Jumpers** (February 5, 2015; 7:00pm) are sure to deliver. **Featuring Vince Gill, Dawn Sears, Kenny Sears, and "Ranger Doug" Green,** The Time Jumpers are a Grammy-nominated Western Swing ensemble that started at a local bluegrass club and spread like wildfire. Touring with big name stars from Carrie Underwood to Ray

Price, The Time Jumpers have sold out shows across the nation. This winter, they'll bring their signature brand of swing to The Lyric.

Taking inspiration from the master of movement himself, Alvin Ailey, the **Ailey II** dance company (February 9, 2015; 7:00pm & February 10, 2015; 7:00pm) strives to create community through dance. Celebrated as one of the most popular dance companies in the country, Ailey II represents the next generation of performative dance through their synthesis of traditional and contemporary choreography. Ailey II will be demonstrating their unique vision and expression of the human body this February at The Lyric.

continued on page 22



Ailey II  
Feb. 9<sup>th</sup> & 10<sup>th</sup> 2015 | 7:00pm

## A BRIEF HISTORY OF THE LYRIC THEATRE



**SPRING OF 1913**  
Construction for The "first" Lyric began on Osceola Avenue near Belle Flora and opened for its first performance a year later.

**1917**  
The "first" Lyric was abandoned and moved to a little wooden structure on Osceola Avenue

**MAY 27, 1925**  
Construction of The "new" Lyric Theatre commenced on Flagler Avenue

**MARCH 15, 1926**  
The "new" Lyric Theatre opened to the public with the feature picture "Skinner's Dress Suit"



**NOVEMBER 29, 1930**  
Newly equipped with RCA Photophone sound picture machines, The Lyric Theatre opened with railroad thriller "Danger Lights" (picture with sound)

**1941**  
The Lyric Theatre fell on hard times after the depression and closed its doors. Over the following years, it

was rented out to community groups and was used to present traveling vaudeville shows, news weeklies and movies

**1978**  
The Lyric was purchased by New Life in Christ Church and served as a venue for weekly services





**TICKETS GO ON SALE  
TO MEMBERS ONLY  
TUESDAY, MAY 27<sup>TH</sup>**

# 2014-15 Season!

*Tickets become  
available to  
the public  
September 2<sup>nd</sup>*

									
NOVEMBER 20 <sup>th</sup> & 21 <sup>st</sup>	DECEMBER 1 <sup>st</sup>	DECEMBER 2 <sup>nd</sup>	DECEMBER 8 <sup>th</sup>	DECEMBER 12 <sup>th</sup>	DECEMBER 15 <sup>th</sup> & 16 <sup>th</sup>	JANUARY 6 <sup>th</sup>	JANUARY 7 <sup>th</sup>	JANUARY 9 <sup>th</sup> & 10 <sup>th</sup>	JANUARY 15 <sup>th</sup>
									
JANUARY 17 <sup>th</sup>	JANUARY 23 <sup>rd</sup> & 24 <sup>th</sup>	JANUARY 26 <sup>th</sup> & 27 <sup>th</sup>	JANUARY 29 <sup>th</sup>	JANUARY 30 <sup>th</sup>	FEBRUARY 3 <sup>rd</sup> & 4 <sup>th</sup>	FEBRUARY 5 <sup>th</sup>	FEBRUARY 9 <sup>th</sup> & 10 <sup>th</sup>	FEBRUARY 14 <sup>th</sup>	FEBRUARY 15 <sup>th</sup>
									
FEBRUARY 17 <sup>th</sup> & 18 <sup>th</sup>	FEBRUARY 19 <sup>th</sup>	FEBRUARY 24 <sup>th</sup>	FEBRUARY 27 <sup>th</sup>	MARCH 2 <sup>nd</sup>	MARCH 3 <sup>rd</sup>	MARCH 6 <sup>th</sup>	MARCH 7 <sup>th</sup> & 8 <sup>th</sup>	MARCH 11 <sup>th</sup>	MARCH 16 <sup>th</sup>
						<p><b>To purchase tickets, order online at <a href="http://www.LyricTheatre.com">www.LyricTheatre.com</a> or call The Lyric Theatre Box Office at 772-286-7827</b></p>			
MARCH 19 <sup>th</sup> & 20 <sup>th</sup>	MARCH 22 <sup>nd</sup>	MARCH 24 <sup>th</sup>	MARCH 26 <sup>th</sup>	MARCH 27 <sup>th</sup>					



Our team supports the Lyric Theatre and the Arts



Ask us what we are  
doing differently to sell  
real estate today!



101 East Ocean Blvd., Ste. 102 • Stuart, FL 34994 • 772.494.6999 • sailfishrealty.com



TREASURE COAST DERMATOLOGY

*Specializing in the Treatment of Skin Cancer*

PROTECT  
THE HEALTH OF  
YOUR **SKIN**

with Regular Exams by a Board Certified Dermatologist

**TIM IOANNIDES, MD**

Board Certified by the American Board of Dermatology

**CYNTHIA GOLOMB, MD**

Board Certified by the American Board of Dermatology

448 SE Osceola Street, Stuart, FL 34994

**772.221.3330**

Serving Martin, St. Lucie and Indian River Counties

[www.TCDermatology.com](http://www.TCDermatology.com)



# Take A Seat



Not actual seat!

Seat naming opportunities are now available for all our new orchestra seating.  
So please consider placing your name, or a friend's even, on the arm of one  
of The Lyric's gorgeous new seats for only \$250 and help The Lyric  
complete the Love The Lyric's \$3,000,000 Capital Campaign.

Please contact Linda Prange, Development Director, at 772-220-1942, ext. 209  
or [development@lyrictheatre.com](mailto:development@lyrictheatre.com).

(Seat locations are available on a first come first serve basis.)





Regis Philbin  
Feb. 15<sup>th</sup> 2015 | 4:00pm & 7:00pm

continued from page 17 .....

Keep those toes tapping for Savion Glover, who returns this season for a much-anticipated performance: **Savion Glover's SoLe Sanctuary** (February 24, 2015; 7:00pm). This performance is more than just an exploration of tap. A meditation on the artist's own impressive career, SoLe Sanctuary is a culmination of Glover's personal journey in music and dance. The Tony-award winning tap dancer, choreographer, and producer brings you a night of raw energy and technical innovation as he explores the powerful musical instrument that is the human body on our very own Lyric stage.

And mark your calendars for another unforgettable night with **Regis Philbin** (February 15, 2015; 4:00pm & 7:00pm) this spring. With a sharp suit and a sharper tongue, Regis is most famous for his work on television as host of *Who Wants to be a Millionaire* and *Live with Regis and Kelly*. This season, see a different side of Regis as he takes you through the sounds of the big band era. Regis brings his signature flair to major songs by some of America's greatest crooners, including Frank Sinatra and Dean Martin, singing hits like "Pennies from Heaven" and "You Make Me Feel So Young."

The Lyric is happy to bring back our celebrated **Broadway Series** for a second season, featuring four prize-winning, best-selling shows straight from the heart of New York. The Broadway Series will have you laughing, gasping, and cheering for more with performances of **Men are from Mars Women are From Venus – LIVE** (January 9, 2015; 7:00pm & January 10, 2015; 4:00pm



time with a night of your favorite rhythm and blues classics including hits from the O'Jays, the Temptations, and more. If you missed it last season, you won't want to miss Earl Turner this time around. With a wide variety of performances from the Latin stylings of **Tito Puente, Jr. "A Walk in My Father's Shoes"** (January 17, 2015; 7:00pm) to the intimate and flirtatious **Cirquesco** theater troupe (March 11, 2015; 7:00pm), our Nostalgia Series is perfect for audiences young and old.

Earl Turner's Box of 45's  
Mar. 16<sup>th</sup> 2015 | 7:00pm

& 7:00pm), **Next to Normal** (January 23, 2015; 7:00pm & January 24, 2015; 4:00pm & 7:00pm), **Broadway SHOWSTOPPERS!** (February 3, 2015; 7:00pm & February 4, 2015; 4:00pm & 7:00pm), and **Big River: The Adventures of Huckleberry Finn** (February 17, 2015; 7:00pm & February 18, 2015; 4:00pm & 7:00pm).

The Lyric's **Nostalgia Series** this season is better than ever, expanded to include music and entertainment across the decades and genres. Back by popular demand this year as part of our Nostalgia series is **Earl Turner's Box of 45's** (March 16, 2015; 7:00pm). Sin City's "Male Vocalist of the Year," Earl Turner will bring you back in



**1987**  
With talk of razing the theater, Friends of the Lyric, a group of concerned citizens, banded together to save the historic structure

**MARCH 18, 1988**  
Friends of the Lyric entered into a contract with the New Life in Christ Church and purchased theater

**1993-1995**  
With assistance from community grassroots efforts and grants, The Lyric Theatre underwent much needed repair



from marquee improvements, exterior painting, new roofing and air-conditioning systems, ADA compliance alterations, box office construction, and remodeling of the restrooms and dressing room

**NOVEMBER 12, 1993**  
The Lyric Theatre was listed on the National Register of Historic Places

**1996**  
New seating installed in the orchestra section and administrative offices constructed

**2001**  
The Balcony of the theater was remodeled for the installation of new balcony seating, an elevator was installed and refurbishment of the lobby and restrooms



**2002**  
Lighting and Sound Equipment upgraded

**2004-2005**  
The expansion of the Lyric was commenced and completed, enlarging the stage by 14 feet and equipping The Lyric with a backstage with flex- dressing area, a restroom, and office/storage areas. The "Star" dressing room also underwent renovation to offer a quaint comfortable room with a shower and restroom.



**2014**



ACTING

STUDENT

PERFORMING

LYRIC'S **AWESOME!**

**SUMMER CAMP**

2014

Stage performance

Contact Karin at [karin@lyrictheatre.com](mailto:karin@lyrictheatre.com) or call

**Register Now! 772 220-1942 x205**

DINNER AND A SHOW?

Since 1991 Luna has drawn an eclectic Downtown crowd. With its creative menu of mouth watering entrees, specialty pizzas, and those irresistible garlic knots, Luna knows how to satisfy all appetites and budgets.

Salads • Antipasto • Entrees w/ White, Red & Marsala Sauces  
Baked Casseroles • Gourmet Pizza

**Lunch:** Mon - Sat 11:00-4:00  
**Dinners:** Mon - Thurs 4:00-9:00  
**Fri & Sat:** 4:00-10:00  
**Sundays:** 4:30-9:00

EST. **LUNA** 1991

ITALIAN CUISINE

49 Flagler Avenue, Downtown Stuart  
288-0550 | [www.LunaDowntownStuart.com](http://www.LunaDowntownStuart.com)

"You don't have to venture far beyond the Lyric Theatre's front door to find one of the best Italian-American eateries in all of South Florida."  
**Palm Beach post 2008**

"A Stuart Landmark."  
**The Stuart News 2005**

Italian cooking the old fashioned way from scratch everyday!

LUNA PIZZA

LUNA

READERS CHOICE PLATINUM AWARD GOLDEN FORK AWARD

Your "Fast Pass" to Great Seats

Love

The LYRIC

and Become a Member Today

for as little as \$35!

For more informatiion, call Heather Long at 772.220.1942 ext. 204,

email [Membership@LyricTheatre.com](mailto:Membership@LyricTheatre.com) or visit [www.LyricTheatre.com](http://www.LyricTheatre.com)

2013-14 Volunteers

bartenders

Zack Bausch  
Judy Cialone  
Polly Chrisholm

Ron Colangelo  
Barbara Connell  
Leslie Cuatt

Jim Egan  
Kathy Grant  
Kevin Grant  
Maribeth Konz

Rob Lockhart  
Diane Meislohn  
Bertha Perez  
Bea Radliff

Barbara Thomms  
Pat Westbrook  
Reva Zemke

ushers

Pamela Alverson  
Mary Pat Anderson  
Sharon Anderson  
Frank Anfuso  
Barbara Assalone  
Jean Aukerman  
Michael Bennett  
Norma Berry  
Lorraine Blatt  
Rita Borucki  
Camille Bowers  
Tom Britton  
Patti Brown  
Monika Bush  
Anita Canali  
Michael Chenier  
Joan Clark

Janet Cooley  
Aleta Crabtree  
Nancy Cunningham  
Dorothy DeFino  
Jean DeFrancis  
Kendra Deltano  
Bobbie Demers  
Linnea Desmond  
Sheila Dixon  
Joan Elliot  
Judy Endresen-Worth  
Jerry Felton  
Elizabeth Fettes  
Bobbie Forman  
Dana Forman  
Traffon Foster  
Ranelle Furniss

Susan Fusco  
Maureen Gallagher  
Mary Ann Galletta  
Jean Garneau  
Mary Helen Garner  
Barbara Grass  
Lauran Griffith  
Joan Gross  
Howard Hall  
Maureen Hanahan  
Betty Hanneman  
Elaine Harris  
Barbara Hatfield  
Elaine Herman  
Marianne Hickey  
Renee Hill  
Helen Hilly

Linda Hirvonen  
Ruth Holman  
Susan Indilicato  
Sally Jackson  
Ronald Jacobstein  
Gayle Kochan  
Kathy Koivula  
Raju Kottiath  
Edna Kulla  
Mary Lamalie  
Heather Lamond  
Rusty Landgren  
Lorete Lavoie  
Pat Lawler  
Irene Luneski  
Pam MacCormack  
Patti McFadden

Pauline McHugh  
Phil McHugh  
Paul Minnicozzi  
Mary Moody  
Virginia Moore  
Ronald Nelson  
John O'Dea  
Pat Pendergast  
Frances Rago  
Joyce Reed  
Marjory Reid  
Diane Riesgraf  
Marcy Roeder  
Donna Rollins  
Claire Ronan  
Rita Rooker  
Eileen Rublowsky.

Stanley Rublowsky  
Sue Ann Saleeby  
Pete Seif  
Marilyn Sihler  
Kay Snelson  
Marion Stahle  
Gladys Stevenson  
Marilyn Summers  
Martha Terrenzi  
Pauline Voeller  
Stephen Wiesenfeld  
Maria Willmarth  
Chris Wright  
Janice Wright

THESE VOLUNTEERS, AS WELL AS A CAST OF HUNDREDS WHO ARE TOO NUMEROUS TO MENTION HERE, PROVIDE INVALUABLE ASSISTANCE THROUGHOUT THE SEASON. IF YOU ARE INTERESTED IN VOLUNTEERING, PLEASE CONTACT [INFO@LYRICTHEATRE.COM](mailto:INFO@LYRICTHEATRE.COM)

24

For tickets and information, call The Lyric Theatre Box Office at 772-286-7827 or visit [www.LyricTheatre.com](http://www.LyricTheatre.com). All shows and times are subject to change.

The Friends of the Lyric, Inc. is a 501(c)(3) not-for-profit organization

[www.LyricTheatre.com](http://www.LyricTheatre.com)

25



# 2013-14 Contributors

Thank you to all those generous contributors who have donated \$100 or more to The Lyric Theatre as of April 1, 2014. If we have inadvertently overlooked your name in this listing, please accept our sincere apology and notify our Development Director at 772.220.1942, extension 209.

## Director’s Circle

*The following donors have generously committed to providing sustained support of The Lyric over a five-year period as part of the Director’s Circle program:*

Butch & Jan Bayley	Robert H. Fier, MD	Stacey Levy	Randy & Linda Prange
Judy Berkes	Jack Fink	Sharon & Greg Lewis	Douglas & Carol Rearick
Bernie & Starr Boniface	Stephanie Flicker &	Mr. & Mrs. H.W. Lichtenberger	Ms. Jacquelyne Schuman
Bob Burson	Peter Freudenberg	The Lichtenberger Foundation	Janet & Charles Seidler
Frank M. Byers Jr.	Jean Friend	Ed & Jacqui Lippisch	Paul Shirley
Vince & Sharyn Cerniglia	Paul & Annette Gartzman	Frank Loesser Enterprises	Patricia Simmons
Ethel & Jack Christin	Eileen Morris & Bob Griffin	John & Laura Loesser	Mr. & Mrs. Vincent A. Smyth
Ann Corwell	Dave & Vicki Grove	Susan Loesser	Carol C. Spera
Jan & Bob Crandall	George & Marianne Hartnett	Natalie J. MacDonald	Douglass & Patricia Stewart
Dr. & Mrs. William Crook	Mrs. Elizabeth Herold	Carol & Jack McCarthy	Swann Family -
Mr. & Mrs. Casey Cummings	The Herold Family	Steve & Julianne McGovern	Steven, Daryl, Cody & Ky
Michael & Diane Dadko	Hope G. Jochem	Edward & Joan McGowan	Frank & Judith Tidikis
Peter D. and Julie Fisher	Joseph C. Kempe, PA	Frank & Lore Metzger	Clayton & Anna Timmons
Cummings Family Foundation	Mr. & Mrs. Knight Kiplinger	Steven Munn	Barbara B. Trimble
Lindy Donigan &	The Kiplinger Foundation	Judy Nelson	United States Sugar Corporation
Deane MacMillan	Mr. & Mrs. Keith Kopp	Oculina Bank	Mr. & Mrs. Charles Walgreen III
Lauri J. Goldstein-Scher	Elisabeth Lahti	Dorothy Ohlbach	Nancy & Yung Wong
& Dr. Elliott Scher	Lesser, Lesser, Landy	George J. Pappas	Sam & Shirley Zemsky
Lee & Gaby Elsey	& Smith PLLC	& Bonnie K. Barker	Mr. & Mrs. John Ziegler

### Diamond Patron (\$5,000 & Up)

Robert P. Bauman  
Mr. & Mrs. Albert Cardinali  
Dubose & Dorothy Heyward  
Memorial Fund  
Dana & Kathy de Windt  
Milton Fine  
Mort & Brigitte Harris  
Gen. & Mrs. Gerald Hart  
Ray & Peg Hirvonen Foundation  
Mr. & Mrs. Jerry Rappaport  
Kenan & Betsy Siegel  
Robert & Carol Weissman  
Ed & Willie Welter

### Gold Patron (\$1,000 & Up)

Jules Armellini  
The Armellini Family Foundation  
Peter Avonda  
Paramount Wealth Management  
of Raymond James  
Emil & Shirley Baer  
Joseph & Chan Bank  
Suzanne M. Beers  
Camille Bowers  
Robert Boyhan  
John & Margaret Ann Brutvan  
Elaine Buff  
Thomas & Polly Campenni  
Jeff & Mary Christopher  
Mr. & Mrs. Howard T. Cook  
Tim & Maureen Cotter  
Mr. & Mrs. Albert M. Covelli  
Albert M. Covelli Foundation  
Mr. & Mrs. William Crandall  
Crandall Family Fund  
Eric & Jeanne Crawford  
Sharyon Daigneau  
Pat Deerin  
Michael & Nancy Del Priore  
Patty Downing  
Joan & Bob Fisher  
Russell Attridge & Barbara Flowers  
Kia Fontaine  
Allen & Nancy Forbes  
Dr. Helen Franke  
Wayne & Debra Frehofer

Barry & Merle Ginsburg  
Dr. & Mrs. Ronald Grober  
John & Sara Hazelton  
Gary Hendry  
TentLogix  
Edward P. & Juanita J. Henson  
Foundation  
Richard & JoAnn Hinckley  
Jim & Jan Hogan  
Mr. & Mrs. James Jacobs  
Madeline & James A. Jacobs  
Philanthropic Fund  
Franklin Cole & Judith Nightingale  
Anthony & Suzanne Kissling  
Abby Koffler  
Mr. & Mrs. Fred Kopf  
The Kopf Family Charitable Fund  
Michael & Lois Lazarus  
John & Linda Loewenberg  
Mr. James LoPrete  
Louis and Nellie Sieg Fund  
Bob & Raif Massey  
Caroline Metzger  
John & Nancy McCoy  
Mr. & Mrs. James F. Orr III  
Kevin Peterson  
Mr. & Mrs. Bill Philipbar  
John Wilson &  
Margaret Richebourg  
Karen Rodgers  
Bill & Rita Rolo  
Gerry Saelzer  
Saelzer/Atlas Wealth Management  
Group Raymond James  
Chuck & Rachel Scott  
Mr. & Mrs. Earl Smith  
Susi & Bud Sterling  
Ray & Eilyn Stevenson Fund  
Mr. & Mrs. Charles Sumner  
Transparent Audio  
William & Carol Tell  
Richard & Lucy Thomas  
Mrs. Ina Tornberg  
Ron & Jo Vent  
John & Carol La Re Wagner  
Jeff Weber  
Comerica Bank  
James & Magalen Webert  
Linda Weiksnar  
Nancy Wertheim  
Donna Woldahl  
Gloria Wolfe  
Jim & Ann Young  
Richard & Nancy Zappala

Walt Zeigler  
Mr. & Mrs. Paul Zimmerman

### Silver Patron (\$500 & Up)

Carol Gesser & Dr. Anis Akrawi  
Mr. & Mrs. Anthony Amanti  
Patricia Arney  
Bank of America  
Mr. & Mrs. William Baxter  
Thomas C. Beddows  
Beddows Commodities, Inc.  
Ed & Denise Belizar  
Ralph & Christine Brown  
Anita Ross Canali  
Mr. & Mrs. Charles C. Carella  
Daisy Carter  
Carole & Paul Cole  
Robert Stengel & Valerie Crane  
James E. Culbert  
Donald & Gail Curtis  
Joe & Vicki Davis  
Harland & Carolyn Dolamore  
Ed & Robin Donner  
John & Karen Edds  
Ralph & Sylvia Evans  
Carl & Sirkka Firley  
Mr. & Mrs. Lester E. Frankenthal  
Donna L. Friedman  
Tower Consultants, Ltd  
Jim & Sally Friend  
Todd & Margaret Gibbs  
Julie Gibson  
Cindy & Michael Goldberg  
Sam & Diane Greenawalt  
Thomas C. Hartzog  
Diane Haskett  
Mr. & Mrs. Tom Hawken  
Stuart Web Inc.  
Robert & Patricia Hendrickson  
Mary & Richard Holleman  
Judy & Steve Horgan  
Wayne & Paula Hundt  
Earl & Jonette Kidd  
Lon & Audrey Kight  
Mr. & Mrs. Keith W. Klarin  
Mr. & Mrs. Jules Knapp  
Dottie Kohl  
Kathy LaBar  
Treasure Coast Harley Davidson  
Todd & Margaret Laycock  
LifeReloaded Speciality Publishing LLC

Lolita Lindstrom  
Andrea Lutz  
Charles McCormick,Jr.  
John & Nancy McCoy  
Char and Jack Meyering  
L.J. & Susan Miller  
Susan & Scott Miller  
C. Theodore Murphy  
Mr. & Mrs. Joseph Nazare  
Mr. & Mrs. Ron Ognar  
Dr. & Mrs. Edward M. Overfield  
Anne Parsons  
Pat Pendergast  
Rick Perez  
Gary & Joan Pyne  
Robert & Carol Rozzi  
Jeff & Sue Teach  
Ted & Pat Tiemeyer  
Jerome & Carol Trautschold, Jr.  
Wipeout Pests & Termites  
Karen & Joseph Vessely  
Tom & Vicki Wackeen

### Patron (\$100 & Up)

John & Kathryn Adamiak  
Dr. Karl Drehobl & Amy Alpert  
Lynda K. Alexander  
Dr. & Mrs. Albert Altongy  
Chet & Lee Amond  
Constance C. Anderson  
Howard & Sandra Anderson  
Sharon Anderson  
Frances B. Andre  
Jo Ellen Andrews  
Frank Anfuso  
Mr. & Mrs. Beryl Anthony  
Frank R. Antonucci  
Bob & Barb Apley  
Tony & Deborah Armentano  
Patrick & Nicole Armstrong  
Bonnie Arrington  
Ann B. Avallone  
Robert W. Bailey  
Joanne C. Baker  
Ginger Baldwin  
John Moffitt & Priscilla Baldwin  
Renee & Joel Barkan  
John & Rosilynn Barone  
Gerry & Mary Anne Bartfield  
Susan & Jules Bauduc  
Mitch & Lynn Baumeister

Richard & Eva Baumgart  
Lisa Bebout  
Theresa Beditz  
Barbara Begleiter  
Mr. & Mrs. Walter S. Bell  
Michael A. Benigno  
Ralph Bennett  
Richard & Myrna Bennett  
Roger & Margaret Bernot  
Dr. & Mrs. Charles Berwitz  
Mr. & Mrs. Louis V. Bevier  
Malcolm Beyer Jr.  
Linda Bisbee  
Mr. & Mrs. Terry Bischoff  
Robert A. Bishop  
Dr. & Mrs. Richard Blagbrough  
David Bourbeau  
Mary Ann & Robert Bowie  
Joan Boyce  
Jack & Dodie Boyle  
Albert & Lucia Bozzelli  
R. W. & D. A. Bradshaw  
Gail & Wally Brady  
Mr. & Mrs. Michael Braid  
Downtown Apartment  
Management LLC  
Robert Brands  
Sarah & Tom Brendal  
Arlene & Alfred Bressaw  
Anne & Philip Brett  
Arthur & Katharin Brink  
Gary Brookins  
Bonnie Brown  
Dan & Nancy Brown  
Ed & Barbara Brown  
James T. Brown Jr.  
John & Diane Brown  
Samuel A. Bruning  
Iris Burckhardt  
Bill Burckhard  
Anne Burford  
Paul & Shannon Burke  
Cliff Burkhardt  
Elizabeth Burton  
David Bye  
Mr. & Mrs. Robert M. Bysshe  
Maureen Cahill  
Jim & Carolyn Caiola  
Dr. Robert Calderin  
Ken & Nancy Caldwell  
James Cammack  
Cheryl & Rob Campbell  
Murdoch & Deborah Campbell

Teresa Campbell  
Richmond & Peggy Campion  
Mr. & Mrs. Daniel Capper  
Francis & Esta Carelli  
Dr. & Mrs. Michael F. Carelli  
Kay & Tom Carnes  
Carolyn Carrano  
Keith & Lauren Carroll  
Michael Carvalho  
Mr. & Mrs. Jack Cavari  
Robert & Janice Cervený  
Jeanne Chapline  
Amy Chappel  
Craig & Patricia Chindemi  
Leo & Dolores Clancy  
Karen Clark  
Mr. & Mrs.Tom Coash  
Robert & Mendy Coker  
Ron & Joan Colangelo  
Sarah Coleman  
David & Cynthia Collier  
Fred L. Comfort  
Dorothy Conant  
John Connell  
Janet Coppoletta  
Gary & Jan Coton  
Mr. & Mrs. Noel Couture  
Rob Cramer  
Robert Stengel & Valerie Crane  
Robert Crowder  
Mr. & Mrs. Louis Cucci  
Dr. James E. Culbert  
Marie Culbreth  
Donald & Gail Curtis  
Paul & Linda Daly  
Mr. & Mrs. Joseph D’Andea  
Ronald Daugherty  
Stephen Davenport  
Stan & Nancy Davis  
Marianne Dee  
Michael DeFontes  
Mr. & Mrs. Paul V. De Luca  
Mr. & Mrs. Edward Demarest  
Mr. & Mrs. Gerard DeMont  
Earl & Ann Dempsey  
Dr. & Mrs. Keith de Windt  
Perry Diamond  
Richard Dilts  
John J. Dixon  
Dr. Edith M. Donohue  
Aliene Donovan  
Elaine & David Doran  
Alan Dorfman  
Mr. & Mrs. Andrew Doyle  
Betsey Doyle  
Mr. & Mrs. Bruce Doyle  
Donald & Diana Doyle  
Jay Dubin  
Brian & Mary Dugan  
Mark & Debra Duvall  
Elizabeth Dymowski  
Cynthia & Bill Eaton  
Michele Edwards  
Faith T. Edwin  
David & Anne K. Elliot  
Mary Jane Ely  
Mr. & Mrs. Richard Enright  
Albert Evans  
Mark Fairchild  
Sandra Fehrbach  
Carlene & Renee Fetcho  
John Fiadini  
Donald & Elizabeth Fine  
Richard & Emily Fineburg  
Mr. & Mrs. Alan H. Finegold  
Mr. & Mrs. Robert Fisher  
Mr. & Mrs. Robert P. Fisher Jr.  
Elizabeth Fitzsimmons  
Mrs. Lucette Flanagan  
Bill & Melanie Flanagan  
Brian & Phyllis Foley  
Robert & Paula Follweiler  
Louis Forino  
George Forese  
Robert & Ann Fortunato  
Mr. & Mrs. Richard Foster  
Caterpillar Foundation  
Ron Frank  
Steve & Lynn Frank  
Melissa Fricke  
Stephen & Aida Fry  
Janie Fuller  
Jerry Fuller  
Susan F. Fullerton  
Dr. & Mrs. Milton Gallant  
Paul & Irene Garfinkle  
Mr. & Mrs. John Garofalo  
Mary & Brian Geary  
Jo & Jeffery Gillman  
Steven Gladstone  
Charles & Robbin Glover

Elaine Goddard  
Anne & Frank Goldstein  
John & Kathy Gonzalez  
Kathleen & George Goodwin  
Mr. & Mrs. David Gordon  
Carol A. Goulding  
Mr. & Mrs. Robert Grabowski  
Flamingo Pools & Patios Inc.  
Henry & Rachelle Grady  
David Graf  
Lois & Hadar D. Granader  
Robert & Mary Graves  
Judith Greenstein  
Howard K. Gregory  
Nunzio & Dorothy Grella  
Jo Griffith  
Peter & Gayle Grimm  
Barbara Grimmer  
John Grimmer  
Mrs. Nina Griswold  
Marilyn Grossman  
Anthony Gunn  
Rita Guzinski  
John & Kathryn Haines  
Christopher Hallberg  
Gary & Jan Hamby  
Rev. Allardyce A. Hamill  
Bill & Jo Hamilton  
Edith & Herb Hanke  
Ron & Lyn Hanlon  
Mr. & Mrs. William Hardin  
Craig & Linda Harlan  
Phylis Harrison  
Pat Hatch  
Mr. & Mrs. James Henderson  
Thomas Henghold  
Mrs. Robin G. Henn  
Patrick & Mary Hennessy  
Cynthia F. Herbst  
Alex F. Hernandez  
Kathryn McHale & David Heron  
Mr. & Mrs. Allen Herskowitz  
Wade Hersperger, Jr.  
Mr. & Mrs. Donald Hesch  
Mr. & Mrs. Werner Hilpert  
Doug P. Hine  
Jeff Hines  
Thomas & Sandra Hirsch  
Bohdan Hodiak  
Nancy Hogle  
Rich & Teresa Hohman  
Madelyn & Tom Holder  
Tommy Holder  
Mrs. Dana Hole  
Kay B. Holtz  
Ida Hood  
Darla R. Horn  
Jim & Suzanne Horstman  
David & Judy Hubert  
Ethel & Wynnie Hubler  
Judy Hudgens  
D. S. Hudson, Jr.  
Helen Huff  
Mr. & Mrs. Carlton Hughes  
Ronald Ingles  
Mary Jane Inman  
Lynn E. Irvin  
Vincent Iuliano  
Frances Jackson  
Dr. & Mrs. G. Keefe Jackson  
Karen & Lars Janson  
Melissa P. Jegers  
Bob & Sarah Johnson  
Lynn & Bud Johnson  
Sandra L. Johnson  
Ben Jones  
Marion Jones  
Michael & Karen Jordan  
Bill & Ruth Jose  
Dr. Marie G. Jureit-Beamish  
Leslie Kaler  
Mr. & Mrs. Paul Karp  
Elaine Katz  
Rick & Sharon Kazdin  
Mr. & Mrs. Joseph L. Kelley  
Caron P. Kelly  
Caron Kelly Interiors  
Ned & Joyce Kenna  
Mrs. Doris Kesler  
Arnie & Charlotte Kihlmire  
Timothy Kinane  
Craig W. Kinne  
Randall J. Klaker  
Tammy Klein  
Ron Klemencic  
Mr. & Mrs. Robert Kloppenborg  
James & Laurel Knoska  
Patricia L. Koester  
Einer Konggaard  
John Kostung  
Mr. & Mrs. Philip Kron

Christina Kruszewski  
Mr. & Mrs. John Kucyk  
Col. & Mrs. Nicholas Kuzemka  
Regina Kyle  
Charles A. LaForge Jr.  
Jeanne Lambdin  
Barbara LaMirand  
Oliveann Lancy  
Bob Lang  
Richard & Rose Langbert  
Jefferson Lankford  
Ruth Lawrence  
Robert & Linda Lecky  
Jean E. Lee  
Mr. & Mrs. Frank Lee Jr.  
Mr. & Mrs. Karl Lehtola  
Joseph & Willda Leinbach  
Joann Leonne  
Robert Levin  
Mr. & Mrs. Melvin Levy  
J.D. Lewis III  
Nancy Lindsay  
Donna Linton  
Barbara Lisman  
Jim & Molly Little  
Rosemary C. Lizars  
Roger Loeffelbein  
Mr. & Mrs. Henry V. Logan  
Richard & Phyllis Lojewski  
Jeffery & Heather Long Jr.  
William & Pam Long  
Wendy Lucas  
Irene Luneski  
Sandi P. Lyman  
Roger Lyon  
Kenneth & Joan Macgillivray  
Gertrude & William MacIntyre  
George & Joan MacLean  
John E. Maddie  
Paul & Doris Magnuson  
Benjamin Magrill  
Robert & Myra Maisano  
Mrs. Elizabeth H. Mallonee  
Terry Malone  
Steve & Maria Mamangakis  
Mr. & Mrs. Nicholas Mans  
Joan Maran  
Erik & Candy Martin  
Mr. & Mrs. Raymond Martino  
Elinor Mastroff  
Mrs. Lee Mathews  
Elaine & Jim Matts III  
Mr. & Mrs. Wayne Maxson  
Teresa McCall  
Robert McCloskey  
Patsy & Don McCree  
Francis & Betty Ann McDonald  
Diane 'Miki' McDowell  
Gloria McHardy  
Jerry & Maureen McIntee  
Jayne & Edward McMellen  
Barbara McNamara  
Diane & Clyde McNeal  
Gerald Mehlich  
Mr. & Mrs. Peter Meier  
John Mellaci  
Shari & Michael Meltzer  
Don Metz  
Mr. & Mrs. Edward Metzler  
Carmel Miele  
Paul & Pat Mielke  
Lawrence Miller  
Michael & Lyndia Miller  
Jacqueline Millstone  
Dave & Mary Milmore  
Jerry & Betty Miloscia  
Peter Mischung  
Betty Mitchell  
Ivar Mitchell  
Paul & Clara Monaco  
Mr. & Mrs. Vincent Moran  
Elaine Morgan  
David & Marilyn Morris  
Susan Morris  
Sheldon & Lisa Moss  
Alice & Allan Mostoff  
Patricia Mulligan  
Ted & Sally Murphy  
Terry & Patricia Murphy  
Mrs. Constance A. Nast  
Karen Muller & Ronald Nathan  
Carol Timmons & Regina Negri  
Rosalind Neilen  
Cynthia Netwig  
Barbara Nevils  
John & Elizabeth Newcomb  
Carol D. Newton  
Gregory N. Newton  
Dr. & Mrs. Domingo Ngo  
Mrs.Vianne Nichols  
Jack & Peggy Nolan

Ellen Noneman  
Peter J. Norris  
Mr. & Mrs. Robert Nowikowski  
Marianne & Hugh O’Boyle  
John L. O’Brien  
Gulfstream Aluminum  
& Shutter Corp.  
Paul & Susan O’Brien  
George & Rigmor Olesen  
Al & Pat Olofsson  
Clifton & Barbara Olson  
Tony & Rose Oteri  
Alice Owen  
Robert & Inge Owens  
Terry Owens  
Ken & Janet Ozier  
Joseph & Margaret Palella  
A.K. Palmer  
Marjorie Parmenter  
Paul & Jean Pascarelli  
Mr. & Mrs. Vincent Pasquale  
Elliot & Sheryl Paul  
Elliot Paul & Company  
Elaine Pearson  
Claudette A. Pelletier  
Mrs. Pat Pendergast  
Mr. & Mrs. Roy Perraino  
Grey & Trina Perna  
Gene & Rilla Pfothenauer  
Linda L. Planty  
John Plavan  
Dr. & Mrs. Robert L. Polakow  
Gail & Leonard Polanski  
Jackie & David Polge  
Richard & Angie D. Pontynen  
Doug & Kathleen Powell  
Tara Powers  
Tracy & Theresa Pressner  
Sylvia Presto  
Paul & Elaine Puzzo  
Mr. & Mrs. William Randall  
Jean Rappaport  
Dr. & Mrs. Michael Raskin  
Alan L. Reed  
Joyce A. Reed  
Robert Renna  
Pattie & Charlie Restaino  
Joette & Terry Rice  
Carl Ritchey  
Mrs. Susan E. Ritchie  
Bill’s B.S. Inc.  
Jon & Judy Robb  
Mark E. Robitaille  
Barbara Roetzel  
Dr. & Mrs. Harry Rohrer  
Dannel & Suzi Romanik  
Stephanie & Bert Rosa  
Lee & Sally Dadko Rose  
Lloyd Ross  
Richard & Yvonne Ross  
Christine & David Rosso  
Anne Roth  
Mr. & Mrs. Vincent Rotondo  
Robert A. Rotundo  
Charles & Elizabeth Rowbotham  
Charles L. Rucquoi  
Helen Rudtke  
Daniel Ruiz  
James A. Ryan  
Dave O. Sabre  
Edward Saltzman  
Sally Batz & Henley Sandidge  
Robert Sanford  
Mrs. Judith L. Santiago  
Donald & Leigh Savoy  
Joan Sayers  
Daniel Sayre  
Mrs. Helen Scelba  
Diane & Michael Schachter  
Susan Schieren  
Mr. & Mrs. Robert Schifffenhaus  
Peter & Susan Schlapkohl  
Anne-Marie Schmid  
James Schneider  
Dr. & Mrs. Steven Schnell  
Wayne & Patricia Schrader  
Dannel & Suzi Schwartz  
Rabbi Jason & Robin Schwartz  
Charles D. Scott  
Charles & Dorothy Searle  
John & Helen Sebold  
Evelyn & Bernard Sensale  
Michael & Denise Sessions  
Louis Sewell  
Mark Shaber  
Mr. & Mrs. Gregory M. Shapiro  
Roger Shephard &  
Sandra Krenn-Shephard  
Richard & Julie Shelby  
Mrs. Carolyn Sherin  
Frederick Shilling

Al & Dottie Shine  
Mr. & Mrs. Lawrence G. Shrout  
Marjorie Shuda  
Jeannie Silvester  
Arlene Simms  
Fred & Marilyn Simon  
Mr. & Mrs. William A. Slat  
Sara B. Sloan  
Ellen & Joseph Smith  
Joan & Reed Smith  
Deena & Daniel Sokoloff  
Duane G. Sonneborne Jr.  
Jim Sopko  
Joyce Stalhut  
Patrick & Lisa Standing  
Richard Starita  
Naomi Stark  
Mrs. Lou Stern  
George & Betsy Stewart  
James C. Stewart  
Susan & Frank Stifelman  
Barbara Stoner  
Jennifer Strube  
Stuart/Martin County  
Chamber of Commerce  
Mr. & Mrs. David Stuart  
Tri Studiale  
Rod W. Sturm  
Michael & Sue Stutzke  
Julie Gasbarri & Kevin Sullivan  
Arvid & Emily Sundquist  
Mr. & Mrs. Edward Sutton  
Amy Swenson  
James W. Swistock  
Davies & Gayle Tainter  
Mr. & Mrs. Kenneth Takacs  
Richard Talbot  
Mark Tarvin  
Mr. & Mrs. Frank Tasco  
Herb & Marge Taylor  
Nancyann Taylor  
Larry Tefft  
Jean & Bob Terhune  
Deborah Textor  
Morton G. Thalhimer Jr.  
Bradley & Mildred Thayer  
Tom & Sandy Thurlow  
Ted & Pat Tiemeyer  
Paul & Carol Tierney  
Harry Tietjen  
Lavaughn Tilton  
Julie Timares  
Frederick H. Tingberg  
Mr. & Mrs. Gordon Toney  
Tri County Golf Cars  
Joseph Topper  
Patricia Towers  
Karen Townsend  
Mr. & Mrs. Joseph Trotta  
Ellen & Kenneth Tully  
Nancy Ullano  
Peter Upton  
Ellen Vadney  
Frank & Julia Valente  
Ann Valentino  
Mr. & Mrs. John Valentino  
Mr. & Mrs. Robert E. Valle  
Gene & Judy VanCuren  
Mr. & Mrs. Joseph Vannucci  
Nicki Van Vonn  
Joe & Karen Vessely  
Michael & Anne Vinyon  
Betty Volkwein  
William & Patricia Wahl  
Sandra Walker  
Jerome A. Wallenquest  
Barbara Warner  
Harvey & Lois Watson  
Chris & Dona Waynt  
Jeff Weber  
Marvin Weiner  
Linda Rodney &  
Marc Weinstein  
Frank & Peggy Weis  
Susan R. Wertheim  
Louise Wheeler  
Richard & Beverly Whittington  
Dr. & Mrs. George Whittle  
Mr. & Mrs. Lloyd Wieser  
Jim & Jan Wilds  
Gary Williams  
Dale A. Wilson  
Bill & Marnee Wirth  
Audrey Wolf  
Claire Woolley  
Mr. & Mrs. Stuart C. Wright  
Marge & Bob Wroble  
Rick & Cathy Yost  
Richard W. Young  
Michael Zanakis  
Mr. & Mrs. John C. Zimmerman



# Theatre Box Office and General Information

### Hours

Regular Box Office hours are Monday thru Saturday from 10:00 a.m. to 4:00 p.m. We are also open two (2) hours prior to curtain on the day of a performance.

### Purchasing Flexibility

For your convenience, you can purchase tickets in several different ways:

- In person at the Box Office
- By phone at 772-286-7827
- Online 24/7 at [www.lyrictheatre.com](http://www.lyrictheatre.com)
- By mail to: Lyric Theatre, 59 SW Flagler Ave., Stuart, FL 34994

Attn: Box Office

Please be advised that a \$3.00 restoration fee is added to all ticket prices. This supports the preservation and restoration of our historic facility. The Lyric Theatre is listed on the National Register of Historic Places.

### Will Call

Prepaid tickets are available beginning one hour prior to each performance at The Lyric's Will Call Booth in the theater lobby, not at the Box Office. Simply go to the old fashioned ticket booth in the center of the lobby prior to the performance to pick up your tickets.

Paid tickets can also be picked up in advance at any time the Box Office is open, or they can be mailed to you upon your request if there is ample time to do so prior to the performance date.

### Gift Certificates

Gift certificates can be purchased in any denomination and are good for any performance held at The Lyric Theatre. They are valid for one year from the date of the purchase. Gift certificates are not transferable, and

can only be redeemed by the person(s) for whom they are purchased. They are non-refundable and cannot be redeemed for cash.

### Ticketing Policies

The Lyric Theatre has a "No Refund, No Exchange" ticketing policy. At the discretion of management, exceptions may be made. In the event of a returned check, a fee of \$35 will apply.

### Box Office

Located outside the entrance to The Lyric on Flagler Avenue. We accept American Express, Visa, Discover and MasterCard for phone and online reservations; checks, cash and credit cards at the window. All reserved tickets are available from time of purchase up to one hour before the performance, when they may be picked up at our Will Call Booth in the center of the lobby.

### Photography/Recording

The use of any audio or visual recording device is strictly prohibited. Patrons may be asked to leave the Theater.

### Cell Phones/Pagers

Please turn off or put personal communication devices on silent mode prior to entering the Theater.

### Patrons with Disabilities

Special seating arrangements must be made with the Box Office at the time you purchase tickets, based on availability. Inner lobby restrooms are accessible.

### Latecomers

Performances begin at the advertised time. Please allow proper time for parking and collection of tickets. Latecomers will be seated at the discretion of management.

### Fire Notice

In case of fire, please walk to the exit nearest your seat.

### First Aid

Please see the House Manager.

### Smoking

Smoking is prohibited anywhere inside the Theater.

### Beverage Service

A full service cash bar is available in the lobby at most events.

### Restrooms

Located to the left and right of the Will Call Booth in the center of the lobby.

### Lost and Found

Contact the Box Office at 772-286-7827.

### Group Sales & Corporate Discounts

Discounts are available for groups and corporations of all sizes. Please contact the Box Office at 772-286-7827 or [LyricBoxOffice@LyricTheatre.com](mailto:LyricBoxOffice@LyricTheatre.com) for more details.

### Customer Service

If you have a suggestion or problem, please contact the Assistant Executive Director at 772-220-1942, ext. 207.

### Theater Etiquette

As a courtesy to the performers and other audience members, please do not leave your seat until the end of the act. If for some reason you must leave, please wait for a pause in the program.



## Experience Inspires Trust

Providing guidance with Insurance for Estate Planning

- Wealth Replacement Strategies • 401K Rollovers and Retirement Income Planning

For Estates over two million dollars:

- Receive complimentary second opinion on your wealth replacement strategy and risk/reward portfolio analysis
- Receive a complimentary copy of "Who's sitting on your Nest Egg?" by Robin Davis

*Now is the time to meet with one of our associates and put our knowledge to work for you! Call for a complimentary consultation*

## Seating Chart

### STAGE

7 5 3 1	AA	111 110 109 108 107 106 105 104 103 102 101	AA	2 4 6 8
9 7 5 3 1	BB	111 110 109 108 107 106 105 104 103 102 101	BB	2 4 6 8 10
9 7 5 3 1	CC	111 110 109 108 107 106 105 104 103 102 101	CC	2 4 6 8 10
11 9 7 5 3 1	DD	111 110 109 108 107 106 105 104 103 102 101	DD	2 4 6 8 10 12
13 11 9 7 5 3 1	EE	111 110 109 108 107 106 105 104 103 102 101	EE	2 4 6 8 10 12 14
13 11 9 7 5 3 1	FF	111 110 109 108 107 106 105 104 103 102 101	FF	2 4 6 8 10 12 14
13 11 9 7 5 3 1	GG	111 110 109 108 107 106 105 104 103 102 101	GG	2 4 6 8 10 12 14
13 11 9 7 5 3 1	HH	111 110 109 108 107 106 105 104 103 102 101	HH	2 4 6 8 10 12 14
13 11 9 7 5 3 1	JJ	111 110 109 108 107 106 105 104 103 102 101	JJ	2 4 6 8 10 12 14
13 11 9 7 5 3 1	KK	111 110 109 108 107 106 105 104 103 102 101	KK	2 4 6 8 10 12 14
13 11 9 7 5 3 1	LL	111 110 107 106 105 104 103 102 101	LL	2 4 6 8 10 12 14
13 11 9 7 5 3 1	MM		MM	2 4 6 8 10 12 14
13 11 9 7 5 3 1	A	112 111 110 109 108 107 106 105 104 103 102 101	A	2 4 6 8 10 12 14
15 13 11 9 7 5 3 1	B	112 111 110 109 108 107 106 105 104 103 102 101	B	2 4 6 8 10 12 14 16
19 17 15 13 11 9 7 5 3 1	C	112 111 110 109 108 107 106 105 104 103 102 101	C	2 4 6 8 10 12 14 16 18 20
19 17 15 13 11 9 7 5 3 1	D	112 111 110 109 108 107 106 105 104 103 102 101	D	2 4 6 8 10 12 14 16 18 20
3 1	E	112 111 110 109 108 107 106 105 104 103 102 101	E	2 4
3 1	F	112 111 110 109 108 107 106 105 104 103 102 101	F	2 4
19 17 15 13 11 9 7 5 3 1	G	114 113 112 111 110 109 108 107 106 105 104 103 102 101	G	
19 17 15 13 11 9 7 5 3 1	H	114 113 112 111 110 109 108 107 106 105 104 103 102 101	H	
126 125 124 123 122 121 120 119 118 117 116 115 114 113 112 111 110 109 108 107 106 105 104 103 102 101	J		J	

- Upper Balcony
- Lower Balcony
- Orchestra
- Wheelchair Accessible

Patrons with disabilities: Special seating arrangements can be made with the Box Office at the time you purchase tickets, based on availability.

ELEVATOR



1801 S. Kanner Hwy., Stuart, FL 34994 • (772) 463-4441 • (800) 896-5422 • FAX (772) 463-4446

*Davis Wealth Management Group, an independent firm with securities offered through Summit Brokerage Services, Inc. Member FINRA & SIPC, and advisory services offered through Summit Financial Group, Inc., a registered investment advisor.*



SAVE UP TO  
**20% OFF**  
SINGLE TICKET  
PRICES



Tuesday, **Dec 2<sup>nd</sup>** 2014 7:00pm

**Mediaeval Baebes** - Sourcing lyrics from mediaeval and romantic texts and setting them to original scores using mediaeval and folk instruments, the Baebes offer a beguiling musical beauty and outstanding talent.

Monday, **Dec 8<sup>th</sup>** 2014 7:00pm

**A Darlene Love Christmas - "Love for the Holidays"** -

The legendary Darlene Love will rock her Lyric debut with powerful & soulful renditions of holiday favorites, as only this Rock and Roll Hall of Famer can do.



Monday, **Dec 15<sup>th</sup>** | Tuesday, **Dec 16<sup>th</sup>** 2014 6:00pm & 8:30pm performances each evening

**Merry Bronxmas with the Bronx Wanderers** - will be rocking The Lyric with classic holiday hits done with a Bronx twist.

Saturday, **Jan 17<sup>th</sup>** 2015 7:00pm

**Tito Puente, Jr. "A Walk in My Father's Shoes"** Determined to nurture the musical legacy left by his father, this vibrant entertainer brings a modern edge to the timeless music and rhythms of his Latin heritage.



Saturday, **Feb 14<sup>th</sup>** 2015 7:00pm

**La Diva Tenors** - La Diva Tenors bring Broadway show tunes, a dash of opera and their unique blend of humor and wit to the stage for an entrancing evening of vocal excellence.

Monday, **Mar 2<sup>nd</sup>** 2015 7:00pm

**Stayin' Alive - One Night of The Bee Gees** - Stayin' Alive is a unique recreation of one of the top acts in music history. The production Stayin' Alive is the world's #1 tribute to the Bee Gees.



Tuesday, **Mar 3<sup>rd</sup>** 2015 6:00pm & 8:30pm

**Swingtime - featuring The Jive Aces** -

Renowned for their Jump, Jive and Swing music and spectacular stage show, the *Britain's Got Talent* stars' repertoire stretches from the swing era to the glitz of the Rat Pack, with a dash of rhythm & blues, swing and jazz.

Wednesday, **Mar 11<sup>th</sup>** 2015 7:00pm

**Cirquesco** - Combining the magical artistry of European Circus, with the flirtatious camp of burlesque, Cirquesco is an intimate evening of song, dance, humor and mind-blowing acrobatics.



Monday, **Mar 16<sup>th</sup>** 2015 7:00pm

**Earl Turner's "Box of 45's"** - The "Male Vocalist of the Year" returns to The Lyric for a performance featuring the best of '70s rhythm and blues, from the O'Jays, Temptations and more.

Sunday, **Mar 22<sup>nd</sup>** 2015 6:00pm & 8:30pm

**The Duprees** - Back By Popular Demand! Known for their romantic interpretations of the most beautiful love songs ever written, The Duprees and their unmistakable sound was born and the hits kept coming!



OUR PRE-THEATRE DINNER WILL GET YOU TO THE SHOW ON TIME!

Beer • Wine • Live Music

BREAKFAST LUNCH & DINNER

OSCEOLA STREET Cafe

Please Call for Reservations 283-6116

26 Osceola St., Stuart, FL

GET THE GROUP

AND GO!

The Lyric's group sales staff is here to help you create a memorable evening!

Girls Night Out • Community or Church Events • Employee and Client Appreciation

Order tickets for your group now, call Suzie Bausch at **772-220-1942, ext. 210** or e-mail **LyricBoxOffice@LyricTheatre.com** for more information!

[www.LyricTheatre.com](http://www.LyricTheatre.com)

The future of Stuart's Historic Showplace is brighter than ever these days and a big reason for this success is . . . YOU!

When you support The Lyric – by becoming a member, buying a sidewalk star, joining the Director's Circle or even sponsoring a show – you play a key role in bringing a diverse and exciting slate of world-renowned artists to the Treasure Coast. Your contribution is vital to underwriting The Lyric's daily operations and keeping ticket prices at popular levels. You're invited to play any of the following roles – or all of them!

**BECOME A MEMBER**

Becoming a Lyric member is easy and affordable - and it offers big benefits too! For as little as \$35, you can enjoy advance notice of upcoming events and have the chance to purchase tickets before the general public. Higher membership levels offer even more privileges.

**BE A SIDEWALK "STAR"**

Some of our brightest stars have provided \$1,000 in underwriting to support the restoration fund for Stuart's Historic Showplace. You'll find these "stars" right under your feet as you arrive at The Lyric! In recognition of your contribution you'll receive a bronze star embedded in the sidewalk at the Theatre's entrance with an inscription of your choice.

**SPONSOR A SHOW**

Individuals and businesses can literally get their names in lights when they sponsor a Lyric performance! As a show sponsor, you'll receive complimentary tickets with preferred seating and discounts on additional tickets. You may also help to introduce the artist and receive recognition for your sponsorship. Opportunities may also exist for a private "meet and greet" with the performers after the show. Sponsorships are an ideal way to entertain your clients or friends while providing favorable exposure for your business.

**BE A DIRECTOR**

Should you wish to provide ongoing financial support to the Theatre over a five-year period, you will become an honored member of the Lyric Director's Circle. Your generosity will be recognized through a prominent listing on the Donor Wall in the Theatre lobby as well as a listing in *the Lyric* magazine. You'll also receive invitations to special events and personalized concierge service at the box office.

To become a Lyric Member, call Heather Long today at 772.220.1942, ext. 204 or visit [LyricTheatre.com](http://LyricTheatre.com).

To take part in one of our other great sponsorship opportunities, call the Executive Director's office at 772.220.1942, ext. 208



THE LYRIC THEATRE'S 2014-15

# DISCOVERY

FOR YOUNG AUDIENCES

## Series

### Inspiring Young Minds through the ARTS

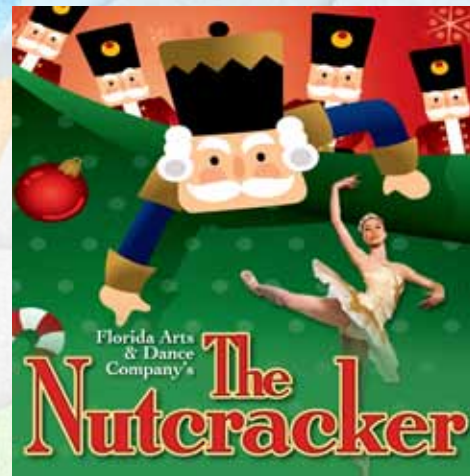
#### THE NEVER EVERGLADES



BACK BY POPULAR DEMAND! Laugh your head off, while learning, through this Florida ECO-Comedy about protecting the environment. Our hero is a bird named Dudley, a Florida Roseate Spoonbill (yes, that's a bird). His nemesis' are The Three Little Pigs, who are destroying the Everglades to build *condo-pigiums!* Join in the fun as Dudley tries to save his Everglades friends from pollution and waste. STUDY GUIDE AVAILABLE! (Best for Grades Pre-K-5)

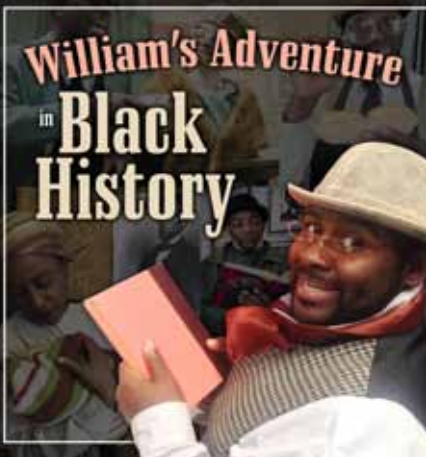
Tuesday, November 18<sup>th</sup>, 2014 | 10:00am & 11:45am

It's Christmas Eve at the Stahlbaum house, and little Clara has fallen asleep under the tree with her beloved new nutcracker gift in her arms. In her dreams, she is transported to a magical world where she helps the nutcracker prince defeat a nasty army of mice, and finds herself in a fantasy land of snow, sweets and toys. STUDY GUIDE AVAILABLE! (For All Ages)



Thursday, December 4<sup>th</sup>, 2014 | 10:00am & 11:45am

#### William's Adventure in Black History



While studying for a difficult test, William's history book comes alive, magically opening a door to four hundred years of Black History. This 45-minute production is fast-paced, funny, and informative. Young audiences will embark on an adventure through time, meeting famous heroes and ground-breakers, and witnessing key moments in the Civil Rights movement. Nearly twenty historical figures come alive in this production and audience interaction abounds. STUDY GUIDE AVAILABLE! (Best for Grades Pre-K-5)

Thursday, February 26<sup>th</sup>, 2015 | 10:00am & 11:45am

When two tourists discover a treasure chest full of historical artifacts, they are magically transported back in time in a fun-filled journey through Florida history. The audience will laugh and learn about Ponce De Leon, the settlement of Pensacola (Florida's "Almost Oldest" city), the founding of St. Augustine, and the "original" Pocahontas story. Age appropriate for grades K-8, but all are welcome to join in the fun! STUDY GUIDE AVAILABLE! (Best for Grades K-8)

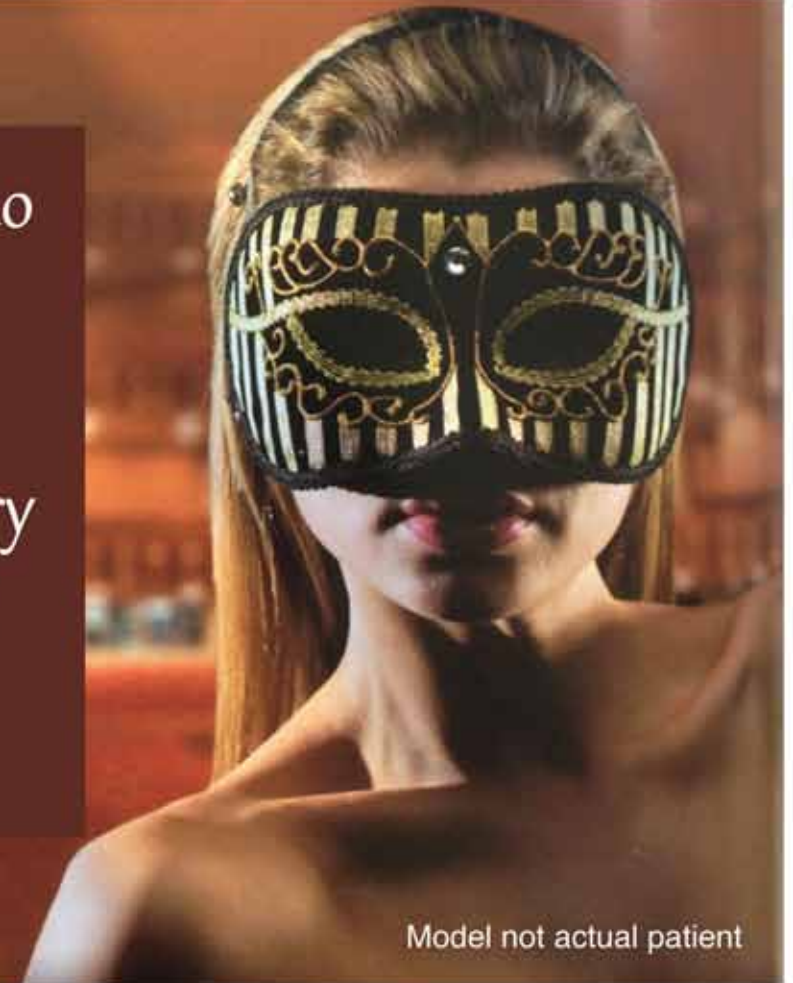


Thursday, March 12<sup>th</sup>, 2015 | 10:00am & 11:45am

FOR MORE INFORMATION ABOUT THIS SERIES OR FOR TICKET INFORMATION  
CONTACT KARIN LEONE AT 772-220-1942 x205 OR AT [KARIN@LYRICTHEATRE.COM](mailto:KARIN@LYRICTHEATRE.COM)

Take Center Stage  
*With the Face and Body You've Dreamed of*  
Breast Enhancement · Facial Rejuvenation · Body Contouring

Dr. John Fasano  
Invites You  
To a  
Complimentary  
Consultation  
772.221.9111



Model not actual patient



509 Riverside Dr., Ste. 206 · Stuart, FL 34994  
[www.JohnFasanoMD.com](http://www.JohnFasanoMD.com)



Connect with us



The Lyric  
Theatre  
Proudly  
Presents

2014-15

# BROADWAY *at The Lyric* Series

**MEN  
are from  
MARS**

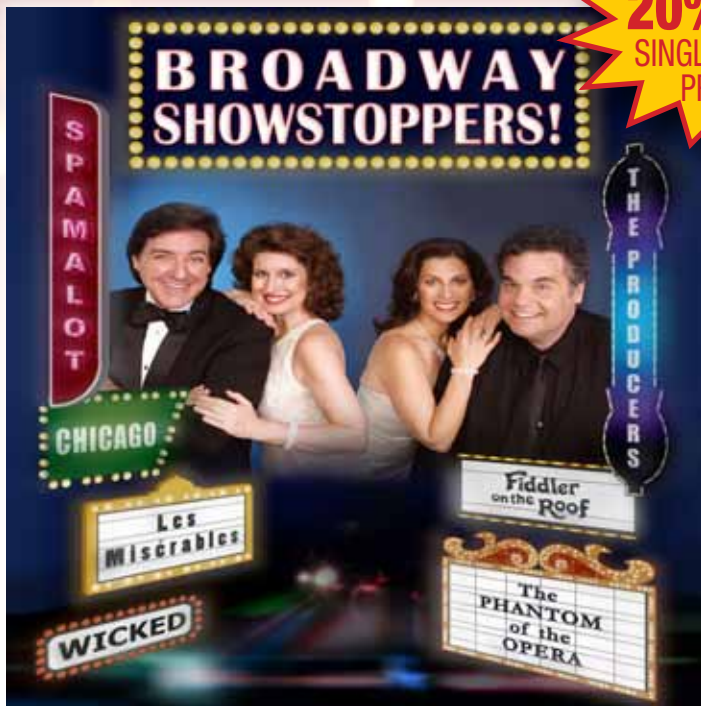
**WOMEN  
are from  
VENUS**



**“THE HIT SHOW!”**

Based on the Best-Selling Book by **JOHN GRAY**

**Jan 9<sup>th</sup>** 7:00pm & **Jan 10<sup>th</sup>** 4:00pm & 7:00pm



**Feb 3<sup>rd</sup>** 7:00pm & **Feb 4<sup>th</sup>** 4:00pm & 7:00pm

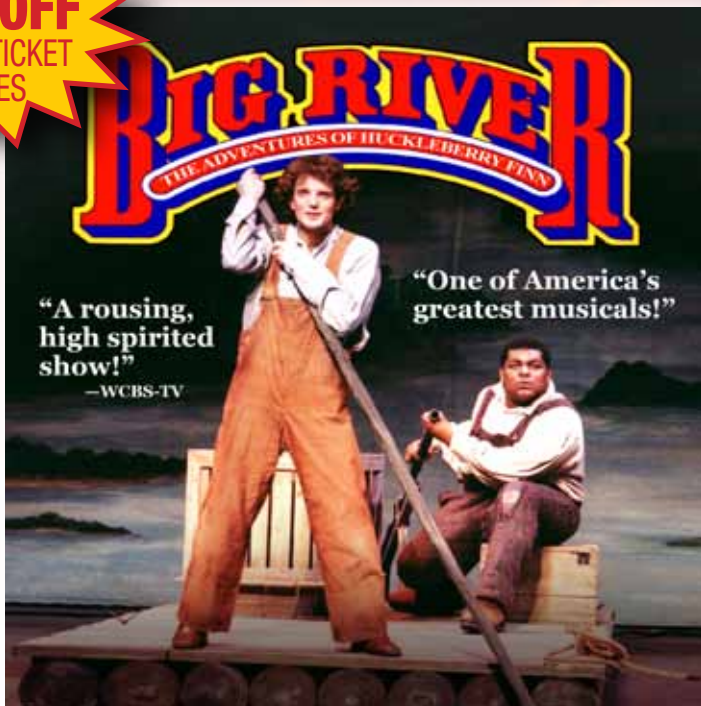
*One family is about to face the music*

WINNER OF 3 TONY AWARDS  
AND THE PULITZER PRIZE

**NEXT  
TO  
NORMAL**

MUSIC BY  
**TOM KITT**  
BOOK AND LYRICS BY  
**BRIAN YORKEY**  
STARRING  
**KARIN LEONE**

**Jan 23<sup>rd</sup>** 7:00pm & **Jan 24<sup>th</sup>** 4:00pm & 7:00pm



**Feb 17<sup>th</sup>** 7:00pm & **Feb 18<sup>th</sup>** 4:00pm & 7:00pm

SAVE  
**20% OFF**  
SINGLE TICKET  
PRICES

**The Lyric Theatre's Newest Series BROADWAY *at The Lyric***

A four show series of the best of New York Theater!

Subscribe Now, call The Lyric Theatre Box Office 772-286-7827 • \$140.00 Subscription price

STYLE • SELECTION • STUART

**Solare**  
SUNGLASSES

"Stuart's Ultimate  
Sunglass Store!"

4 SW Osceola Street | Historic Downtown Stuart, FL 34994  
Phone: 772.287.7887 | Fax: 772.223.5567

Brands & Logos: K&L, bolle, VERSACE, HARLEY, Diesel, BVLGARI, PRADA, HERMÈS, DIESEL, TOM FORD, COACH

*Belle étoile.*

**ARGENTO JEWELRY**

27 S.W. Osceola St. Stuart, FL 34994 • 772.223.1647

*shine like the star you are*

**SAXX**  
HANDBAGS & ACCESSORIES

25 SW Osceola Street | Historic Downtown Stuart, FL 34994  
772.287.9380





## SOUTHERN STEAK & SEAFOOD

*"Where casual meets upscale"*



*Just steps away from The Lyric Theatre in Downtown Stuart*

### **Tuna and 'Tini Tuesday**

\$5.00 House Martini's and \$5.00 off of Ahi Tuna Tartare with Guacamole.

Happy Hour Daily from 4:00 – 7:00 in the bar

1/2 price Sundays, on all brands of Spirits, Beer and Wine  
all night Sunday in the dining room and bar 4:00-9:00. Sunday Only

Daily Specials | Local "Fresh" Farm Ingredients | Family-Owned: Executive Chef Taylor

47 SW Flagler Avenue, Stuart, FL 34994 | Phone (772) 221-9517 | [www.thegafford.com](http://www.thegafford.com)