

# theLYRIC

Winter 2015



Ailey II Dance Company

MEN ARE FROM MARS,  
WOMEN ARE FROM VENUS LIVE!

**ARLO GUTHRIE'S**  
**"ALICE'S RESTAURANT"**  
**50TH ANNIVERSARY TOUR**



# LAW OFFICES OF BONNIE A. BROWN

514 Colorado Avenue | Stuart, Florida 34994

(772) 221-9024 | FAX: (772) 221-9086

www.bonnieabrownpa.com | info@bonnieabrownpa.com



## **REAL ESTATE LAW**

- Residential & Commercial
- For Sale By Owner
- Business Acquisitions & Sales

## **ESTATE PLANNING**

- Last Will & Testament
- Living Trust
- Durable Power of Attorney
- Living Will
- Health Care Surrogate

## **PROBATE**

- Summary Administration
- Formal Administration



## A letter from the Executive Director

Hope your Holiday Season has been a pleasant one filled with good things. The Lyric's new look is almost finished and I'm sure you've noticed a few details that need more work.

Well here we go again with a full slate of great shows! My

"Don't Miss Performances" are Next To Normal, Ailey II, and Savion Glover, just to name a few.

I also want to bring your attention to all of the other not-for-profit organizations we partner with to help them raise money for their causes. Treasure Coast Humane Society, House of Hope, Salvation Army of Martin County, Volunteers in

Medicine, and St. Paul African Methodist Episcopal Church are just a few of the many organizations The Lyric helps to always make sure they raise funds, get community awareness and never lose money.

Be safe, enjoy all of our shows and be sure to always  
LOVE THE LYRIC!

Best,

P.S. We promise to bring back Art Cinema soon...



- 3 Letter from the Executive Director
- 4 Board of Directors & Staff
- 11 The Lyric Curtain Rises from the Ashes
- 16 Historical Timeline
- 22 2014-15 Season Lineup
- 25 Volunteer Bartenders & Ushers
- 26 2013-2014 Director's Circle & Contributors
- 28 Theatre Box Office and General Information
- 28 Seating Chart
- 31 Sponsorship Opportunities



## **On the cover:**

Anne Akiko Meyers will be playing one of the rarest violins in existence, the Ex-Viuxtemps Guarneri del Gesu on January 29 at 7pm.  
*Read more on page 20*



# SEASON SPONSORS

The Friends of the Lyric, Inc. would like to thank these sponsors who have generously helped to underwrite the costs of our 2014-2015 Season.

*the Esplanade*

DOWNTOWN APARTMENT MANAGEMENT LLC  
Marie and Michael Braid

 **Leighton**  
Transportation

*Indian River*  
MAGAZINE

**PBG** lifestyle  
magazine

MCCARTHY  
SUMMERS  
BOBKO  
WOOD  
NORMAN  
BASS  
& MELBY P.A.  
Attorneys at Law

*Oculina*  
**Bank**  
"The Friendly Bank"

## Board of Directors

**President**  
Ethel Christin

**Vice President**  
Eileen Morris  
Tim Timmons

**Treasurer**  
Frank M. Byers, Jr.

**Secretary**  
Linda Weiksnar

**Directors**  
Eric Crawford  
Patty Downing

Stephanie Flicker  
Stephen Fry  
Marianne Hartnett  
Betsy Herold  
Hope Jochem  
Todd Laycock  
Stacey Levy  
Joan McGowan  
Rachel Scott  
Paul Shirley  
Kenan Siegel  
May Smyth  
Steven Swann  
Nancy Wong  
John Ziegler

## Advisory Board

Priscilla Baldwin  
Bridget Baratta  
Denise Belizar  
Daisy Carter  
George Coates  
Elaine Cook  
Howard Cook  
Lisa Fricke

Elisabeth Lahti  
George Lehach  
Natalie MacDonald  
Pat Pendergast  
Jacquelyne Schuman  
Patricia Simmons  
Gloria Wolfe  
Sam Zemsky

**Executive Director**  
John Loesser

## Lyric Theatre Staff

**Assistant Executive Director**  
Kia Fontaine

**Controller**  
Monica Soricelli

**Director of Development**  
Linda Prange

**Membership Director**  
Heather Long

**Director of Education and Operations**  
Karin Leone

**Production Manager/Technical Director**  
Robbie Shekon

**Director of Hospitality**  
Savannah Richmond

**Facilities Director**  
Tom Wiegnerink

**Box Office Manager**  
Meagan Ebright

**Accounting Assistant**  
Kellie Jocoy

**Art Director**  
Michael Renfro

**Manager of Bar Services**  
Mitch Meislohn

**Box Office Services**  
Ron Colangelo,  
Sheila DeRig, Wendy  
Lucas, Diane Meislohn  
and Susan Nauss

**Volunteer Coordinator**  
Phyl Weaver

**House Managers**  
Jean Aukerman,  
Lauran Griffith,  
Linda Lambrecht,  
Irene Luneski and  
Phyl Weaver

**Copywriter & Creative Services**  
Gracie Loesser

**House Physician**  
Richard D. Loew, D.O.

**Legal Advisor**  
Terence P. McCarthy

# Ocean Media

## Solutions in Direct-Mail and Digital Marketing



## Increase Sales with Powerful Lead Tracking

Monitor, measure and track your online, mobile and direct-mail results in real time

Mobile Apps  
Custom Websites



Social Media  
SEO/Online Marketing



Custom Analytics  
Call Tracking



Mobile | Web Design | SEO/SEM | Apps | Social Media | Direct-Mail

Connect with us:



**Ocean Media**  
solutions

**772-232-8012**

3727 SE Ocean Blvd. • Ste 200 • Stuart, FL  
www.OceanMediaSolutions.com





**SAILFISH REALTY OF FLORIDA**

With Sailfish Realty, there's never a "transaction" fee.

Supporting The Lyric.  
Supporting The Arts.

101 East Ocean Blvd., Ste. 102 • Stuart, FL 34994 • 772.494.6999 • sailfishrealty.com

**WATER POINTE REALTY GROUP**

*Representing the Finest Properties... from Inlet to Inlet*

**7 KINGSTON COURT, SEWALL'S POINT, FLORIDA 34996**

MLS#376421

Awesome 2 story home offers almost 4,500sf of living area featuring formal living & dining, separate family room, 4 bedrooms, and 4.5 baths. A huge 500+sf bonus room allows room to spread out. Gourmet kitchen with gas range, open island, & generous eat-in area create an inviting appeal.






[www.WaterPointe.com](http://www.WaterPointe.com) | Stuart/Sewall's Point, 3727 S. East Ocean Blvd., Suite 100 • Stuart, FL 34996 | 772.220.4343

**Atlantic CLASSICAL ORCHESTRA**

*Celebrate Excellence*

 Stanislav Khristenko, Piano

 Brian Blanchard, French Horn

 duo imPuls, Piano

 Caroline Goulding, Violin

**SINGLE TICKETS ON SALE NOW!**

BOX OFFICE: 772.460.0850  
[www.ACO-music.org](http://www.ACO-music.org)

**25**  
25th ANNIVERSARY  
1990-2015

**PALM BEACH GARDENS | ESSEX | 3:00 PM**  
JANUARY 13 | FEBRUARY 10 | MARCH 10 | APRIL 7

**VERO BEACH | WAXLAX CENTER | 7:30 PM**  
JANUARY 14 | FEBRUARY 12 | MARCH 12 | APRIL 8

**STUART | LYRIC THEATRE | 4:00 & 8:00 PM**  
JANUARY 16 | FEBRUARY 13 | MARCH 13 | APRIL 10





THE PORT ST. LUCIE CIVIC CENTER

*Why look anyplace else for your next event? It's all right here!*



Weddings & Receptions



Dances & Parties



Expos & Conferences

With featured gourmet, in-house catering, on-site audio/visual service, dedicated and experienced staff, the Port St. Lucie Civic Center is the ideal venue for your next event.



Port St. Lucie  
**Civic Center**  
Where the Research Coast Meets

**Call now for info!**  
**(772) 807-4488**

9221 SE CIVIC CENTER PLACE  
PORT ST. LUCIE, FL 34952

## Welcome to the SAILOR'S RETURN



- Indoor / Outdoor Bar & Dining • Banquets & Parties
- Ingress Enclosure on the Entire Patio when Cold or Rainy
- Complimentary Valet Parking
- Come by Boat - 930 Feet of Courtesy Docking (Latitude 27.2 / Longitude -80.2538)



Reservations Recommended: 772-872-7250 Check for our Entertainment schedule at: [TheSailorsReturn.com](http://TheSailorsReturn.com)  
Open for Lunch & Dinner: 11:30am - Closing • 625 Southwest Anchorage Way, Stuart, FL



**Romagosa**  
Dermatology Group  
LLC

## SKIN CANCER SPECIALISTS



Board Certified  
Dermatologists:

Rick Romagosa, M.D.  
Yvonne Romagosa, M.D.  
Greg Barron, M.D.  
Samantha Fisher, M.D.  
Sarah Cerminara, M.D.

Romagosa Dermatology Group offers a full array of skin care treatments to help you achieve your skin care goals. From the treatment of skin cancer to a wide variety of cosmetic procedures, it is our desire to meet all of your dermatological needs.



**772.220.3339**



**Accepting new patients!**

INSURANCES: Medicare, Tricare, Standard, BCBS, PPO & PFFS, Humana PPO & Commercial HMO, and most Cigna plans

2220 SE Ocean Blvd. • Suites 102 and 301 • Stuart, FL 34996 • [romagosadermgroup.com](http://romagosadermgroup.com)

DISCOVER 5 SPECTACULAR **KOLTER COMMUNITIES** ON THE

# Treasure Coast

**MODELS OPEN DAILY**



**Tres Belle Estates, Stuart**  
1/2-acre homesites with spectacular preserve and lake views  
Adjacent to Atlantic Ridge Preserve State Park  
Low HOA fees  
Convenient to I-95 and Turnpike  
**Priced from the \$500s - \$800s**



*The Falls*  
OF  
**JENSEN BEACH**

**The Falls of Jensen Beach**  
Gated, private and tranquil  
Large homesites  
Preserve and lake views  
A-rated public schools  
Minutes from a variety of restaurants, entertainment, shopping and area beaches  
**Priced from the mid \$300s - \$600s**



**PGA Village Verano**  
Grand gated entranceway  
3 world-class golf courses  
Activities and social clubs • Har-Tru tennis  
Resort-style pool and Indoor Jr. Olympic lap pool  
Minutes from shopping and dining  
**Priced from the high \$200s - \$500s**



**RIVER GLEN**  
WATERFRONT TOWNHOMES

**River Glen, Stuart**  
Waterway and preserve views  
Large backyards  
Close proximity to I-95  
**Priced from the \$200s**



**CANOPY CREEK**

**Canopy Creek, Palm City**  
Over 600 acres of lakes, preserves and parks  
Minimum 1/2 acre homesites  
Miles of trails within the community  
No back-to-back homesites  
Convenient access to Turnpike and I-95  
**Priced from the \$600s - \$1 Million**

Call or visit us online today to discover more about these and other great Kolter Communities.

**888-481-8514 • KOLTERHOMES.com**



Pricing, availability, specifications, and amenities are subject to change without notice. Realtors are warmly welcomed. Photos may not be representative of actual home.



**KOLTER**



Belle étoile



ARGENTO JEWELRY

27 S.W. Osceola St. Stuart, FL 34994 • 772.223.1647

shine like the star you are ★

With the holiday season over, it's time to ring in the New Year with a diverse line-up of stand-up comedians, dance ensembles, and, as always, a little rock and roll at The Lyric Theatre.

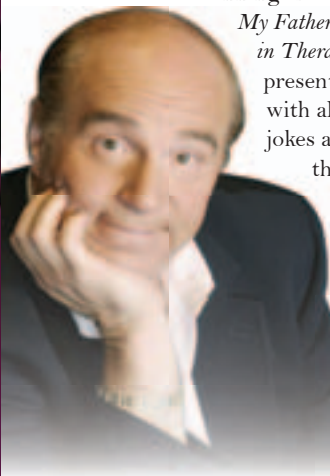
Now that you've regained your sanity after the holiday madness, prepare to lose it again with the help of everyone's favorite wacky comedian in **Steve Solomon's Cannoli, Latkes, and Guilt** (January 6, 2015: 7:00pm).

Author and star of the three-time award winning show *My Mother's Italian, My Father's Jewish, and I'm in Therapy*, Steve Solomon presents a brand new show with all of your favorite jokes and many more. The therapy continues with *Steve Solomon's Cannoli, Latkes, and Guilt*, a show that will have you rolling in the aisles as you meet Steve's dysfunctional, but loveable, family. A master dialectician and comedy veteran, Steve Solomon captures the voice and personality of every

single one of his family members so well, you'll think they're on stage with him.

Steve Solomon grew up in Brooklyn, New York in the diverse neighborhood of Sheepshead Bay. A class-clown and prankster at an early age, Steve always had a knack for comedy. Recognizing his innate sense of comedic timing, Steve Solomon developed his skills into a full-time professional career. Over the years, Steve's witty one-liners and hilarious impersonations have earned him the reputation as a master of one-man comedy shows. Steve has performed in over 75 cities and 3 countries over the past five years in a variety of venues, from intimate theaters to main stages on the Las Vegas strip. Unfazed by the glamour of show business, Steve Solomon has stayed down to earth over his career, committed to writing real, honest jokes that everyone can relate to.

In *Steve Solomon's Cannoli, Latkes, and Guilt*, Steve incorporates all of the most popular jokes and skits from his previous award-winning performances while still keeping things fresh



Steve Solomon's  
Cannoli, Latkes & Guilt  
Jan. 6th | 7:00pm

## THE LYRIC CURTAIN RISES FROM THE ASHES

with a whole new round of comedy pieces. If you loved *My Mother's Italian, My Father's Jewish, and I'm in Therapy* or Steve's holiday special, *My Mother's Italian, My Father's Jewish, and I'm HOME for the Holidays*, you will love his latest production. Prepare to meet over twenty members of Steve's family, including his cigarette-addicted sister and Steve's father, who looks at his burial plot as a future vacation getaway spot.

The Lyric is proud to welcome acclaimed R&B duo **Marilyn McCoo and Billy Davis, Jr.**

(January 7th, 2015: 6:00pm & 8:30pm) to downtown Stuart. Former members of the popular vocal group, The 5th Dimension, Billy Davis, Jr. and Marilyn McCoo have been heralded as one of America's most successful and beloved musical duos in history. With seven Grammys, fifteen gold and three platinum records to their name, the famous R&B duo and married couple have brought their message of love and happiness to their fans for over 40 years. Hear some of Marilyn McCoo and Billy Davis, Jr.'s biggest hits this season, including "You Don't Have to be a Star (To Be in My Show)" and "My Reason to Be."

Opening for Marilyn McCoo and Billy Davis, Jr. is Stewie Stone, one of the comedy world's best kept secrets. Given any topic or circumstance, Stewie Stone will have a witty response, and the charming comedian has become known for his witty rapport with audiences across the country. Stone has opened for major acts, including Roberta Flack, the Village People, and the Temptations, and has performed in major venues around the United States from Madison Square Garden to Carnegie Hall.

As members of the wildly successful vocal group The 5th Dimension, Marilyn McCoo and Billy Davis, Jr. recorded a number of major hits, including "Up, Up, and Away," "Aquarius/Let the Sunshine In," and "Wedding Bell Blues." After ten years with The 5th Dimension, Marilyn McCoo and Billy Davis, Jr. split from the group and began recording and performing as a duo. McCoo and Davis' careers only continued to climb after their



Ana Popovic  
Feb. 22nd | 7:00pm

..... continued on page 16

The Friends of the Lyric, Inc. is a 501(c)(3) not-for-profit organization

www.LyricTheatre.com





*Celebrating 10 Years! Thank You Stuart!*

**An Integrated Health Approach  
with Professionalism, Quality & Reliability**

Chiropractic | Acupuncture | Physiotherapy  
 Massage Therapy | Physical Exams\* (DOT, School, Sports)  
 Melissa Spina, DC, \*National Registry of Certified Medical Examiners

**Call 772.781.9221 today to  
schedule an appointment.**

**Ocean Chiropractic  
& Health Center**  
of Stuart

Ocean Chiropractic and Health Center of Stuart | 811 SE Ocean Blvd.  
 Stuart, FL 34994 | 772-781-9221 | oceanchiropracticstuart.com



**BREAKFAST • LUNCH • DINNER**

**Daringly Traditional.**



THE TRIPLE J SANDWICH  
Exclusively at TooJay's

**TOOJAY'S**  
• RESTAURANT AND DELI •

**Stuart Regency Square (772) 287-6514**

**You crave it. We serve it.**

Since 1981, TooJay's has been delighting diners with an exciting and eclectic menu for breakfast, lunch and dinner. Friendly, professional service is a part of every meal, so make plans today to join us for "a little taste of home."

**LEGENDARY DESSERTS**



Carrot Cake



Black & White Cookies

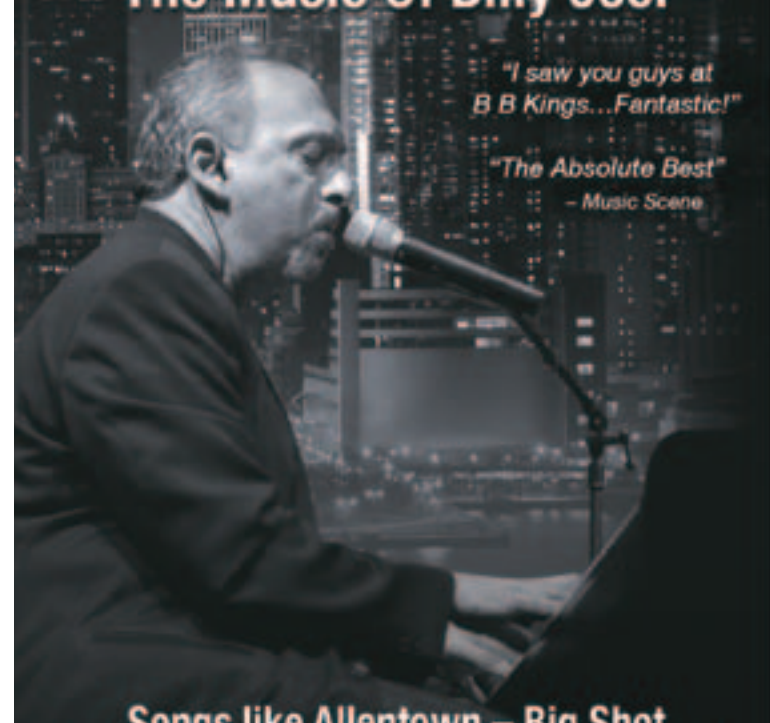


Chocolate Killer Cake

**"A New York State Of Mind"**  
**Tony Monaco  
& The Fabulous Turnstiles**

**How Do You Top A Sellout?**  
**Encore 2015!**  
**The Music Of Billy Joel**

*"I saw you guys at B B Kings...Fantastic!"*  
*"The Absolute Best"*  
 – Music Scene



**Songs like Allentown – Big Shot  
 Movin' Out – Piano Man – Uptown Girl  
 And many more!**

**Friday, February 20, 2015 • 8:00 pm**  
**Buy Your Tickets Early!**

**Upper Balcony \$27.00**  
**Reserved Seats \$32.00**  
**VIP Meet & Greet \$37.00**

**Tickets: On Line At [www.lyrictheatre.com](http://www.lyrictheatre.com)**  
**Box Office or Call 772-286-7827**

**Presented By:**  
**Starbrite Musical Productions**



**"As welcome as an antacid after  
a bowl of 5-alarm chili!"**  
 – Music Scene

GRAY MATTERS PRESENTS

*Sex, Drugs  
and Gettin' Old!*

**ASSISTED  
LIVING:  
THE MUSICAL**



**"Lively and wickedly funny!"**  
 – San Francisco Examiner



**TALK ABOUT HIT SONGS!**

Saggin, Saggin, Saggin-My Tush is Draggin...  
 Help I've Fallin for You, and I Can't Get Up...How We Love Our  
 Walkers...Viagra-I'll Get A Little Help From My Pill...  
 Half a Ton Of Cadillac Steel and much more musical frivolity!

**"I had to get my husband a second tank of oxygen!"**

**\$27.00 Upper Balcony      \$32.00 Reserved**  
**\$37.00 VIP**

*(Because you're important or you can't hear well!)*

**TICKETS: Online at: [www.lyrictheatre.com](http://www.lyrictheatre.com)**  
**Box Office or Call 772-286-7827**

*The newly renovated LYRIC THEATRE Downtown Stuart*

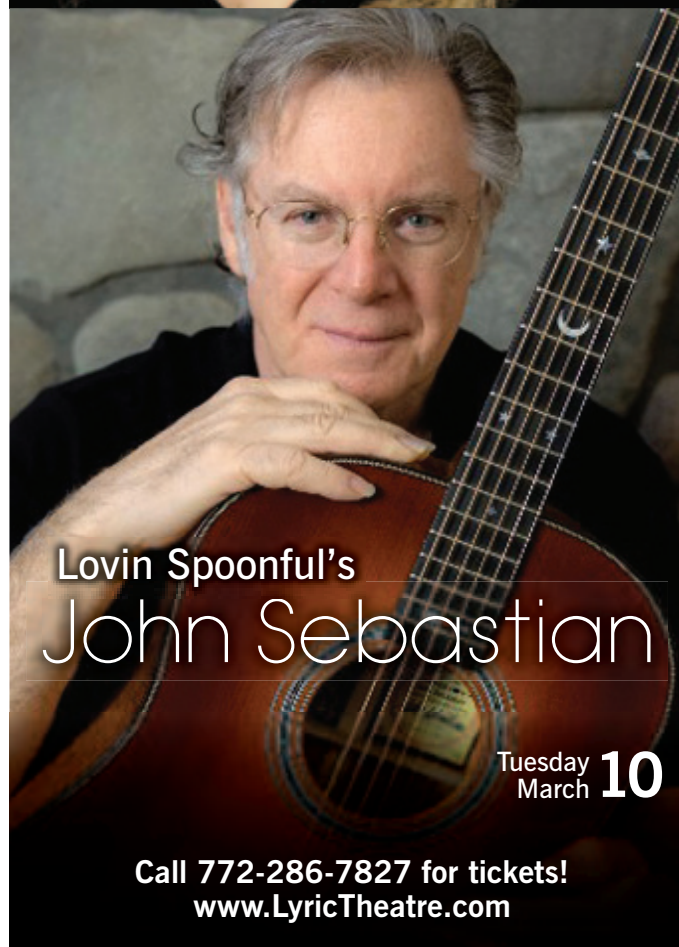
**Saturday, February 21, 2015 • 8:00 pm**



MusicWorks presents  
An Intimate Evening with  
Judy Collins



Saturday  
March **28**



Lovin Spoonful's  
John Sebastian

Tuesday  
March **10**

Call 772-286-7827 for tickets!  
[www.LyricTheatre.com](http://www.LyricTheatre.com)

*Celebrating*  
**28** Years  
of  
Excellence

1986 - 2014

## JUST GOLD JEWELERS

Just Gold Jewelers is a family-owned fine jewelry retail store known for its high quality traditional and contemporary designer pieces in 14 or 18 karat, platinum or silver.

Designers include: Bashoura, Dove, Fredric Sage, Gottlieb, H Weiss, Imperial, Makur, Martin Flyer, Mastini, Mastoloni, Mazza, Meira T, Nanis, Oro Alexander, Rahmanan, Sal Praschnik, Tony Maccabi, Tara, Yael. Watches by Accutron, Bulova & Caravelle. Waterford Crystal and Reed & Barton Sterling are also on hand.

Custom Just Gold designs, jewelry and watch repair, and appraisal services are available year round.

Cedar Pointe Plaza  
2691 S.E. Ocean Blvd., Stuart, FL  
772.283.6717  
[www.justgoldjewelers.com](http://www.justgoldjewelers.com)



Be Our Guest.



**Harbour Ridge** is a private member owned club where golfers and tennis players mingle with yachters and nature enthusiasts to create an active community of residents, each of whom is proud to call Harbour Ridge home. We invite you to see for yourself and...**Be part of Harbour Ridge.**

Ask for more details on our **Be Our Guest** introductory program\*:

- two nights in a fully furnished condominium
- two rounds of golf for two on either of our championship golf courses
- unlimited use of our state-of-the-art fitness center
- two lunches for two and a casually elegant dinner for two that includes a glass of wine or cocktail to complement your dining experience
- enjoy the beauty of Harbour Ridge from the St. Lucie River on a guided riverfront cruise

For information on home and boat slip purchase opportunities, please contact our Membership & Marketing Department at (772) 873-6013 or send an e-mail to [l.pahl@hrycc.org](mailto:l.pahl@hrycc.org).



\*For a nominal fee



**HARBOUR RIDGE**  
YACHT & COUNTRY CLUB

12600 Harbour Ridge Blvd. | Palm City, FL 34990 | 772.336.3000 | [www.HarbourRidge.com](http://www.HarbourRidge.com)



departure, as the two enjoyed immediate success with the release of the #1 hit “You Don’t Have to be a Star (To Be in My Show),” which earned them a Grammy award for Best R&B Vocal Performance by a Duo/Group. Since then, Billy Davis, Jr. and Marilyn McCoo have performed across the world for a variety of audiences, including most notably Pope John Paul II and a number of U.S. presidents.

As solo entertainers, Marilyn McCoo and Billy Davis, Jr. have also enjoyed great success. In the 1980s, Marilyn McCoo hosted the popular television music series, *Solid Gold*, and recently, the award-winning recording artist appeared in the Broadway production of the musical *Show Boat* in the role of Julie. Like his wife and recording partner, Billy Davis, Jr. has also thrived on the stage, starring in the hit musical *Blues in the Night*, as well as performing in a regional production of *Dream Girls*. Davis also released an album in the 1980s entitled *Let Me Have a Dream*, a religious recording completed in collaboration with Reverend James Cleveland.

In their newest CD, *The Many Faces of Love*, Marilyn McCoo and Billy Davis,

Jr. recorded a collection of love songs written by some of the most prolific songwriters of the 1960s and 70s. The album explores the ups and downs of their own relationship as a married couple, a theme that appears in many of their recordings and live performances. Drawing upon their personal combination of faith, love, and patience, McCoo and Davis try to impart a little bit of wisdom unto their audience with every performance they give through the medium of song. Marilyn McCoo and Billy Davis, Jr.’s performance at The Lyric Theatre this season celebrates over 40 years in the entertainment industry, featuring some of the biggest R&B, pop, and soul hits of the last half century.

You can’t live with ‘em. You can’t live without ‘em. And you certainly can’t live without seeing this hilarious one-man show based on the best-selling book by John Gray:

**Men are from Mars, Women are from Venus LIVE!**

(January 9<sup>th</sup>, 2015: 7:00pm & January 10<sup>th</sup>, 2015: 4:00pm & 7:00pm). Written by the award-winning playwright Eric Coble, *Men are from Mars, Women are from Venus LIVE!* is filled with sage wisdom and quirky advice on how to navigate relationships in the 21<sup>st</sup> century. The show debuted in the U.S. in 2007, starring the brilliant actor and comedian Peter Storey, who has appeared on a number of television series including *CSI*, *Without a Trace*, and *Ugly Betty*.

The inspiration for the show, John Gray’s eponymous *New York Times* best-seller,

sold over 50 million copies worldwide and has been translated into over 40 languages. The

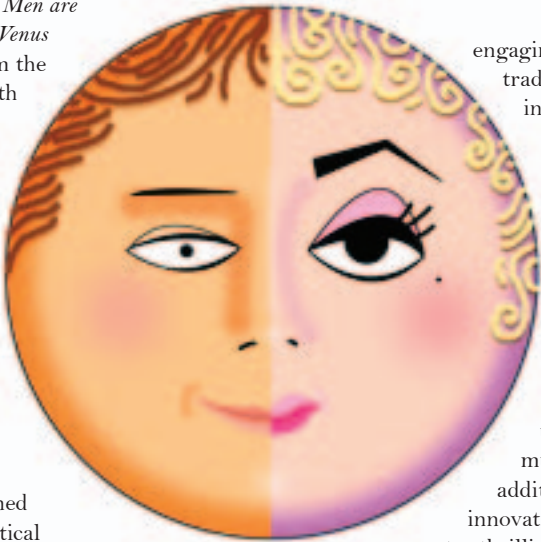
book has become one of the most recognizable titles in the world. The show, however, is more than just the book. *Men are from Mars, Women are from Venus LIVE!* fuses references from the original source material with Peter Storey’s own unique stand-up routine. In the starring, and only role, is Peter Storey, an alum of the New Harmony Project and an accomplished actor with recurring roles on *The Tonight Show* and NPR.

Covering everything from dating and marriage, to the bedroom, *Men are from Mars, Women are from Venus LIVE!* originally opened in Paris in 2007 to wide critical acclaim. Seen by over one million people throughout Europe, the show finally debuted in the U.S. for the first time in 2013. The U.S. production is brilliantly directed by Broadway veteran Mindy Cooper, whose past shows include *Beauty and the Beast*, *Chicago*, and *Titanic*. Since its debut in Raleigh, the show has swept the nation, titillating audiences across the country with its insightful take on love and relationships.

Following this, The Lyric presents the wildly talented percussion group **Vocal Trash** (January 15<sup>th</sup>, 2015: 7:00pm). With the vocal harmonies of *Glee* and the creative rhythms of *Stomp*, *Vocal Trash* presents a unique musical experience incorporating singing, industrial-style drumming, comedy, and award-winning break dancing. Led by child star Kelsey Rae, *Vocal Trash* is an environmentally-conscious production with urban flair. From New York to Beijing, *Vocal Trash* has brought audiences to their feet with energetic performances of pop hits including “I Gotta Feelin’” and “Footloose.”

By presenting environmental issues in an urban setting, *Vocal Trash* explores critical contemporary topics in a refreshing and

Men are from Mars,  
Women are from Venus LIVE!  
Jan. 9<sup>th</sup> | 7:00pm  
Jan. 10<sup>th</sup> | 4:00pm & 7:00pm



engaging way. Rather than using traditional pre-fabricated instruments, the cast of *Vocal Trash* demonstrate their musical skills on everyday, found objects, including washboards and trashcan drums. Each and every performance of *Vocal Trash* is a new experience, as they experiment with sound and rhythm on unique, self-constructed musical instruments. In addition to their instrumental innovation, the ensemble incorporates thrilling break dancing choreography as well as professional vocal arrangements to create a show unlike any other.

For a show that will be sure to warm you up this winter, don’t miss **Tito Puente, Jr. “A Walk in My Father’s Shoes”** (January 17<sup>th</sup>, 2015: 7:00pm). The son of the American salsa and Latin jazz legend Tito Puente, Tito Puente, Jr. is determined to continue his father’s legacy of bringing joy to audiences worldwide through joyful and uplifting music. Never forgetting his salsa and jazz roots, Tito Puente, Jr. still maintains a sound all his own, bringing a modern Latin sound to traditional mambo and salsa. Just like his father, Tito Puente, Jr. is best experienced live, so don’t miss Tito’s intimate performance on The Lyric stage this January.

Harnessing his father’s legendary energy and style, Tito Puente, Jr. has performed in venues across the country, from symphony halls to jazz festivals. Over the past five years, Tito has played over 300 shows, impressing audiences with his vibrant and innovative Latin jazz compositions. In 2004, Tito Puente, Jr. released *In My Father’s Shoes*, a critically

acclaimed album that was made into a BET Jazz television special of the same name. On radio and television, Tito has appeared on the NPR tribute *The Apollo at 70: A Hot Night in Harlem* as well as on the ABC soap opera *One Life to Live*, playing alongside his big band. Tito Puente, Jr. has also performed in a number of symphonies across the United States, including the Dallas, San Antonio, and South Bend symphonies.

Tito Puente, Jr.’s latest release entitled *Got Mambo?* marks a new turning point in his music career. Featuring guest artists Bobby Cruz and Hansel & Raul, *Got Mambo?* is a perfect mixture of both old-school mambo and innovative salsa compositions. The album has been praised by tropical and Latin Jazz critics as a career-changing release, elevating Tito to a whole new artistic level. Tito will be performing songs from *Got Mambo?* and many more this January for a night of hip-shaking fun.

Don’t miss one of the most powerful musicals of the last decade, **Next to Normal** (January 23<sup>rd</sup>, 2015: 7:00pm & January 24<sup>th</sup>, 2015: 4:00pm & 7:00pm) at The Lyric Theatre this January. *Next to Normal*, a “brave and breathtaking musical” according to *The New York Times* and a show that “pushes Broadway in new directions” says *Rolling Stone*, is a gripping and honest portrayal of one suburban household grappling with mental illness. This winner of three Tony Awards, including Best Musical Score and the Pulitzer Prize, was also chosen as “one of the year’s ten best shows” by critics around the country, including *The Los Angeles Times*, *The Washington Post*, *Rolling Stone* and *The New York Times*. This emotional powerhouse musical is set to a thrilling contemporary rock score, with book and lyrics by Brian Yorkey and music by Tom Kitt.

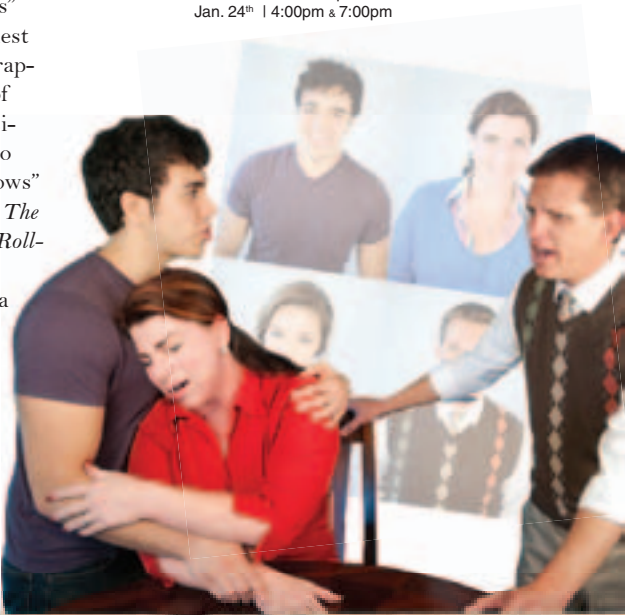
*Next to Normal* got its start Off-Broadway in 2008, where it was met with great reviews, winning the Outer Critics’ Circle Award for Outstanding Score. After a brief stint playing at the Arena Stage in Washington,

D.C., *Next to Normal* debuted on Broadway in April of 2009. That year, the musical was nominated for eleven Tony Awards, eventually winning awards for Best Original Score, Best Orchestration, and Best Performance by a Leading Actress. *Next to Normal* also won the Pulitzer Prize for Drama, becoming the eighth musical in history to receive the honor. Since its run on Broadway, the production has spread across the globe, premiering in Peru, Germany, Israel, and many more countries.

The award-winning show deals tenderly with critical contemporary issues from modern psychiatric practices to living life in suburbia. *Next to Normal* follows the story of a suburban mother, Diane Goodman, as she comes to terms with her own bipolar disorder and about a family trying to take care of themselves and each other amid the humor and turmoil of mental illness. Karin Leone, most recently seen as Ms. Adelaide in The Lyric’s *Guys & Dolls in Concert*, will reprise her role as tortured mother Diana Goodman as seen in *Next to Normal* at The Lyric in 2013. Under Jared Walker’s provocative direction, *Next to Normal* is “much more than a feel-good musical. It is a feel-everything musical.” – *The New York Times*

continued on page 20

Next to Normal  
Jan. 23<sup>rd</sup> | 7:00pm  
Jan. 24<sup>th</sup> | 4:00pm & 7:00pm



A BRIEF HISTORY OF  
THE LYRIC  
THEATRE

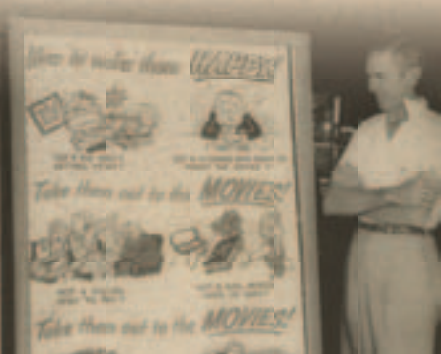


**SPRING OF 1913**  
Construction for The “first” Lyric began on Osceola Avenue near Belle Flora and opened for its first performance a year later.

**1917**  
The “first” Lyric was abandoned and moved to a little wooden structure on Osceola Avenue

**MAY 27, 1925**  
Construction of The “new” Lyric Theatre commenced on Flagler Avenue

**MARCH 15, 1926**  
The “new” Lyric Theatre opened to the public with the feature picture “Skinner’s Dress Suit”



**NOVEMBER 29, 1930**  
Newly equipped with RCA Photophone sound picture machines, The Lyric Theatre opened with railroad thriller “Danger Lights” (picture with sound)

**1941**  
The Lyric Theatre fell on hard times after the depression and closed its doors. Over the following years, it

was rented out to community groups and was used to present traveling vaudeville shows, news weeklies and movies

**1978**  
The Lyric was purchased by New Life in Christ Church and served as a venue for weekly services





EXPERTS IN EYE CARE FOR OVER 25 YEARS



**Florida Eye Group**

- Custom Cataract Surgery
- Advanced Technology Lens Implants
- Treatment of Glaucoma and Macular Degeneration
- Clear Lens Exchange
- Eyelid Surgery
- Comprehensive Eye Exams
- Dry Eye Clinic

Accepting Most Insurances

[www.FloridaEyeGroup.com](http://www.FloridaEyeGroup.com)

1859 SE Port St. Lucie Blvd., Port St. Lucie 772.777.2210  
Complimentary Cataract Screening at the PSL location

2055 Military Trail Suite #307 Jupiter 561.747.7777  
Located in Jupiter Outpatient Center

OUR PRE-THEATRE DINNER WILL GET YOU TO THE SHOW ON TIME!



Beer • Wine • Live Music

BREAKFAST  
LUNCH & DINNER

OSCEOLA STREET  
*Cafe*

Please Call for Reservations  
283-6116

26 Osceola St., Stuart, FL.

**plus 50**  
Community Colleges:  
TAKE YOUR KNOWLEDGE  
TO THE NEXT DEGREE

**The Plus 50 Encore Completion Program: Your Gateway to Success**

American Association of Community Colleges

**Indian River State College**

- Many Americans age 50 and up are now heading back to campus
- Competition in today's workforce is fierce, especially for adults over 50
- A college degree or certificate gives an advantage: it increases potential earning power, job security, and job satisfaction, while also helping to give back to the community.
- The Plus 50 program at IRSC features two Certificate programs that can be completed in one semester:
  - The Medical Coding for Professional Services Certifications
  - The Certified Nursing Assistant

**IRSC**

Contact the Corporate and Community Training Institute at IRSC @462-7630 for more information  
Main Campus, 3209 Virginia Ave. Ft. Pierce

**Board Certified Orthopaedic Surgeons  
Providing Specialized Care  
of bones, joints and muscles**



William E. Anspach, III, MD  
William E. Carlson, MD  
Scott M. Desman, MD  
George J. Haas, MD  
James D. Hoffman, MD  
Nathaniel H. Hill, MD  
Daniel S. Husted, MD  
Steven K. Jordan, MD  
Anuj Prasher, MD  
Check C. Kam, MD\*  
Anthony J. Cerminara, MD\*  
John D. Beelitz, MD\*

**SOUTH FLORIDA  
ORTHOPAEDICS  
& SPORTS MEDICINE**

New  
St. Lucie West  
Office!

[www.SouthFlaOrtho.com](http://www.SouthFlaOrtho.com)  
1050 SE Monterey Road • Stuart (772) 288-2400  
124 SW Chamber Court • St. Lucie West

**TenderCare**  
Services  
Professional | Experienced | Reliable

**In Home Nursing and Companion Care**  
From one hour to twenty-four hours

**FREE CONSULTATION**  
Family-owned and operated  
Available 24 hours/day; 365 days/year

- Hourly and Live-in Care
- Nursing/Personal Care
- Medication Management
- Meal Prep/Light Housework
- Companionship • Transportation
- Household Chores • Reasonable Rates

Serving Martin, St. Lucie, Indian River,  
Okeechobee and Palm Beach Counties

Call us anytime on **772-220-3090**  
or visit us at [www.TenderCareFL.com](http://www.TenderCareFL.com)

Nurse Registry License NBR20211418

Tribute to "The King" **March 1, 2015 - 8PM**

**Scott Ringersen "The Elvis Experience"**

Proudly Presented By  
**Southeast Florida Honor Flight**

Tickets available at [www.lyrictheatre.com](http://www.lyrictheatre.com)  
or at box office call 772-286-7827

Tickets \$36  
The Lyric Theatre is located at 59 S.W. Flagler Ave  
Stuart, FL

Show sponsored by  
Dr. Shamsher Singh  
Proceeds will benefit  
Honor Flight





Folk music lovers, be sure to mark your calendars, because the legendary Arlo Guthrie is coming to The Lyric Theatre for the much-anticipated **Alice's Restaurant 50<sup>th</sup> Anniversary Tour** (January 26<sup>th</sup> and 27<sup>th</sup>, 2015: 7:00pm). Commemorating the 1967 song that shot him into stardom, singer-songwriter and folk legend Arlo Guthrie will perform "Alice's Restaurant" in its entirety for the first time in over a decade. *Alice's Restaurant 50<sup>th</sup> Anniversary Tour* will feature the eighteen minute-long anti-war anthem and Thanksgiving favorite as well as a number of other Guthrie classics, from "Massachusetts" to the Woodstock hit "Coming into Los Angeles."

Born on Coney Island in 1947, Arlo Guthrie was raised by his mother, a professional dancer, and his father, the famous folk musician and political activist Woody Guthrie. As a child, Arlo was inspired by many of his father's fellow folk artists and friends, including Lee Hays, Ronnie Gilbert, and Pete Seeger. Well acquainted with the development of folk music in the early to mid-twentieth century, Arlo

Guthrie quickly developed his own style, bridging generations of folk music to bring folk to a 1960s audience. Guthrie recorded arguably his most famous song in 1967, "Alice's Restaurant Massacre," at the tender age of 19. A spoken monologue set to guitar, the song documents an incident in Guthrie's life in which the young activist was able to avoid the Vietnam War draft by committing the minor crime of littering. The 1967 album enjoyed wide popular and critical success, becoming a platinum-selling album and eventually being made into a feature-length motion picture in 1969.

After his initial success, Arlo Guthrie continued to develop his reputation as the voice of a new generation of folk musicians. Guthrie performed at Woodstock in 1969, where he showcased his famous release "Coming into Los Angeles," which was also included on the platinum-selling Woodstock album and film. Arlo Guthrie's beloved song "Massachusetts," which celebrates the state in which the artist lived for most of his life, became Massachusetts's official state folk song in 1981. In 1983, Guthrie became an independent artist, establishing the record label Rising Son Records, one of the first indie labels ever created. Since its inception, Rising Son Records has released over twenty of Guthrie's recordings. Aside from his prolific music career, Arlo Guthrie has appeared in television and film roles, including recurring roles in the television series *The Byrds of Paradise* and *Relativity*. Guthrie is also an accomplished photographer and the author of three childrens books.

For the five decades since "Alice's Restaurant" was released in 1967, Arlo Guthrie has embarked on an anniversary tour every ten years. This latest tour, beginning in January of 2015, marks the 50<sup>th</sup> anniversary, and fifth anniversary tour, since the song's release. Due to the excessive length of "Alice's Restaurant," the anniversary tour performances are the only times when Guthrie performs the song in full to a live audience. Once the two-year tour is over, the song is again removed from the performance roster. As Guthrie jokes, "I'll do it again for the 60<sup>th</sup> anniversary, or I'll be dead. Whichever comes first." The once-in-a-decade opportunity to see Arlo Guthrie's live performance of "Alice's Restaurant" is coming to The Lyric Theatre this January.

Up next is a concert violinist that has taken the classical music world by storm:

## Anne Akiko Meyers

(January 29<sup>th</sup>, 2015: 7:00pm). Touted as one of the world's premier concert violinists, Anne Akiko Meyers is world-renown for her brilliance as an orchestral soloist and

recording artist. The international classical sensation plays on one of the rarest and most exquisitely crafted violins in existence, "the Ex-Viextemps" Guarneri del Gesu violin, valued at over \$16,000,000. Named one of the top stories of 2010 on *Countdown with Keith Olbermann*, Anne Akiko Meyers' reputation as one of classical music's brightest stars is only growing. Her performance at The Lyric Theatre this season will feature an intoxicating arrangement of works by some of the world's greatest composers, including Mozart, Ennio Morricone, and Arvo Pärt.

Born in San Diego, California, Meyers picked up the violin at a very early age, beginning her studies with Shirley Helmick in Southern California. A gifted young musician, Meyers performed with the New York Philharmonic at the age of 12. Anne Akiko Meyers continued her musical studies with Josef Gingold at Indiana University and later studied under Dorothy DeLay, Felix Galimir, and Masao Kawasaki at Juilliard in New York City. By the time she was eighteen, Meyers had recorded her first album with the Abbey Road Studios record label, which featured the Royal Philharmonic Orchestra. When she was 23, Meyers received the coveted Avery Fisher Career Grant for her outstanding achievements in classical music. Throughout her career, Meyers has performed with the

Chicago, Detroit, Nashville, and Richmond symphonies. In 2012, she co-commissioned a concerto with the Pittsburgh Symphony, which she premiered alongside with conductor Leonard Slatkin.

Anne Akiko Meyers' experience extends beyond symphonic performances. The talented violinist has collaborated with major recording artists, including Chris Botti, Wynton Marsalis, and Ryuchi Sakamoto. She has appeared twice on *The Tonight Show* and has performed the National Anthem in front of 42,000 fans at the Safeco field in Seattle, Washington. Her most recent 2013-2014 tour took her across the world, from North America to Asia. This past year, Anne Akiko Meyers released the album *The Four Seasons: The Vivaldi Album*, which features the Vivaldi Triple Concerto on which Meyers performs all three parts. Anne Akiko Meyers now lives in Austin, Texas and sits on the advisory board of the Young Concert Artists organization based in New York City.

For some much-needed post-election political humor, check out **Capitol Steps** (January 30<sup>th</sup>, 2015: 6:00pm & 8:30pm). Featured prominently four times



a year on NPR, the *Capitol Steps* comedy special brings a much-needed sense of humor to the absurdity of American politics. Since their formation in 1981 by a group of Senate staffers, *Capitol Steps* has covered everything from domestic political scandals to Putin impressions. *Capitol Steps* explores the daily headlines, creating song parodies and skits that will leave you in stitches.

In 1981, when a small group of Senate staff members put together a collection of song parodies for an upcoming Christmas party, no one imagined that it would become one of the country's most celebrated comedy specials. Following its immediate success on the Hill, the staffers decided to take their routine on tour, and now, over thirty years later, *Capitol Steps* is more successful than ever, bringing laughs to audiences across the United States. Although the original staff members/comedians are no longer part of the line-up, the group's wit and biting commentary lives on today. Expanding beyond the stage, *Capitol Steps* has taken their routine to the radio, performing the show *Politics Takes a Holiday* four times a year on National Public Radio.

Since 1981, *Capitol Steps* has recorded over 30 albums, which includes their most recent recording *How to Succeed in Congress Without Really Lying*. Today, the traveling comedy troupe features 30 members who have worked in a combined eighteen Congressional offices and have over 62 years of collective House and Senate experience. Their performance at The Lyric Theatre this season will cover the hottest and strangest topics in the news, from voting fraud to filibusters. Partial proceeds benefit Volunteers in Medicine.

You may have heard doo wop, but never like this. This February, The Lyric is excited to present **The Doo Wop Project** (February 2<sup>nd</sup>, 2015: 7:00pm). Starring cast members of the Broadway hit musical *Jersey Boys*, *The Doo Wop Project* explores the vibrant history of the doo wop

continued on page 32



**1987**  
With talk of razing the theater, Friends of the Lyric, a group of concerned citizens, banded together to save the historic structure

**MARCH 18, 1988**  
Friends of the Lyric entered into a contract with the New Life in Christ Church and purchased theater

**1993-1995**  
With assistance from community grassroots efforts and grants, The Lyric Theatre underwent much needed repair

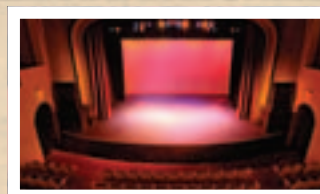


from marquee improvements, exterior painting, new roofing and air-conditioning systems, ADA compliance alterations, box office construction, and remodeling of the restrooms and dressing room

**NOVEMBER 12, 1993**  
The Lyric Theatre was listed on the National Register of Historic Places

**1996**  
New seating installed in the orchestra section and administrative offices constructed

**2001**  
The Balcony of the theater was remodeled for the installation of new balcony seating, an elevator was installed and refurbishment of the lobby and restrooms



**2002**  
Lighting and Sound Equipment upgraded

**2004-2005**  
The expansion of the Lyric was commenced and completed, enlarging the stage by 14 feet and equipping The Lyric with a backstage with flex-dressing area, a restroom, and office/storage areas. The "Star" dressing room also underwent renovation to offer a quaint comfortable room with a shower and restroom.

**NOVEMBER 11, 2014**  
New Orchestra Seating, New Entrances, Renovated Lobby, Sound and Lighting Improvements





# THE 2014-15 Season!

									
JANUARY 23 <sup>rd</sup> & 24 <sup>th</sup>	JANUARY 26 <sup>th</sup> & 27 <sup>th</sup>	JANUARY 29 <sup>th</sup>	JANUARY 30 <sup>th</sup>	FEBRUARY 2 <sup>nd</sup>	FEBRUARY 3 <sup>rd</sup> & 4 <sup>th</sup>	FEBRUARY 5 <sup>th</sup>	FEBRUARY 9 <sup>th</sup> & 10 <sup>th</sup>	FEBRUARY 14 <sup>th</sup>	FEBRUARY 15 <sup>th</sup>
									
FEBRUARY 19 <sup>th</sup>	FEBRUARY 22 <sup>nd</sup>	FEBRUARY 23 <sup>rd</sup>	FEBRUARY 24 <sup>th</sup>	FEBRUARY 27 <sup>th</sup>	MARCH 3 <sup>rd</sup>	MARCH 5 <sup>th</sup>	MARCH 6 <sup>th</sup>	MARCH 7 <sup>th</sup> & 8 <sup>th</sup>	MARCH 9 <sup>th</sup>
									
MARCH 11 <sup>th</sup>	MARCH 15 <sup>th</sup>	MARCH 16 <sup>th</sup>	MARCH 19 <sup>th</sup> & 20 <sup>th</sup>	MARCH 22 <sup>nd</sup>	MARCH 24 <sup>th</sup>	MARCH 25 <sup>th</sup>	MARCH 26 <sup>th</sup>	APRIL 11 <sup>th</sup>	

Tickets available online, by phone and at The Lyric Box Office!

[www.lyrictheatre.com](http://www.lyrictheatre.com) (772) 286-7827



# THE CABINET GALLERY INC

*You Dream It, We'll Build It*



**SPECIALIZING IN QUALITY CABINETRY SINCE 1997**

KITCHENS • BATHROOMS • OFFICES • WET BARS  
ENTERTAINMENT CENTERS • LAUNDRY ROOMS

**COMPLETE REMODELING AND DESIGN SERVICES AVAILABLE**

**633 NW BAKER ROAD, STUART, FL**  
(NORTH OF THE ROOSEVELT BRIDGE, BEHIND PUBLIX)

**772-692-3667**  
[www.cabinetgallery.net](http://www.cabinetgallery.net)

Hours: Mon-Fri 9:00 AM - 4:00 PM • Evening and Weekend Appointments Available



**BRUCE R. ABERNETHY, JR.**  
ATTORNEY AND COUNSELOR AT LAW

**FLORIDA BAR BOARD CERTIFIED IN:**  
WILLS, TRUSTS, AND ESTATES

MASTERS DEGREE IN TAX LAW (LL.M. TAXATION) • FORMER PRACTICING FLORIDA CPA

**SPECIALIZING IN:**

- Estate and Business Planning
- Asset Protection Planning
- Estate, Gift, & Generation Skipping Tax Minimization Planning
- Charitable Gift Planning
- Trust and Estate Administration



**31 YEARS OF EXPERIENCE**

PLANNING, PROTECTING,  
PROBLEM SOLVING...  
PROVIDING PEACE OF MIND

**772.489.4901**

[BAbernethy@bruceapa.com](mailto:BAbernethy@bruceapa.com)

130 S. Indian River Drive, Suite #201 Downtown Fort Pierce, FL 34955

## 2014-15 Volunteers

### bartenders

Judy Cialone  
Polly Chrisholm  
Ron Colangelo

Barbara Connell  
Leslie Cuatt  
Jim Egan

Kathy Grant  
Kevin Grant  
Allison Griffin

Maribeth Konz  
Diane Meislohn  
Bertha Perez

Bea Radliff  
Barbara Thommes  
Pat Westbrook  
Reva Zemke

### ushers

Pamela Alverson  
Mary Pat Anderson  
Frank Anuso  
Barbara Assalone  
Jean Aukerman  
Michael Bennett  
Rita Borucki  
Camille Bowers  
Tom Britton  
Patti Brown  
Monika Bush  
Anita Canali  
Corky Clark  
Joan Clark  
Janet Lynn Cooley

Aleta Crabtree  
Nancy Cunningham  
Dorothy DeFino  
Jean DeFrancis  
Kendra Deltano  
Bobbie Demers  
Linnea Desmond  
Sheila Dixon  
Joan Elliot  
Judy Endresen-Worthy  
Jerry Felton  
Bobbie Forman  
Dana Forman  
Ranelle Furniss  
Susan Fusco

Maureen Gallagher  
Mary Ann Galletta  
Jean Garneau  
Mary Helen Garner  
Joan Gross  
Howard Hall  
Maureen Hanahan  
Betty Hanneman  
Barbara Hatfield  
Elaine Herman  
Renee Hill  
Helen Hilly  
Linda Hirvonen  
Ruth Holman  
Susan Indilicato

Sally Jackson  
Ronald Jacobstein  
Tammy Klein  
Gayle Kochan  
Kathy Koivula  
Edna Kulla  
Mary Lamalie  
Rusty Landgren  
Pat Lawler  
Pam MacCormack  
Patti McFadden  
Joanne McNeill  
Pauline McHugh  
Phil McHugh  
Paul Minicozzi

Mary Moody  
Virginia Moore  
Ronald Nelson  
John O'Dea  
Pat Pendergast  
Carole Power  
Keith Quintavalle  
Frances Rago  
Joyce Reed  
Marcy Roeder  
Donna Rollins  
Claire Ronan  
Rita Rooker  
Eileen Rublowsky  
Stanley Rublowsky

Norma Rumbaugh  
Sue Ann Saleeby  
Pete Seif  
Marilyn Sihler  
Kay Snelson  
Marion Stahle  
Gladys Stevenson  
Marilyn Summers  
Martha Terrenzi  
Janice Tucker  
Pauline Voeller  
Chris Wright  
Janice Wright

THESE VOLUNTEERS, AS WELL AS A CAST OF HUNDREDS WHO ARE TOO NUMEROUS TO MENTION HERE, PROVIDE INVALUABLE ASSISTANCE THROUGHOUT THE SEASON. IF YOU ARE INTERESTED IN VOLUNTEERING, PLEASE CONTACT [INFO@LYRICTHEATRE.COM](mailto:INFO@LYRICTHEATRE.COM)



# 2014-15 Contributors

Thank you to all those generous contributors who have donated \$100 or more to The Lyric Theatre as of September 1, 2014. If we have inadvertently overlooked your name in this listing, please accept our sincere apology and notify our Development Director at 772.220.1942, extension 209.

## Director's Circle

*The following donors have generously committed to providing sustained support of The Lyric over a five-year period as part of the Director's Circle program:*

Butch & Jan Bayley Judy Berkes Ellen L. Blum Bernie & Starr Boniface Bob Burson Frank M. Byers Jr. Vince & Sharyn Cerniglia Ethel & Jack Christin Ann Corwell Bill & Audrey Crandall Jan & Bob Crandall Dr. & Mrs. William Crook Mr. & Mrs. Casey Cummings Peter D. and Julie Fisher Cummings Family Foundation Michael & Diane Dadko Lee & Gaby Eisey Robert H. Fier, MD Jack Fink Stephanie Flicker & Peter Freudenberg	Jean Friend Paul & Annette Gartzman Mary & Dan Gescheidle Eileen Morris & Bob Griffin Dave & Vicki Grove George & Marianne Hartnett Mrs. Elizabeth Herold The Herold Family Ray & Peg Hirvonen Foundation Hope G. Jochem Joseph C. Kempe, PA Mr. & Mrs. Knight Kiplinger The Kiplinger Foundation Mr. & Mrs. Keith Kopp Elisabeth Lahti Lesser, Lesser, Landy & Smith PLLC Stacey K. Levy Sharon & Greg Lewis Mr. & Mrs. H.W. Lichtenberger The Lichtenberger Foundation	Ed & Jacqui Lippisch Frank Loesser Enterprises John & Laura Loesser Susan Loesser Natalie J. MacDonald Lindy Donigan & Deane MacMillan Carol & Jack McCarthy Steve & Julianne McGovern Edward & Joan McGowan Frank & Lore Metzger Steven Munn Judy Nelson Oculina Bank Dorothy Ohlbach Bonnie K. Barker & George J. Pappas Randy & Linda Prange Douglas & Carol Rearick Lauri J. Goldstein-Scher & Dr. Elliott Scher	Ms. Jacquelyne Schuman Janet & Charles Seidler Paul Shirley Patricia Simmons Mr. & Mrs. Vincent A. Smyth Carol C. Spera Douglass & Patricia Stewart Swann Family - Steven, Daryl, Cody & Ky Frank & Judith Tidikis Clayton & Anna Timmons Barbara B. Trimble United States Sugar Corporation Mr. & Mrs. Charles Walgreen III Ronald W. Werner Nancy & Yung Wong Sam & Shirley Zemsky John & Kay Ziegler
--	--	---	---

### Diamond Patron (\$5,000 & Up)

Robert P. Bauman  
Elaine M. Buff  
Mr. & Mrs. Albert Cardinali  
Dubose & Dorothy Heyward  
Memorial Fund  
Dana & Kathy de Windt  
Milton Fine  
Mort & Brigitte Harris  
Gen. & Mrs. Gerald Hart  
MAH Foundation  
Carolyn Metzger  
Mr. & Mrs. Jerry Rappaport  
Thomas & Meaghan Schmitt  
Kenan & Betsy Siegel  
Robert & Carol Weissman  
Ed & Willie Welter

### Gold Patron (\$1,000 & Up)

Emil & Shirley Baer  
Joseph & Chan Bank  
Suzanne M. Beers  
Camille Bowers  
Robert Boyhan  
Ralph & Christine Brown  
John & Margaret Ann Brutvan  
Thomas & Polly Campenni  
Jeff & Mary Christopher  
Carole & Paul Cole  
Howard & Elaine Cook  
Tim & Maureen Cotter  
Mrs. Albert M. Covelli  
Albert M. Covelli Foundation  
Eric & Jeanne Crawford  
Sharyon Daigneau  
Pat Deerin  
Michael & Nancy Del Priore  
Len Dinter  
Patty Downing  
Joan & Bob Fisher  
Russell Attridge & Barbara Flowers  
Kia Fontaine  
Allen & Nancy Forbes  
Dr. Helen Franke  
Wayne & Debra Freihofer  
Todd & Margaret Gibbs  
Barry & Merle Ginsburg  
Sam & Diane Greenawalt  
Dr. & Mrs. Ronald Grober  
John & Sara Hazelton  
Robert & Patricia Hendrickson  
Edward P. & Juanita J. Henson  
Richard & JoAnn Hinckley  
Jim & Jan Hogan  
Wayne & Paula Hundt  
Mr. & Mrs. James Jacobs

Madeline & James A. Jacobs  
Philanthropic Fund  
Franklin Cole & Judith Nightingale  
Anthony & Suzanne Kissling  
Abby Koffler  
Mr. & Mrs. Fred Kopf  
The Kopf Family Charitable Fund  
Michael & Lois Lazarus  
John & Linda Loewenberg  
Mr. James LoPrete  
Louis and Nellie Sieg Fund  
Andrea Lutz  
Bob & Ralf Massey  
John & Nancy McCoy  
Mr. & Mrs. James F. Orr III  
Kevin Peterson  
Mr. & Mrs. Bill Philipbar  
Karen Rodgers  
Bill & Rita Rolo  
Robin Miley & Scott Sade  
Gerry Saelzer  
Saelzer/Atlas Wealth Management  
Group Raymond James  
Rabbi Dannel & Suzi Romanik  
Schwartz  
Chuck & Rachel Scott  
Vivian Shaw  
Mr. & Mrs. Earl Smith  
Susi & Bud Sterling  
Ray & Elyn Stevenson  
Mr. & Mrs. Charles Sumner  
Transparent Audio  
The Town Mag LLC  
Richard & Lucy Thomas  
Mrs. Ina Tornberg  
Jo & Ron Vent  
John & Carol La Re Wagner  
Jeff Weber  
Comerica Bank  
James & Magalen Webert  
Linda Weiksna  
Nancy Wertheim  
Dr. George & Gloria Whittle  
Donna Wigdahl  
Margaret Richebourg & John Wilson  
Gloria Wolfe  
Jim & Ann Young  
Richard & Nancy Zappala  
Walt Zeigler

### Silver Patron (\$500 & Up)

Carol Gesser & Dr. Anis Akrawi  
Mr. & Mrs. Anthony Amanti  
Frank Anfuso  
Patricia Arney  
Bank of America  
Mr. & Mrs. William Baxter  
Thomas C. Beddows  
Beddows Commodities, Inc.

Ed & Denise Belizar  
Michael Benigno  
Accurate Air Conditioning Co LLC  
Dr. Mitchell Biederman  
Paul & Shannon Burke  
John Bystom  
Anita Ross Canali  
Mr. & Mrs. Charles C. Carella  
Daisy Carter  
Howard & Elaine Cook  
Robert Stengel & Valerie Crane  
James E. Culbert  
Donald & Gail Curtis  
Ronald Daugherty  
Joe & Vicki Davis  
Harland & Carolyn Dolamore  
Ed & Robin Donner  
Marilyn E. Dudlik  
John & Karen Edds  
Carl & Sirkka Firley  
Mr. & Mrs. Lester E. Frankenthal  
Donna L. Friedman  
Tower Consultants, Ltd  
Jim & Sally Friend  
Stephen & Aida Fry  
Julie Gibson  
Cindy & Michael Goldberg  
Susi & Frank Goldstein  
Peter & Gayle Grimm  
Mr. & Mrs. William Hardin  
Craig & Linda Harlan  
Thomas C. Hartzog  
Diane Haskett  
Mr. & Mrs. Tom Hawken  
Stuart Web Inc.  
Mary & Richard Holleman  
Judy & Steve Horgan  
Wayne & Marti Huizenga  
Lynn & Bud Johnson  
Earl & Jonette Kidd  
Lon & Audrey Kight  
Mr. & Mrs. Keith W. Klarin  
Mr. & Mrs. Jules Knapp  
Dottie Kohl  
Beverly Kutsagoitz & John Mauerman  
Kathy LaBar  
Treasure Coast Harley Davidson  
Jeanne Lambdin  
Todd & Margaret Laycock  
LifeReloaded Speciality Publishing LLC  
Lolita Lindstrom  
Charles McCormick  
Char & Jack Meyerling  
L.J. & Susan Miller  
J. Scott & Susan Miller  
C. Theodore Murphy  
Mary Ann & Joseph Nazare  
Mr. & Mrs. Ron Ognar  
Dr. & Mrs. Edward M. Overfield

Anne Parsons  
Pat Pendergast  
Rick Perez  
Bobbi Proctor  
Gary & Joan Pyne  
Robert & Carol Rozzi  
Anne Steuart  
Jeff & Sue Teach  
Tom & Sandy Thurlow  
Ted & Pat Tiemeyer  
Mr. & Mrs. Gordon Toney  
Tri County Golf Cars  
Jerome & Carol Trautschold, Jr.  
Wipeout Pests & Termites  
Mr. & Mrs. Robert E. Valle  
Karen & Joseph Vessely  
Tom & Vicki Wackeen  
Meg Winter  
Beth Zimmerman  
Mr. & Mrs. Paul Zimmerman

### Patron (\$100 & Up)

Jeff Webert  
John & Kathryn Adamiak  
Dr. Karl Drehobl & Amy Albert  
Dr. & Mrs. Albert Altongy  
Joan & John Amerling  
Chet & Lee Amond  
Constance C. Anderson  
Howard & Sandra Anderson  
Sharon Anderson  
Frances B. Andre  
Jo Ellen Andrews  
Mr. & Mrs. Beryl Anthony  
Bob & Barb Apley  
Jean Arena  
Patrick & Nicole Armstrong  
Harriet Aronson  
Bonnie Arrington  
Joseph Ascrizzi  
Jeff & Deanna Atlas  
Ann B. Avallone  
Robert W. Bailey  
Mike Bachman  
Joanne C. Baker  
Ginger Baldwin  
John Moffitt & Priscilla Baldwin  
Renee & Joel Barkan  
John & Rosilynn Barone  
Gerry & Mary Anne Bartfield  
Susan & Jules Bauduc  
Mitich & Lynn Baumeister  
Richard & Eva Baumgart  
Lisa Bebout  
Theresa Beditz  
Barbara Begleiter  
Mr. & Mrs. Walter S. Bell  
Ralph Bennett  
Richard & Myrna Bennett  
Roger & Margaret Bernot  
Dr. & Mrs. Charles Berwitz

Linda Bisbee  
Mr. & Mrs. Terry Bischoff  
Robert A. Bishop  
Dr. & Mrs. Richard Blagbrough  
Mary Boman  
David Bourbeau  
Mary Ann & Robert Bowie  
Joan Boyce  
Robert Boyhan  
Jack & Dodie Boyle  
R. W. & D. A. Bradshaw  
Gail & Wally Brady  
Mr. & Mrs. Michael Braid  
Downtown Apartment Management LLC  
Robert Brands  
Linda Braswell  
Sarah & Tom Brendal  
Arlene & Alfred Bressaw  
Bill & Melanie Flanigan  
Jan Flynt  
Brian & Phyllis Foley  
Bonnie Foley  
Robert & Paula Follweiler  
Louis Forino  
George Forese  
Robert & Ann Fortunato  
Mr. & Mrs. Richard Foster  
Caterpillar Foundation  
Lanning & Jane Fox  
Ron Frank  
Steve & Lynn Frank  
Melissa Fricke  
Janie Fuller  
Jerry Fuller  
Susan F. Fullerton  
Dr. & Mrs. Milton Gallant  
Paul & Irene Garfinkle  
Mary T. Garner  
Mr. & Mrs. John Garofalo  
Mary & Brian Geary  
Jo & Jeffery Gillman  
Steven Gladstone  
Charles & Robbin Glover  
Elaine Goddard  
Porfirio & Mary Ann Gomez  
John & Kathy Gonzalez  
Kathleen & George Goodwin  
Mr. & Mrs. David Gordon  
Carol A. Goulding  
Mr. & Mrs. Robert Grabowski  
Flamingo Pools & Patios Inc.  
Diane & Fred Graczyk  
Henry & Rachelle Grady  
David Graf  
Lois & Hadar D. Granader  
Lorene Grant  
Robert & Mary Graves  
Robert Grayson  
Robert & A. Greene  
Judith Greenstein  
Howard K. Gregory  
Nunzio & Dorothy Grella  
Jo Griffith  
Barbara Grimmer  
John Grimmer

David & Cynthia Collier  
Bill & Joan Collins  
Mr. & Mrs. Fred L. Comfort  
Dorothy Conant  
John Connell  
Janet Coppoletta  
Joseph & Nicki Costella  
Gary & Jan Coton  
Mr. & Mrs. Noel Couture  
Charlotte Cox  
Lori Coyle  
Mark Crosby  
Robert Crowder  
Mr. & Mrs. Louis Cucci  
Marie Culbreth  
Paul & Linda Daly  
Mr. & Mrs. Joseph D'Andrea  
Stephen Davenport  
Dr. Megan Davis  
Stan & Nancy Davis  
Marianne Dee  
Patrick Deegan  
Michael DeFontes  
Mrs. Janice DeLater  
Mr. & Mrs. Edward Demarest  
Mr. & Mrs. Gerard DeMont  
Earl & Ann Dempsey  
Holly B. DeSantis  
Dr. & Mrs. Keith de Windt  
Perry Diamond  
Richard Dickerson  
Richard Dilts  
John J. Dixon  
Dr. Edith Donohue  
Elaine & David Doran  
Alan Dorfman  
Mr. & Mrs. Andrew Doyle  
Betsey Doyle  
Mr. & Mrs. Bruce Doyle  
Donald & Diana Doyle  
Jay Dubin  
Rosemary Dudley  
Brian & Mary Dugan  
Mark & Debra Duvall  
William Dwyer  
Elizabeth Dymowski  
Cynthia & Bill Eaton  
Michele Edwards  
Bernadette Ellingsen  
David & Anne K. Elliot  
Mary Jane Ely  
Mr. & Mrs. Richard Enright  
Albert Evans  
Ralph & Sylvia Evans  
Janet Fairbanks  
Mark Fairchild  
Sandra Fehribach  
Thomas Ferrante  
John Fiadini  
Donald & Elizabeth Fine  
Richard & Emily Fineberg  
Mr. & Mrs. Alan H. Finegold  
Carl Fischer  
Rip & Noreen Fisher  
Elizabeth Fitzsimmons  
Mrs. Lucette Flanagan  
Bill & Melanie Flanigan  
Jan Flynt  
Brian & Phyllis Foley  
Bonnie Foley  
Robert & Paula Follweiler  
Louis Forino  
George Forese  
Robert & Ann Fortunato  
Mr. & Mrs. Richard Foster  
Caterpillar Foundation  
Lanning & Jane Fox  
Ron Frank  
Steve & Lynn Frank  
Melissa Fricke  
Janie Fuller  
Jerry Fuller  
Susan F. Fullerton  
Dr. & Mrs. Milton Gallant  
Paul & Irene Garfinkle  
Mary T. Garner  
Mr. & Mrs. John Garofalo  
Mary & Brian Geary  
Jo & Jeffery Gillman  
Steven Gladstone  
Charles & Robbin Glover  
Elaine Goddard  
Porfirio & Mary Ann Gomez  
John & Kathy Gonzalez  
Kathleen & George Goodwin  
Mr. & Mrs. David Gordon  
Carol A. Goulding  
Mr. & Mrs. Robert Grabowski  
Flamingo Pools & Patios Inc.  
Diane & Fred Graczyk  
Henry & Rachelle Grady  
David Graf  
Lois & Hadar D. Granader  
Lorene Grant  
Robert & Mary Graves  
Robert Grayson  
Robert & A. Greene  
Judith Greenstein  
Howard K. Gregory  
Nunzio & Dorothy Grella  
Jo Griffith  
Barbara Grimmer  
John Grimmer

Mrs. Nina Griswold  
Marilyn Grossman  
Anthony Gunn  
Delph Gustitus  
Rita Guzenski  
John & Kathryn Haines  
Christopher Hallberg  
Patricia Hamblin  
Tom & Sally Hamby  
Rev. Allardyce A. Hamill  
Bill & Jo Hamilton  
Edith & Herb Hanke  
Ron & Lyn Hanlon  
Tissa Harrah  
Suzanne Harrington  
Phyllis Harrison  
Pat Hatch  
Mary Jane Heimann  
Mr. & Mrs. James Henderson  
Thomas Henghold  
Phil Henley  
Mrs. Robin G. Henn  
Patrick & Mary Hennessy  
Cynthia F. Herbst  
Alex F. Hernandez  
Kathryn McHale & David Heron  
Mr. & Mrs. Allen Herskowitz  
Wade Hersperger, Jr.  
Mr. & Mrs. Donald Hesch  
Michael C. Hill  
Mr. & Mrs. Werner Hilpert  
Doug P. Hine  
Jeff Hines  
Thomas & Sandra Hirsch  
Bohdan Hodiak  
Nancy Hogle  
Rich & Teresa Hohman  
Madelyn & Tom Holder  
Tommy Holder  
Mrs. Dana Hole  
Kay B. Holtz  
Ida Hood  
Marilyn Horan  
Darla R. Horn  
Jim & Suzanne Horstman  
David & Judi Hubert  
Ethel & Wayne Hubler  
Judy Hudgens  
Erica Hudnet  
D. S. Hudson, Jr.  
Helen Huff  
Mr. & Mrs. Carlton Hughes  
Ronald Ingles  
Mary Jane Inman  
Deborah Irish  
Lynn E. Irvin  
Vincent Iuliano  
Frances Jackson  
Dr. & Mrs. G. Keefe Jackson  
Karen & Lars Janson  
Melissa P. Jegers  
Kellie Jocoy  
Bob & Sarah Johnson  
Sandra L. Johnson  
Skip Johnson  
Ben Jones  
Marion Jones  
Mary Jeanne Jones  
Michael & Karen Jordan  
Bill & Ruth Jose  
Mindy Joy  
Dr. Marie G. Jureit-Beamish  
Leslie Kaler  
Thomas Kane  
Mr. & Mrs. Paul Karp  
Elaine Katz  
Pamela Kay  
Ellyn Kaye  
Rick & Sharon Kazdin  
Mr. & Mrs. Joseph L. Kelley  
Caron P. Kelly  
Caron Kelly Interiors  
Ned & Joyce Kenna  
Mrs. Doris Kesler  
Eugene Kiely  
Arnie & Charlotte Kihlmire  
Timothy Kinane  
Craig W. Kinne  
Al & Mary Kinzer  
Brendan Kirby  
Randall & Sylvia Klaker  
Susan Klein  
Tammy Klein  
Ron Klemencic  
William Klempner  
Mr. & Mrs. Robert Kloppenberg  
James & Laurel Knoska  
Patricia L. Koester  
Einer Konggaard  
John Kostun  
Mr. & Mrs. Philip Kron  
John & Christina Kruszewski  
Mr. & Mrs. John Kucyk  
Col. & Mrs. Nicholas Kuzemka  
Regina Kyle  
Ellie Lafer  
Charles A. LaForge Jr.  
Barbara LaMirand  
Oliveann Lancy  
Richard Landesman  
Bob Lang  
Richard & Rose Langbert  
Jefferson Lankford

George & Rigmor Olesen  
Al & Pat Olofsson  
Clifton & Barbara Olson  
Grant & Cindy Osborne  
Tony & Rose Oteri  
Alice Owen  
Robert & Inge Owens  
Terry Owens  
Ken & Janet Ozier  
Joseph & Margaret Palella  
Dr. & Mrs. Andrew K. Palmer  
Marjorie Parmenter  
Paul & Jean Pascarelli  
Mr. & Mrs. Vincent Pasquale  
Guy Passmore  
Elliot & Sheryl Paul  
Elliot Paul & Company  
Elaine Pearson  
Claudette A. Pelletier  
Mrs. Pat Pendergast  
Mr. & Mrs. Roy Peraino  
Grey & Trina Perna  
Marsha Petcove  
Nils Peterson  
Gene & Rilla Pfothenauer  
Linda L. Planty  
John Plavan  
Dr. & Mrs. Robert L. Polakow  
Gail & Leonard Polanski  
Jackie & David Polge  
Richard & Angie D. Pontynen  
Doreen Poreba  
Doug & Kathleen Powell  
Tara Powers  
Tracy & Theresa Pressner  
Sylvia Presto  
Paul & Elaine Puzzo  
Bea Radliff  
Mr. & Mrs. William Randall  
Jean Rappaport  
Dr. & Mrs. Michael Raskin  
Todd & Medora Reading  
John & Sally Reardon  
Alan L. Reed  
Joyce A. Reed  
Robert Renna  
Pattie & Charlie Restaino  
Joette & Terry Rice  
Carl Ritchey  
Mrs. Susan E. Ritchie  
Bill's B.S. Inc.  
Jon & Judy Robb  
Mark E. Robitaille  
Barbara Roetzel  
Dr. & Mrs. Harry Rohrer  
Stephanie & Bert Rosa  
Lee & Sally Dadko Rose  
Lloyd Ross  
Richard & Yvonne Ross  
Ravonne Ross  
Christine & David Rosso  
Anne Roth  
Mr. & Mrs. Vincent Rotondo  
Robert A. Rotundo  
Charles & Elizabeth Rowbotham  
Charles L. Rucquoi  
Helen Rudtke  
Daniel Ruiz  
Norma Rumbaugh  
James A. Ryan  
Dave O. Sabre  
Edward Saltzman  
Sally Batz & Henley Sandidge  
Robert Sanford  
Mrs. Judith L. Santiago  
Vincent Satter  
Donald & Leigh Savoy  
Joan Sayers  
Daniel Sayre  
Mrs. Helen Scelba  
Diane & Michael Schachter  
Susan Schieren  
Mr. & Mrs. Robert Schifffenhaus  
Peter & Susan Schlapkohl  
Anne-Marie Schmid  
Linda Schmidt  
James Schneider  
Dr. & Mrs. Steven Schnell  
Wayne & Patricia Schrader  
Charles D. Scott  
Charles & Dorothy Searle  
John & Helen Sebold  
Paul Seeley  
Jan-Clair Sellwood  
Evelyn & Bernard Sensale  
Michael & Denise Sessions  
Louis Sewell  
Mark Shaber  
Mr. & Mrs. Gregory M. Shapiro  
Rhonda Shear  
Roger Shephard & Sandra Krenn-Shephard  
Richard & Julie Shelby  
Mrs. Carolyn Sherin  
Frederick Shilling  
Al & Dottie Shine  
Mr. & Mrs. Lawrence G. ShROUT  
Marjorie Shuda  
Jeannie Silvester  
Arlene Simms  
Fred & Marilyn Simon  
Mr. & Mrs. William A. Slat  
Sara B. Sloan

Commissioner Doug Smith  
Ellen & Joseph Smith  
Joan C. Smith  
Joan & Reed Smith  
Robert W.D. Snyder  
Deena & Daniel Sokoloff  
Duane G. Sonneborne Jr.  
Jim Sopko  
Nancy Spector  
Joyce Stalhut  
Patrick & Lisa Standing  
Richard Starita  
Naomi Stark  
Mrs. Lou Stern  
George & Betsy Stewart  
James C. Stewart  
Susan & Frank Stifelman  
Barbara Stoner  
Charles & Joyce Strickler  
Jennifer Strube  
Stuart/Martin County Chamber of Commerce  
Mr. & Mrs. David Stuart  
Teri Studiale  
Rod W. Sturm  
Michael & Sue Stutzke  
Julie Gasbarri & Kevin Sullivan  
Arvid & Emily Sundquist  
Mr. & Mrs. Edward Sutton  
Amy Swenson  
James W. Swistock  
LeAnn Szymborski  
Davies & Gayle Tainter  
Mr. & Mrs. Kenneth Takacs  
Richard Talbot  
Mark Tarvin  
Mr. & Mrs. Frank Tasco  
Herb & Marge Taylor  
Nancyann Taylor  
Larry Tefft  
Mike & Judy Tenzyk  
Jean & Bob Terhune  
Marie Terry  
Deborah Textor  
Morton G. Thalhimer Jr.  
Bradley & Mildred Thayer  
Helen Tidgwell  
Paul & Carol Tierney  
Harry Tietjen  
Lavaughn Tilton  
Julie Timares  
Mary Ann Timmis  
Frederick H. Tingberg  
Joseph Topper  
Patricia Towers  
Karen Townsend  
Pellegrino J. Tozzo  
Mr. & Mrs. Joseph Trotta  
Ellen & Kenneth Tully  
Nancy Uliano  
Peter Upton  
Kathleen Uras  
Ellen Vadney  
Frank & Julia Valente  
Ann Valentino  
Mr. & Mrs. John Valentino  
Mr. & Mrs. Robert E. Valle  
Gene & Judy VanCuren  
Mr. & Mrs. Joseph Vannucci  
Joseph Vessely  
Nicki Van Vonno  
Michael & Anne Vinyon  
Betty Volkwein  
William & Patricia Wahl  
Sandra Walker  
Kathleen S. Wallace  
Jerome A. Wallenquest  
Robert & Judith Walters  
Barbara Warner  
Harvey & Lois Watson  
Jill Wattles  
Chris & Dona Waynt  
Jeff Webert  
Marvin Weiner  
Linda Rodney & Marc Weinstein  
Frank & Peggy Weis  
Susan R. Wertheim  
Louise Wheeler  
Richard & Beverly Whittington  
Mr. & Mrs. Lloyd Wieser  
Jim & Jan Wilds  
Craig Willert  
Garry Williams  
Dale A. Wilson  
Doug Winter  
Bill & Marnee Wirth  
Jane Witherwax  
Audrey Wolf  
Claire Woolley  
Chris Wright  
Mr. & Mrs. Stuart C. Wright  
Marge & Bob Wroble  
Nancy Wyant  
Rick & Cathy Yost  
Richard W. Young  
Terri Youngern  
Michael Zanakis  
Helen Zebrowski  
Mr. & Mrs. John C. Zimmerman  
Edward Zorn



# Theatre Box Office and General Information

## Hours

Regular Box Office hours are Monday thru Saturday from 10:00 a.m. to 4:00 p.m. We are also open two (2) hours prior to curtain on the day of a performance.

## Purchasing Flexibility

For your convenience, you can purchase tickets in several different ways:

- In person at the Box Office
- By phone at 772-286-7827
- Online 24/7 at [www.lyrictheatre.com](http://www.lyrictheatre.com)
- By mail to: Lyric Theatre, 59 SW Flagler Ave., Stuart, FL 34994

Attn: Box Office

Please be advised that a \$3.00 restoration fee is added to all ticket prices. This supports the preservation and restoration of our historic facility. The Lyric Theatre is listed on the National Register of Historic Places.

## Will Call

Prepaid tickets are available beginning one hour prior to each performance at the Box Office in the lobby.

Paid tickets can also be picked up in advance at any time the Box Office is open, or they can be mailed to you upon your request if there is ample time to do so prior to the performance date.

## Gift Certificates

Gift certificates can be purchased in any denomination and are good for any performance held at The Lyric Theatre. They are valid for one year from the date of the purchase. Gift certificates are not transferable, and

can only be redeemed by the person(s) for whom they are purchased. They are non-refundable and cannot be redeemed for cash.

## Ticketing Policies

The Lyric Theatre has a "No Refund, No Exchange" ticketing policy. At the discretion of management, exceptions may be made. In the event of a returned check, a fee of \$35 will apply.

## Box Office

Located outside the entrance to The Lyric on Flagler Avenue. We accept American Express, Visa, Discover and MasterCard for phone and online reservations; checks, cash and credit cards at the window. All reserved tickets are available from time of purchase up to one hour before the performance, when they may be picked up at our Will Call Booth in the center of the lobby.

## Photography/Recording

The use of any audio or visual recording device is strictly prohibited. Patrons may be asked to leave the Theater.

## Cell Phones/Pagers

Please turn off or put personal communication devices on silent mode prior to entering the Theater.

## Patrons with Disabilities

Special seating arrangements must be made with the Box Office at the time you purchase tickets, based on availability. Inner lobby restrooms are accessible.

## Latecomers

Performances begin at the advertised time. Please allow proper time for parking and collection of tickets. Latecomers will be seated at the discretion of management.

## Fire Notice

In case of fire, please walk to the exit nearest your seat.

## First Aid

Please see the House Manager.

## Smoking

Smoking is prohibited anywhere inside the Theater.

## Beverage Service

A full service cash bar is available in the lobby at most events.

## Restrooms

Located to the left and right of the theatre entrance in the lobby.

## Lost and Found

Contact the Box Office at 772-286-7827.

## Group Sales & Corporate Discounts

Discounts are available for groups and corporations of all sizes. Please contact the Box Office at 772-286-7827 or [LyricBoxOffice@LyricTheatre.com](mailto:LyricBoxOffice@LyricTheatre.com) for more details.

## Customer Service

If you have a suggestion or problem, please contact the Assistant Executive Director at 772-220-1942, ext. 207.

## Theater Etiquette

As a courtesy to the performers and other audience members, please do not leave your seat until the end of the act. If for some reason you must leave, please wait for a pause in the program.



# RECYCLE OFTEN. RECYCLE RIGHT.<sup>SM</sup>



Recycling isn't just a good thing, it's a growing thing. As North America's largest residential recycler, we managed nearly 14 million tons of recycled commodities in 2012 – and more than 775,000 tons in Florida alone.

Together, let's continue to recycle often ... and recycle right.

## RECYCLE OFTEN:



## Plastic Bottles & Jugs



## Glass Bottles & Jars



## Paper

Brown paper bags, office and school paper, newspaper, magazines and chipboard (cereal and cracker boxes)



## Metal Cans

Steel, tin & aluminum soda, vegetable, fruit & tuna cans

## RECYCLE RIGHT:



**Do not include:** plastic bags, plastic wrap, hoses, toys, plastic cups or plates, food contaminated paper plates, pizza boxes, cups, napkins, paper towels or tissues, polystyrene cups and food trays, needles or medical waste

**For more information on recycling right, call us at 800 824 8472.**

## Seating Chart

### STAGE

19

																																																																																																																																																																																																																																																																																																																																																																																																																																																																																																																																																																																																																																																																																																																																																																																																																																																																																																																																																																																																																																																																																																																																																																																																																																																																																																																																																																																																																																																																																																																																																																																												</
--	--	--	--	--	--	--	--	--	--	--	--	--	--	--	--	--	--	--	--	--	--	--	--	--	--	--	--	--	--	--	--	--	--	--	--	--	--	--	--	--	--	--	--	--	--	--	--	--	--	--	--	--	--	--	--	--	--	--	--	--	--	--	--	--	--	--	--	--	--	--	--	--	--	--	--	--	--	--	--	--	--	--	--	--	--	--	--	--	--	--	--	--	--	--	--	--	--	--	--	--	--	--	--	--	--	--	--	--	--	--	--	--	--	--	--	--	--	--	--	--	--	--	--	--	--	--	--	--	--	--	--	--	--	--	--	--	--	--	--	--	--	--	--	--	--	--	--	--	--	--	--	--	--	--	--	--	--	--	--	--	--	--	--	--	--	--	--	--	--	--	--	--	--	--	--	--	--	--	--	--	--	--	--	--	--	--	--	--	--	--	--	--	--	--	--	--	--	--	--	--	--	--	--	--	--	--	--	--	--	--	--	--	--	--	--	--	--	--	--	--	--	--	--	--	--	--	--	--	--	--	--	--	--	--	--	--	--	--	--	--	--	--	--	--	--	--	--	--	--	--	--	--	--	--	--	--	--	--	--	--	--	--	--	--	--	--	--	--	--	--	--	--	--	--	--	--	--	--	--	--	--	--	--	--	--	--	--	--	--	--	--	--	--	--	--	--	--	--	--	--	--	--	--	--	--	--	--	--	--	--	--	--	--	--	--	--	--	--	--	--	--	--	--	--	--	--	--	--	--	--	--	--	--	--	--	--	--	--	--	--	--	--	--	--	--	--	--	--	--	--	--	--	--	--	--	--	--	--	--	--	--	--	--	--	--	--	--	--	--	--	--	--	--	--	--	--	--	--	--	--	--	--	--	--	--	--	--	--	--	--	--	--	--	--	--	--	--	--	--	--	--	--	--	--	--	--	--	--	--	--	--	--	--	--	--	--	--	--	--	--	--	--	--	--	--	--	--	--	--	--	--	--	--	--	--	--	--	--	--	--	--	--	--	--	--	--	--	--	--	--	--	--	--	--	--	--	--	--	--	--	--	--	--	--	--	--	--	--	--	--	--	--	--	--	--	--	--	--	--	--	--	--	--	--	--	--	--	--	--	--	--	--	--	--	--	--	--	--	--	--	--	--	--	--	--	--	--	--	--	--	--	--	--	--	--	--	--	--	--	--	--	--	--	--	--	--	--	--	--	--	--	--	--	--	--	--	--	--	--	--	--	--	--	--	--	--	--	--	--	--	--	--	--	--	--	--	--	--	--	--	--	--	--	--	--	--	--	--	--	--	--	--	--	--	--	--	--	--	--	--	--	--	--	--	--	--	--	--	--	--	--	--	--	--	--	--	--	--	--	--	--	--	--	--	--	--	--	--	--	--	--	--	--	--	--	--	--	--	--	--	--	--	--	--	--	--	--	--	--	--	--	--	--	--	--	--	--	--	--	--	--	--	--	--	--	--	--	--	--	--	--	--	--	--	--	--	--	--	--	--	--	--	--	--	--	--	--	--	--	--	--	--	--	--	--	--	--	--	--	--	--	--	--	--	--	--	--	--	--	--	--	--	--	--	--	--	--	--	--	--	--	--	--	--	--	--	--	--	--	--	--	--	--	--	--	--	--	--	--	--	--	--	--	--	--	--	--	--	--	--	--	--	--	--	--	--	--	--	--	--	--	--	--	--	--	--	--	--	--	--	--	--	--	--	--	--	--	--	--	--	--	--	--	--	--	--	--	--	--	--	--	--	--	--	--	--	--	--	--	--	--	--	--	--	--	--	--	--	--	--	--	--	--	--	--	--	--	--	--	--	--	--	--	--	--	--	--	--	--	--	--	--	--	--	--	--	--	--	--	--	--	--	--	--	--	--	--	--	--	--	--	--	--	--	--	--	--	--	--	--	--	--	--	--	--	--	--	--	--	--	--	--	--	--	--	--	--	--	--	--	--	--	--	--	--	--	--	--	--	--	--	--	--	--	--	--	--	--	--	--	--	--	--	--	--	--	--	--	--	--	--	--	--	--	--	--	--	--	--	--	--	--	--	--	--	--	--	--	--	--	--	--	--	--	--	--	--	--	--	--	--	--	--	--	--	--	--	--	--	--	--	--	--	--	--	--	--	--	--	--	--	--	--	--	--	--	--	--	--	--	--	--	--	--	--	--	--	--	--	--	--	--	--	--	--	--	--	--	--	--	--	--	--	--	--	--	--	--	--	--	--	--	--	--	--	--	--	--	--	--	--	--	--	--	--	--	--	--	--	--	--	--	--	--	--	--	--	--	--	--	--	--	--	--	--	--	--	--	--	--	--	--	--	--	--	--	--	--	--	--	--	--	--	--	--	--	--	--	--	--	--	--	--	--	--	--	--	--	--	--	--	--	--	--	--	--	--	--	--	--	--	--	--	--	--	--	--	--	--	--	--	--	--	--	--	--	--	--	--	--	--	--	--	--	--	--	--	--	--	--	--	--	--	--	--	--	--	--	--	--	--	--	--	--	--	--	--	--	--	--	--	--	--	--	--	--	--	--	--	--	--	--	--	--	--	--	--	--	--	--	--	--	--	--	--	--	--	--	--	--	--	--	--	--	--	--	--	--	--	--	--	--	--	--	--	--	--	--	--	--	--	--	--	--	--	--	--	--	--	--	--	--	--	--	--	--	--	--	--	--	--	--	--	--	--	--	--	--	--	--	--	--	--	--	--	--	--	--	--	--	--	--	--	--	--	--	--	--	--	--	--	--	--	--	--	--	--	--	--	--	--	--	--	--	--	--	--	--	--	--	--	--	--	--	--	--	--	--	--	--	--	--	--	--	--	--	--	--	--	--	--	--	--	--	--	--	--	--	--	--	--	--	--	--	--	--	--	--	--	--	--	--	--	--	--	--	--	--	--	--	--	--	--	--	--	--	--	--	--	--	--	--	--	--	--	--	--	--	--	--	--	--	--	--	--	--	--	--	--	--	--	--	--	--	--	--	--	--	--	--	--	--	--	--	--	--	--	--	--	--	--	--	--	--	--	--	--	--	--	--	--	--	--	--	--	--	--	--	--	--	--	--	--	--	--	--	--	--	--	--	--	--	--	--	--	--	--	--	--	--	--	--	--	--	--	--	--	--	--	--	--	--	--	--	--	--	--	--	--	--	--	--	--	--	--	--	--	--	--	--	--	--	--	--	--	--	--	--	--	--	--	--	--	--	--	--	--	--	--	--	--	--	--	--	--	--	--	--	--	--	--	--	--	--	--	--	--	--	--	--	--	--	--	--	--	--	--	--	--	--	--	--	--	--	--	--	--	--	--	--	--	--	--	--	--	--	--	--	--	--	--	--	--	--	--	--	--	--	--	--	--	--	--	--	--	--	--	--	--	--	--	--	--	--	--	--	--	--	--	--	--	--	--	--	--	--	--	--	--	--	--	--	--	--	--	--	--	--	--	--	--	--	--	--	--	--	--	--	--	--	--	----

**Upper Balcony**  
**Lower Balcony**  
**Orchestra**  
**Wheelchair Accessible**

*Patrons with disabilities: Special seating arrangements can be made with the Box Office at the time you purchase tickets, based on availability.*

ELEVATOR





**TREASURE COAST DERMATOLOGY**  
Specializing in the Treatment of Skin Cancer

# TRUST US WITH THE HEALTH OF YOUR SKIN

*Our Board Certified Physicians are Here to Help.*

**TIM IOANNIDES, MD**  
Board Certified by the American Board of Dermatology

**CYNTHIA GOLOMB, MD**  
Board Certified by the American Board of Dermatology

Stuart    Port St. Lucie    St. Lucie West    Fort Pierce

**221.3330    398.8213    878.3376    464.6464**

**Accepting New Patients**    [www.TCDermatology.com](http://www.TCDermatology.com)



# DINNER AND A SHOW?

Since 1991 Luna has drawn an eclectic Downtown crowd. With its creative menu of mouth watering entrees, specialty pizzas, and those irresistible garlic knots, Luna knows how to satisfy all appetites and budgets.

*Salads • Antipasto • Entrees w/ White, Red & Marsala Sauces  
Baked Casseroles • Gourmet Pizzas*

**Mon-Thurs: 11:00am-9:00pm  
Fri/Sat: 11:00am-10:00pm  
Sun: Sidewalk Take-out window and outside tables open at Noon.  
Sun (Indoor Seating): 4:00pm-8:30pm**

EST. **LUNA** 1991

ITALIAN CUISINE

**49 Flagler Avenue, Downtown Stuart  
288-0550 | [www.LunaDowntownStuart.com](http://www.LunaDowntownStuart.com)**

*Italian cooking the old fashioned way from scratch everyday!*

"You don't have to venture far beyond the Lyric Theatre's front door to find one of the best Italian-American eateries in all of South Florida."  
**Palm Beach post 2008**

"A Stuart Landmark."  
**The Stuart News 2005**



**READERS' CHOICE  
BEST ITALIAN  
RESTAURANT  
GOLDEN FORK  
AWARD**



**Michael D. Dadko, CFP®**  
Vice President-Wealth Management  
Wealth Advisor  
[michael.dadko@ubs.com](mailto:michael.dadko@ubs.com)

**Diane M. Dadko, CFP®**  
Wealth Strategy Associate  
772-283-8201  
[diane.dadko@ubs.com](mailto:diane.dadko@ubs.com)

**ubs.com/team/sailfishwmg**

## Talent. It's our good fortune to witness it.

*Thank you, Lyric Theatre, for enriching our community.*

Please join us for an *Estate planning and wealth protection for Florida residents* seminar. Contact our team today at 772-283-8201 for details.

**Sailfish Wealth Management Group**  
712 South East Ocean Boulevard  
Stuart, FL 34994  
800-323-1139

LYRIC THEATRE DIRECTOR'S CIRCLE CONTRIBUTORS



Certified Financial Planner Board of Standards Inc. owns the certification marks CFP® and Certified Financial Planner™ in the U.S. ©UBS 2014. All rights reserved. UBS Financial Services Inc. is a subsidiary of UBS AG. Member FINRA/SIPC. FIDUCIARY ADVISORS

## The future of Stuart's Historic Showplace is brighter than ever these days and a big reason for this success is . . .YOU!

When you support The Lyric – by becoming a member, buying a sidewalk star, joining the Director's Circle or even sponsoring a show – you play a key role in bringing a diverse and exciting slate of world-renowned artists to the Treasure Coast. Your contribution is vital to underwriting The Lyric's daily operations and keeping ticket prices at popular levels. You're invited to play any of the following roles – or all of them!

### WHAT ROLE WILL YOU PLAY AT THE LYRIC?



#### BECOME A MEMBER

Becoming a Lyric member is easy and affordable - and it offers big benefits too! For as little as \$35, you can enjoy advance notice of upcoming events and have the chance to purchase tickets before the general public. Higher membership levels offer even more privileges.

#### BE A SIDEWALK "STAR"

Some of our brightest stars have provided \$1,000 in underwriting to support the restoration fund for Stuart's Historic Showplace. You'll find these "stars" right under your feet as you arrive at The Lyric! In recognition of your contribution you'll receive a bronze star embedded in the sidewalk at the Theatre's entrance with an inscription of your choice.

#### SPONSOR A SHOW

Individuals and businesses can literally get their names in lights when they sponsor a Lyric performance! As a show sponsor, you'll receive complimentary tickets with preferred seating and discounts on additional tickets. You may also help to introduce the artist and receive recognition for your sponsorship. Opportunities may also exist for a private "meet and greet" with the performers after the show. Sponsorships are an ideal way to entertain your clients or friends while providing favorable exposure for your business.

#### BE A DIRECTOR

Should you wish to provide ongoing financial support to the Theatre over a five-year period, you will become an honored member of the Lyric Director's Circle. Your generosity will be recognized through a prominent listing on the Donor Wall in the Theatre lobby as well as a listing in *the Lyric* magazine. You'll also receive invitations to special events and personalized concierge service at the box office.

**To become a Lyric Member, call Heather Long today at 772.220.1942, ext. 204 or visit [LyricTheatre.com](http://LyricTheatre.com).**

**To take part in one of our other great sponsorship opportunities, call the Executive Director's office at 772.220.1942, ext. 208**



style from its origins, with classic songs by the Crests and the Belmonts, to its contemporary variants, including music by Jason Mraz, Amy Winehouse, and Michael Jackson. Featuring some of Broadway's most promising young singers, *The Doo Wop Project* reimagines the doo wop of yesteryear while putting a nostalgic twist on today's pop hits.

Conceived backstage at the famous August Wilson Theatre, *The Doo Wop Project* features many of the current and former stars of some of Broadway's most popular musicals, including *Motown: The Musical*, *Beautiful*, and *Jersey Boys*. The young and talented cast cover a wide range of rock and pop pieces, from

in the entertainment industry both on and off the stage, creating a wonderful night of singing and storytelling.

*The Doo Wop Project* is a night dedicated to doo wop and its legacy, highlighting some of the most popular contemporary doo wop inspired hits, while still honoring its classic roots. Bridging generations of music, *The Doo Wop Project* brings one of the most durable and underrated American musical genres back to the forefront, inspiring listeners, young and old. This season at The Lyric Theatre, hear some of your favorite hits from Smokey Robinson, Jason Mraz, The Beach Boys, and many more.

Up next is  
**Best of Broadway presents "Broadway SHOWSTOPPERS!"**

(February 3<sup>rd</sup>, 2015: 7:00pm & February 4<sup>th</sup>, 2015: 4:00pm & 7:00pm). Embark on an emotional tour through the history of Broadway with the *Best of Broadway presents Broadway SHOWSTOPPERS!*, including selections from *The Producers*, *Chicago*, *Phantom of the Opera*, and many more. Starring Broadway veterans Diane Ketchie, Raymond Saar, Joan Ryan, and Scott Harlan, *Broadway SHOWSTOPPERS!* explores some of Broadway's largest productions and brightest stars. From the creators of *A Gershwin Celebration* and *Hooray for Hollywood* comes *Broadway SHOWSTOPPERS!*, an evening of magical Broadway classics from Andrew Lloyd Webber to Rodgers and Hammerstein.

Conceived and directed by Raymond Saar, *Broadway SHOWSTOPPERS!* is the latest production in the *Best of Broadway* series. Previous *Best of Broadway* productions include *The Best of Andrew Lloyd Webber* and *Hooray for Hollywood*. Saar's celebration of Broadway's most memorable musicals is performed by

an all-star cast, including Saar himself, who starred as Raoul in the San Francisco production of *Phantom of the Opera*. Saar also played Marius in the Broadway production of *Les Miserables*, later featured as one of the soloists on the international cast album. On television, Saar has appeared on *General Hospital*, *Good Morning America*, and *The Tonight Show with Johnny Carson*.

*Broadway SHOWSTOPPERS!* star Diane Ketchie made her Broadway debut in *Phantom of the Opera*. An accomplished concert pianist as well as a singer, Ketchie showcased her talents in the off-Broadway production of *Orpheus in Love* at the Circle Repertory Theatre. Joan Ryan is no novice in the theatre industry either, having starred in the original Los Angeles production of *Ruthless!* and recently named the Top Female Cabaret Artist of 2013 by Broadway World. In addition to her extensive Broadway experience, Ryan is beloved by television audiences around the world for her roles in such shows as *Saved by the Bell* and *The Young and the Restless*. Famous for his roles in major motion pictures such as *Risky Business* and *Power* with Richard Gere, Scott Harlan began his career on the Broadway stage, performing in the world premiere of *From the Top* with Carol Burnett. Harlan has also starred in the national company of *Rocky Horror Show*, as well as in the new musical production, *Radio Gals*.

Take the time out of your busy schedule this February to see **The Time Jumpers featuring Vince Gill, Dawn Sears, Kenny Sears and "Ranger Doug" Green** (February 5<sup>th</sup>, 2015: 7:00pm).

From their start at the intimate Station Inn in downtown Nashville to the main stage at Carnegie Hall, *The Time Jumpers* have swept the nation with their boot-stomping, heel-clicking Western style swing music. Featuring eleven members, including the 20-time Grammy-winning artist Vince Gill, *The Time Jumpers* are a group of top-dollar studio musicians looking to have a great time. The versatile swing ensemble has toured with some of the most successful country artists in recent memory, from Bonnie Raitt to Jimmy Buffett. *The Time Jumpers* includes 11 members, each a master of his (and, in one case, her) instrument. Alphabetically—which is the only diplomatic way to present such a phalanx of evenly matched talent—they are **Dennis Crouch** (upright bass), **Larry Franklin** (fiddle), **Paul Franklin** (steel gui-



The Time Jumpers featuring Vince Gill, Dawn Sears, Kenny Sears and "Ranger Doug" Green  
Feb. 5<sup>th</sup> | 7:00pm

tar), **Vince Gill** (vocals, electric and acoustic guitars), **"Ranger Doug" Green** (vocals, acoustic rhythm guitar), **Andy Reiss** (electric guitar), **Dawn Sears** (vocals), **Kenny Sears** (vocals, fiddle), **Joe Spivey** (fiddle, vocals), **Jeff Taylor** (accordion, piano) and **Billy Thomas** (drums, vocals).

Initially designed as a part-time hobby, *The Time Jumpers* were established in Nashville in 1998, comprised of a few country music veterans. Their extensive experience and youthful energy quickly brought them a group of devoted fans in the Nashville area, eventually expanding across the country. Their reputation spread, and soon major recording artists would stop by the Station Inn to play alongside the eleven member ensemble, including Kings of Leon, Norah Jones and Robert Plant. Although the lineup has changed over the years, *The Time Jumpers* have stayed devoted to providing quality swing music to audiences around the United States.

Their live album, *Jumpin' Time*, released in 2007, earned *The Time Jumpers* two Grammy nominations and a major segment on the NPR radio show *All Things Considered*. *The Time Jumpers'* success is due in part to their versatility. The swing group makes an effort to write songs that cover all facets of the human experience, from love, to mourning, to light-hearted shenanigans. *The Time Jumpers'* latest self-titled album marks their first studio project and indicates a new period in the group's artistic career. *The Time Jumpers'* recent success and growing fan base has made it impossible for the group to stay in the smaller Station Inn, and so the group has moved to the larger 3<sup>rd</sup> and Lindsley nightclub near downtown Nashville.

Be sure not to miss one of the most innovative dance companies in America this

winter when **Ailey II** (February 9<sup>th</sup> & 10<sup>th</sup>, 2015: 7:00pm) comes to town. Taking inspiration from the master of movement himself, Alvin Ailey, the *Ailey II* dance company strives to create community through dance. Celebrated as one of the most popular dance companies in the country, *Ailey II* represents the next generation of performative dance through their synthesis of traditional and contemporary choreography. In their latest world tour, *Ailey II* will be premiering two brand new ballets in their already expansive repertoire. Experience the unique vision and expression of the human body this February at The Lyric. Partial proceeds of the *Ailey II* performance this February will benefit the St. Paul African Methodist Church.

Under the direction of Troy Powell, the innovative dance troupe, *Ailey II*, have honed their craft, bringing genre-defying and boundary-changing performances to audiences across the United States. Since its inception in 1974, *Ailey II* has attracted some of the nation's brightest up-and-coming dancers of all backgrounds, establishing itself as one of the foremost dance companies in North America. This season, *Ailey II* introduces seven new dancers to their troupe, making this a fresh and exciting time for the innovative dance company.

The company's current repertoire, which is constantly being updated and reimagined, includes over 15 different choreographed performances. *Ailey II's* choreography is designed by some of the most visionary choreographers working today, including Amy Hall Garner, Robert Battle, Jennifer Archibald, and Adam Baruch, among others. For their 2014-2015 tour, director Troy Powell has commissioned two new ballets, *Breakthrough* and *Hissy Fits*, to be added to the company's ever-expanding collection. Dancer and choreographer Manuel Vignoulle's *Breakthrough* explores a world where connection seems impossible. Beautifully

blending European and American styles of dance, *Breakthrough* will be performed for the first time on the world stage by the talented Ailey II dance troupe. *Hissy Fits*, created by former Ailey star Dwight Rhoden, investigates the complicated nature of human relationships, set to the music of J.S. Bach. *Ailey II* pushes boundaries with every performance, inspired by the vision of Alvin Ailey, the former choreographer and activist who is credited in part with revolutionizing and popularizing modern dance. Partial Proceeds benefit The St. Paul African Methodist Episcopal Church.

For opera with a twist, don't miss **La Diva Tenors** (February 14<sup>th</sup>, 2015:

7:00pm). Unique for their blending of pop hits, Broadway tunes, and classical opera, *La Diva Tenors* are a four-person vocal ensemble, featuring the professionally trained voices of three powerful tenors and one beautiful soprano. *La Diva Tenors* have collaborated with some of the most respected artists in the business, such as Luciano Pavarotti and Plácido Domingo.

*La Diva Tenor's* Antonio Buonauro began his vocal studies as a young boy growing up in Europe. Buonauro later completed his training in the United States, attending the formidable Juilliard School and Mannes School of Music. The European tenor debuted with the New York Grand Opera, performing in Puccini's *Trittico*, which received stellar reviews from major critics including the *New York Times*. Since his debut, Antonio Buonauro has starred in a number of operatic productions, including *La Boheme*, *Rigoletto*, and *La Traviata*.

Tenor Thomas Bethman began his career on stage, performing as a child singer in community and regional theaters across the U.S., Asia, and Europe. He began his formal opera training at The Eastman School of Music, later continuing his studies at the Juilliard School. Since he began singing, Bethman has performed in 44 countries, an incredible feat for any musician. Over his career, Thomas Bethman has worked with a range of impressive conductors, including David Gilbert, Roland Fiore, and Alphonse Stephenson.

James Gafgen debuted in the New York production of *The Marriage of Figaro* as Don Basilio. He completed ten years of vocal training with the legendary vocal coach Louise Caselotti, who famously taught the American-Greek soprano Maria Callas. Since his opera debut, Gafgen has performed for four Governors, including Jim Florio and Arnold Schwarzenegger. James Gafgen also had the incredible opportunity to open for

continued on page 36

Ailey II  
Feb. 9<sup>th</sup> & 10<sup>th</sup>  
7:00pm





## Experience Inspires Trust

Providing guidance with Insurance for Estate Planning

- Wealth Replacement Strategies • 401K Rollovers and Retirement Income Planning

For Estates over two million dollars:

- Receive complimentary second opinion on your wealth replacement strategy and risk/reward portfolio analysis
- Receive a complimentary copy of "Who's sitting on your Nest Egg?" by Robin Davis

*Now is the time to meet with one of our associates and put our knowledge to work for you! Call for a complimentary consultation*

Allengang Entertainment Brings to THE LYRIC THEATRE

Jan 14, 2015 7:00 PM  
Tickets: \$38  
Call The Lyric Box Office (772) 286-7827

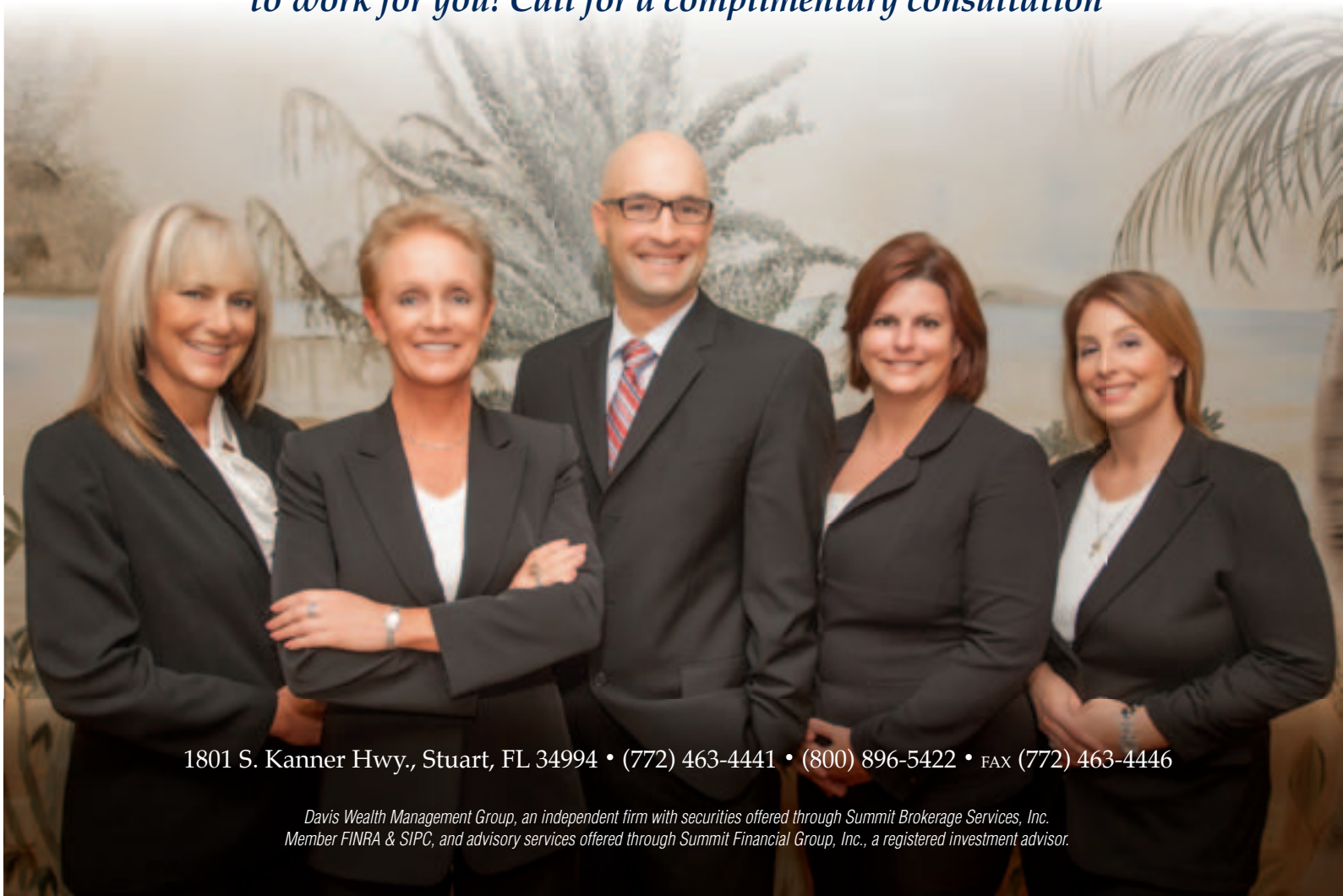
# THE LONG RUN

A TRIBUTE TO THE EAGLES

Feb 12, 2015 7:00 PM  
Tickets: \$38  
Call The Lyric Box Office (772) 286-7827

# Orlando Transit Authority

A TRIBUTE TO CHICAGO



1801 S. Kanner Hwy., Stuart, FL 34994 • (772) 463-4441 • (800) 896-5422 • FAX (772) 463-4446

Davis Wealth Management Group, an independent firm with securities offered through Summit Brokerage Services, Inc. Member FINRA & SIPC, and advisory services offered through Summit Financial Group, Inc., a registered investment advisor.



The Three Tenors Concert which featured Luciano Pavarotti, Plácido Domingo, and Jose Carreras in New Jersey.

Last, but certainly not least, is *La Diva Tenor's* soprano and resident diva, Donna Buonauro. Naturally gifted with a powerful voice, Donna Buonauro began performing at a young age, traveling across the country from New York to California. The talented soprano has extensive experience on the stage, both in an orchestral and Broadway context. Donna performed a beautiful rendition of "God Bless America" at Carnegie Hall in New York City in 2001 as a tribute to the victims of September 11<sup>th</sup>.

Back again this year is the beloved American entertainer and talented crooner

**Regis Philbin** (February 15<sup>th</sup>, 2015: 4:00pm & 7:00pm). The recognizable and beloved face of *Who Wants to be a Millionaire* and *Live! with Regis and Kelly*, Regis Philbin returns to The Lyric Theatre this season for another night of crooner classics. The multi-talented entertainer covers major hits by some of his favorite singers, including Frank Sinatra, Dean Martin, and Perry Como.

Regis Philbin recreates the magic of the big band era with songs such as "Pennies from Heaven" and "You Make Me Feel So Young" accompanied by an orchestra.

Regis Philbin has been entertaining since birth.

Growing up in the Bronx, Regis began working in the enter-

tainment industry behind the scenes starting in the 1950s. His first big break was in 1962, when the Hollywood legend became an announcer on the *The Tonight Show*. A natural with words, Regis Philbin got his own talk show *The Regis Philbin Show* in San Diego, California, and later experienced his first major national exposure as Joey Bishop's partner on the 1967 show *The Joey Bishop Show*. The rest is history, as Regis Philbin became the most sought after host in the industry. Most recently, Regis has co-hosted the wildly popular talk show *Live! with Regis and Kelly*. For all of his time on television, Philbin has set the Guinness World Record for "Most Hours on Camera" with over 16,000 hours!

In addition to his role as a talk show host, Regis Philbin has also enjoyed great success as a game show host for a number of television series, including the long-running *Who Wants to be a Millionaire* and the first season of *America's Got Talent*. After Dick Clark's retirement in 2004, Regis replaced the legendary announcer's role as host for the *ABC New Year's Eve* special.

Regis Philbin has a way with words, both spoken and sung. His career as a musician and recording artist began in 1968 with the release of his first album, *It's Time for Regis!*. After 36 years away from the studio, Regis returned to record another album in 2004 entitled *When You're Smiling*. Thankfully for us, Regis decided to continue his music career this time around, performing his signature crooning style for sold-out audiences across the country. His 2005 Christmas album featured guest performances by some of Regis' closest friends, including Donald Trump and Steve Tyrell. This February, Regis will return to The Lyric Theatre for another magical night of music and song.

Attention all blues aficionados! Up next is **John Hammond** (February 19<sup>th</sup>, 2015: 7:00pm). Grammy-nominated blues musician, John Hammond, arrives at The Lyric Theatre this February for an evening of soulful renditions of timeless blues classics. Heralded by the *New York Times* as a "blues legend with a voice like Robert Johnson's," Hammond reinterprets some of the blues' most venerated compositions with originality and intensity. His raw, live performances showcase the musician's genius combination of gritty vocals, slide guitar, and accompanying harmonica.

Born in New York City, John Hammond felt an immediate attraction to music, and specifically the guitar, as the son of the successful record producer John H. Hammond.

With dreams of becoming a traveling blues singer, Hammond envisioned himself as a "one man, one guitar" kind of musician. Hammond, inspired by the music of Chuck Berry and Robert Johnson, quickly taught himself the guitar and continued his lessons through high school and college. By the 1960s, John Hammond was touring nationally and recording with a number of famous electric blues musicians in the New York area, including Eric Clapton and Jimi Hendrix. In fact, John Hammond has been credited with giving major recording groups such as The Band and Jimi Hendrix wider recognition.

Now, over 50 years since his first album debut, John Hammond has released over 34 albums and continues to tour tirelessly across North America. Hammond's work has received both popular and critical acclaim across the world. The blues veteran has been nominated for four Grammy awards and received the 1985 Grammy award for his performance of "Blues Explosion," which featured Steve Ray Vaughan, Koko Taylor, and many others. In 2011, Hammond was inducted into the Blues Hall of Fame. His newest album, entitled *Timeless*, celebrates his artistic milestone of reaching 50 years in the music industry. The album was recorded live at one of John Hammond's favorite venues in the world, Chan's in Woonsocket, Rhode Island.

Coming up next is the Serbian blues guitarist **Ana Popovic** (February 22<sup>nd</sup>, 2015: 7:00pm). Popovic is back again and better than ever. Nominated for four Blues Music Awards in the last two years, Popovic is quickly taking the American music scene by storm with her gritty vocals and impeccable blues guitar techniques. Since the debut of her latest album *Can You Stand the Heat*, Ana has performed over 130 shows all across the world from Canada to Japan, amazing audiences with her fresh take on the blues genre.

Born in Belgrade in 1976, Ana Popovic started playing the guitar at the age of 15. Actively encouraged by her father to embrace the blues genre, Popovic impressed local artists and music teachers with her innate abilities and creativity. In 1995, Ana formed the R&B group Hush, which marked the young guitarist's first experimentation with touring and performing. The group disbanded in 1998 when Ana went to the Netherlands to study jazz guitar. It was in 1999, after the formation of the Ana Popovic Band, that the blues musician really began to draw international attention. By 2009, Popovic had released the albums *Still Making History* and *Blind for Love*, which both reached #1 on the

continued on page 39



Thomas Schmitt, Esq.



Lauri J. Goldstein, Esq.



Kelly Cambron, Esq.

WORKING HARD FOR THE INJURED

*gs*



www.femaleinjurylawyer.com

For over 20 years, our compassion for our clients and knowledge of the law has helped thousands receive the verdicts and settlements they were entitled to.\*

Our staff is ready to help you and our attorneys are waiting to put 100 years of combined legal experience to work for you.

**Speak directly to an attorney NOW!**  
**24/7 Emergency Cell Line**  
**772-214-6464**



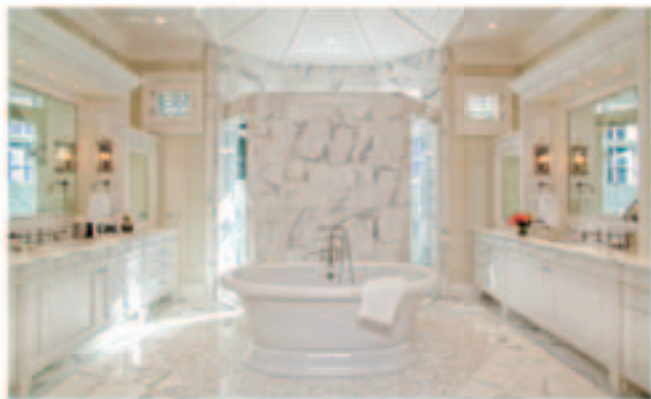
**GOLDSTEIN,  
SCHMITT &  
CAMBRON, PL**

\*Results may not be typical. You may not have as beneficial a result.

Personal Injury • Wrongful Death • Workers' Compensation • Social Security Disability/SSI

1330 S.E. Federal Hwy. • Stuart, FL 34994 • 772-222-2222





Your 1,000 words go here.

*Dream. We Build.*

Signature Commissioned Estates | Renovations | Additions  
Palm Beach Gardens, Florida | 561.775.5882 | keatingmoore.com



*Is it time to ask for help  
with your loved one?*

**We provide excellent in-home health care services to  
help you and your loved one live a better, healthier life.**

- Live-in & companion help
- Certified Nurses Assistants & Home Health Aides
- Long term care insurance accepted
- Mobility assistance & transfers
- Peace of mind and freedom for you
- Personalized in-home care
- RNs & LPNs
- Unique Alzheimer's Assistance Programs
- Wound care

Depend On Our Experience For The  
Finest Personal Home Health Care  
Our Caregivers Are Insured



The Area's Leader in Individual Eldercare

**Champion**  
Home Health Care

NR30211392

Serving Jupiter & Stuart  
**561-748-7118**  
**772-287-5432**  
www.championhome.com

continued from page 36

U.S. *Billboard* Blues chart.

Ana Popovic's latest album, *Can You Stand the Heat*, was named *USA Today's* Pick-of-the-Week and was prominently featured on National Public Radio. Always pushing boundaries, Ana has continued to develop her skills and vision, recently announcing her latest musical project, "Ana Popovic & Mo' Better Love," at the 2013 New Orleans Jazz Fest. Most recently, Ana has been invited to play in the Experience Hendrix Tour of 2014, which plans to celebrate the music and legacy of the legendary guitarist. Back at The Lyric Theatre for a second time, Ana Popovic is sure to bring the best that blues has to offer.

This February, don't miss **More of Loesser** (February 23<sup>rd</sup>, 2015: 6:00pm & 8:30pm). If you know "Baby It's Cold Outside" or "Luck Be A Lady," then you know Frank Loesser. As the musical genius behind some of Broadway's most treasured musicals including *Guys and Dolls* and *How to Succeed in Business Without Really Trying*, the Pulitzer Prize-winning composer has delighted audiences for over 70 years with his impeccable wit and memorable melodies. Directed by Barry Day and starring Billy Stritch and Klea Blackhurst, *More of Loesser* presents some of Frank Loesser's lesser known works including the composer's collaboration with such musical legends as Hoagy Carmichael and Burton Lane. Discover the side of Frank Loesser you never knew in this all-encompassing musical revue.

Devised by Barry Day, *More of Loesser* explores the life and art of one of the most celebrated Broadway composers of all time. From his time in the Air Force to his first Broadway composition, *Where's Charley*, *More of Loesser* takes you through every facet of Frank Loesser's career. With an incredible resume of over 700 composed tunes over his lifetime, there is always a new Loesser song to discover. The musical revue stars the Grammy-winning composer and musical director Billy Stritch, whose performance in the Broadway revival of *42<sup>nd</sup> Street* earned him widespread critical acclaim. An incredible actor as well as a composer, Billy Stritch is joined by actress Klea Blackhurst. Blackhurst's production *Everything the Traffic Will Allow*, a tribute to the great Ethel Merman, was named one of the top show albums of 2002 by *Talkin' Broadway.com*. Also starring in *More of Loesser* are the accomplished actor, pianist, and singer Eric Yves Garcia as well as one of the top cabaret performers in New York City, Marissa Mulder.

*More of Loesser* combines all of the dif-

ferent periods of Frank Loesser's career into a single night of showtunes, duets, and ballads. Performed by a talented cast of actors and musicians, this Frank Loesser revue show is a perfect opportunity to learn all there is to know about one of America's most treasured composers. Whether you're a Broadway fanatic or novice, *More of Loesser* will leave you whistling and humming your favorite tunes of the night.

Returning to The Lyric Theatre this season is the always fabulous Savion Glover in his latest, and most extensive production:

**Savion Glover's SoLe Sanctuary** (February 24<sup>th</sup>, 2015: 7:00pm). *SoLe Sanctuary* represents the culmination of Glover's illustrious career as a tap dancer, choreographer, and educator. In this career-defining performance, Savion Glover honors the history and development of tap with a rhythmic and expressive production described by the *New York Times* as a "deeper exploration of the idea of a dancer as an instrument."

Often labeled as the best tap dancer alive, Savion Glover learned to dance from the equally legendary dancer Gregory Hines. Glover is famous for his signature dance style in which he gradually deconstructs traditional tap dancing moves throughout his routines,



Savion Glover's SoLe Sanctuary  
Feb. 24<sup>th</sup> 7:00pm

incorporating more innovative steps as the routine continues. Aside from his talent as a dancer, Savion Glover is equally talented as a choreographer, having designed a number of his own routines as well as creating his own dance company called "NYOTs" or "Not Your Ordinary Tappers." Glover has appeared in films such as *Tap* starring Gregory Hines and Sammy Davis, Jr. and *Bamboozled*, directed by Spike Lee. Most recently, Glover choreographed dance sequences for the Academy Award-winning films *Happy Feet* and *Happy Feet 2*. In 1995, Glover provided choreography for the critically-acclaimed Broadway musical *Bring in 'da Noise, Bring in 'da Funk*, which explored the history of blacks in America through the art of tap.

In many ways, *Savion Glover's SoLe Sanctuary* is a continuation of *Bring in 'da Noise, Bring in 'da Funk's* dedication to exploring the history of American blackness through dance, a topic that Glover has dedicated himself to over his entire career as a musician. A thoughtful meditation on the dancer's personal experience with tap and on dance in general, *Savion Glover's SoLe Sanctuary* is set in front of a somber backdrop of photos featuring the forefathers of tap. Glover dances to an eclectic soundtrack, which includes New Age ethereal tracks as well as recordings of jazz great John Coltrane.

And, finally, The Lyric welcomes **Sarge** (February 27<sup>th</sup>, 2015: 7:00pm) back to the stage for another side-splitting night of comedic gold. With a brand of humor perfect for every audience, Sarge has been compared to the comedian great Don Rickles for their shared fast, improvisational style. Sarge has opened for some of the biggest names in show business, from The Beach Boys to Wayne Newton, and has kept people coming back to hear his unique blend of comedy, singing, and piano playing.

Sarge was born in Florida during the 1960s to a Jewish mother and Black father, but was raised by his adoptive parents in Long Island, New York. During his formative years, the comedian struggled with drug abuse and lived a short period of time without a home. Eventually, Sarge quit his addiction and turned his life around, focusing his efforts on becoming a professional comedian. His struggles as a young adult greatly influenced his choice to pursue a career in comedy, demonstrating to Sarge the therapeutic effect comedy can have.

With his natural wit and knack for comedic timing, it didn't take very long for Sarge to make it in the entertainment industry. In the early years of his career, Sarge wrote, produced, and performed for Fox Network's popular *Best Damn Sports Show Period* and worked as a syndicated radio host for Fox Sports Radio. The multi-talented comedian has brought his act to audiences across the country and around the world, from a packed crowd in Radio City Music Hall to soldiers in Iraq. In his performances, Sarge incorporates song into his comedy routines, often doing impressions of famous crooners including Harry Connick, Jr. and Lionel Richie. Recently, Sarge performed at the 6<sup>th</sup> Annual MusiCares MAP Fund Benefit Concert and also appeared in The Lyric's presentation of *Guys and Dolls In Concert*, in the role of Nathan Detroit, this past season.



## Final Chapter.



*Close the book with certainty.*  
Estate & Trust Planning

**BF BOYES & FARINA**

561.694.7979 | boyesandfarina.com | info@boyesandfarina.com | **Leverage. Insight.**

ESTATE & TRUST PLANNING | U.S. TAX COURT LITIGATION | INTRA-FAMILY DISPUTE RESOLUTION ESTATE & TRUST LITIGATION  
FIDUCIARY LITIGATION | GUARDIANSHIPS | BUSINESS LITIGATION

**Top Drawer**  
Est. 1980 Boutique  
A True Fashion Experience



Stuart • Cedar Pointe Plaza • 2861 SE Ocean Blvd. • 772.287.2845 • Mon.-Sat. 9:30-5:30 • topdrawerfl.com

## Sailfish Point

- ★ Championship Jack Nicklaus "Signature" Golf Course with NO TEE TIMES, Holes Along the River & Ocean
- ★ Driving & Practice Ranges
- ★ World Class Armed Security
- ★ Yacht Club
- ★ Marina Accommodates up to 125 Foot Yachts
- ★ Award Winning Fine & Casual Dining
- ★ Complimentary Coffee & Pastries
- ★ Community Feel with Friendly Neighbors
- ★ Fitness Center
- ★ Lighted Tennis Courts
- ★ Library

- ★ Complimentary Concierge
- ★ Helipad
- ★ Minutes to Private Airport
- ★ Miles of Uncrowded Secure Beaches
- ★ Spa & Salon
- ★ Peace, Tranquility & Privacy!

*Live your  
dreams  
awake!*

*The Stracuzzi Family*



*Relax, you'll be treated  
like family!*

I invite you to discover my island community, Sailfish Point, southeast Florida's

*"best kept secret"*

As a resident of this amazing community, there are times I feel that I am living in "Heaven on Earth."

It is priceless knowing the community offers the finest in world class security and the utmost in personal privacy for my family. Come discover this paradise with its rare combination of miles of the most beautiful private beach and protected deep water full service Marina to accommodate a 100' yacht with easy access to the ocean offering world class fishing.

I feel blessed to be part of this 532 acre sea island member only community. With only 520 residences, my family has been welcomed by the friendliest neighborhood we have ever experienced.

*Live the life you  
deserve!*

Everyday my wife and I feel blessed to live our life awake while in our dreams. It would be my pleasure to share my community, Sailfish Point.



Patrick Stracuzzi  
Real Estate Consultant

772-486-7856 CELL



11. SANTUARIO! Magnificent oceanfront masterpiece! On approximately two acres! \$20,000,000



Oceanfront estate! 13,804 sq ft estate on over an acre with 150+ ft of beach frontage! \$7,900,000



La Rotonda! Oceanfront estate! 13,296 sq. ft. estate, 7 suites & 9.5 baths. \$6,500,000



Situated on the bluest of waters, at the St. Lucie Inlet where the river & Atlantic Ocean merge! \$3,895,000



Panoramic wide spans views of the harbor on one of the largest lots in Sailfish Point. \$2,995,000



Situated on one of the finest deep water lots. 46ft lap pool & spectacular views of the harbor. \$2,200,000



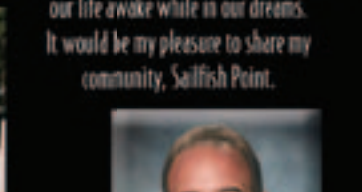
Gorgeous estate located on 14th fairway! Gourmet kitchen! Pool & spa & enjoy ocean breezes! \$1,395,900



"Estate" golf course home, 5,000 A/C sq ft! SE Exposure! Spectacular golf & lake views! \$1,050,000



Largest available condominium! Over 2,900 A/C sq ft, 3 bed/4 bath corner end unit! \$895,000



Best value single family home for the money! SE exposure! Impact windows! Furnished! \$729,900

**WWW.STRACUZZI.COM**  
**Patrick Stracuzzi**  
REAL ESTATE TEAM **RE/MAX of Stuart**

**772-283-9991**  
2895 SE Ocean Blvd., Stuart, FL 34996





**OVER-THE-TOP**  
 BORODIN | SMETANA | WAGNER | BORODIN | MAHLER | SMETANA | WAGNER

**TREASURE COAST YOUTH SYMPHONY**

**SPRING 2015 CONCERTS**

**April 13**  
 Lyric Theatre

**April 20**  
 Eissey Campus Theatre

**April 27**  
 Church of the Good Shepherd

*educating to preserve, create, and celebrate our musical heritage*  
[www.treasurecoastyouthsymphony.com](http://www.treasurecoastyouthsymphony.com) | [info@treasurecoastyouthsymphony.com](mailto:info@treasurecoastyouthsymphony.com)

Chabad Jewish Center of Martin / S. Lucie Presents:

Golden Globe & Emmy Award winning drama  
**RAID ON ENTEBBE**

The story of the miraculous most successful hostage rescue in history of over 100 Jewish hostages from the hands of terrorist hijackers.

Followed by participating elite IDF commando Sassy Reuven who will share a first-hand account.

At the Lyric Theatre  
**SUNDAY FEBRUARY 8, 3:00 PM**  
 Private Reception for sponsors to follow

Golden Globe & Prime Time Emmy Award winning drama RAID ON ENTEBBE Peter Finch, Charles Bronson and Yaphet Kotto star in this docudrama about the 1976 Air France plane hijacked by Palestinian and German terrorists and forced to land at Uganda's Entebbe Airport where the local government and its military supported them. The hijackers separated the Israelis and Jews from the rest of the hostages who they let go. The more than 100 Israeli and Jewish passengers were kept hostage and threatened to be killed unless Israel released many terrorist prisoners. It's a story of Israel's courage and sacrifice for the safety and freedom of Jews.

The film will be followed by a firsthand account from Sassy Reuven a veteran of the Israel Defense Force elite "Red Beret" paratrooper unit and many covert counter terror operations, who participated in the famed Entebbe rescue mission.

The event is a benefit event for the Chabad Jewish Center of Martin/S. Lucie, a nonprofit community based organization dedicated to enriching Jewish life with innovative educational, religious and social programming for adults and children and helping all in need from seniors to children. The center is a non-membership based organization supported by the generosity of the community and open to all regardless of background and observance, affiliation or finances.

At the Lyric Theatre Sunday February 8, 3:00 PM  
 Private Reception for sponsors to follow  
 For tickets call the Lyric Box Office at (772) 286-7827 or go to [LyricTheatre.com](http://LyricTheatre.com)

Chabad Jewish Center of Martin / S. Lucie  
 2809 SW Sunset Trl | Palm City, FL 34990  
 (772) 288-0606 [www.chabadmsl.com](http://www.chabadmsl.com)

**TAKE CENTER STAGE**  
*With Artistic Results That Enhance Your Beauty*

Facial Rejuvenation  
 Breast Enhancement  
 Body Contouring  
 & CoolSculpting®

Your Complimentary  
 Consultation Awaits...

**The Art of Plastic Surgery**  
**JOHN B. FASANO, MD**  
 509 RIVERSIDE DR., SUITE 206, STUART  
[WWW.JOHNFASANOMD.COM](http://WWW.JOHNFASANOMD.COM) • 772.221.9111

AMERICAN SOCIETY OF PLASTIC SURGEONS





SHORT RIB CREPE OSCAR  
*Slow roasted short ribs, jumbo lump crab  
 and tarragon bearnaise*

## SOUTHERN STEAK & SEAFOOD

*"Where casual meets upscale"*

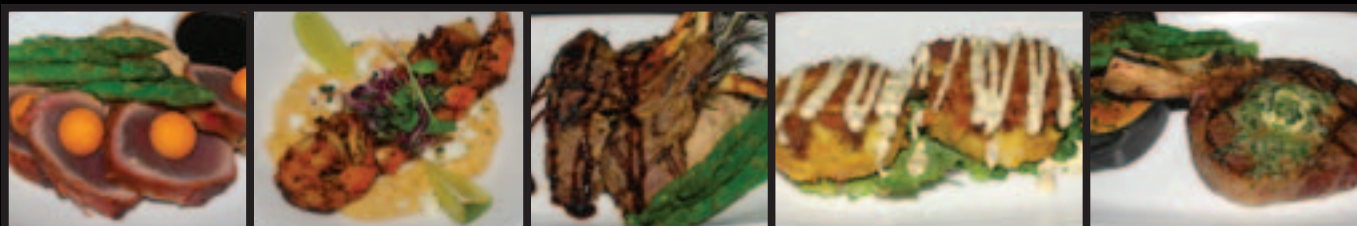


*Just steps away from The Lyric Theatre in Downtown Stuart*

**Tuna and 'Tini Tuesday** \$5.00 House Martini's and \$5.00 off of Ahi Tuna Tartare with Guacamole.

Happy Hour Daily from 4:00 – 7:00 in the bar

**Daily Specials | Local "Fresh" Farm Ingredients | Family-Owned: Executive Chef Taylor**



47 SW Flagler Avenue, Stuart, FL 34994 | Phone (772) 221-9517 | [www.thegafford.com](http://www.thegafford.com)