

theLYRIC

Spring 2016



LAW OFFICES OF BONNIE A. BROWN

514 Colorado Avenue | Stuart, Florida 34994

(772) 221-9024 | FAX: (772) 221-9086

www.bonnieabrownpa.com | info@bonnieabrownpa.com



REAL ESTATE LAW

- Residential & Commercial
- For Sale By Owner
- Business Acquisitions & Sales

ESTATE PLANNING

- Last Will & Testament
- Living Trust
- Durable Power of Attorney
- Living Will
- Health Care Surrogate

PROBATE

- Summary Administration
- Formal Administration



Letter from the Artistic & Executive Directors



WOW, are we celebrating! 90 years old, about to burn our mortgage and a roast to give me all I deserve.

Our Lyric turns 90 this March and we're celebrating all she's become. A beautiful lady in great shape having the best time with many shows selling out and becoming debt free - and it's because of you, our patrons and donors who are making it happen.

On March 3rd we are celebrating the 90 years with a benefit auction to help continue the support we always need, and along with that, the opportunity to roast me and hopefully raise more funds to keep us in good shape. Then, on March 6th for those of you who are Lyric members, join us in a Burn the Mortgage Party.

What a year, and thank you.

Best,

John Loesser

For 90 years, The Lyric Theatre has played a leading role in bringing quality entertainment to the Treasure Coast. Built in 1925, and opening on March 15, 1926 as a silent movie house with a small stage for vaudeville acts, the historic Lyric Theatre represented the grandiose aspirations of Florida's 1920s architectural boom.

Over the years, The Lyric was used for a variety of purposes, including "talkies" (talking pictures which debuted at The Lyric in 1930), vaudeville acts, and as a center for community groups and organizations as a place for entertainment and culture. The Theatre was purchased in 1978 by a church and used as a venue for its weekly services. By 1987, the church had plans to move, and there was talk of razing The Lyric to make room for new offices and shops.

Thankfully, a group of community-minded citizens came together to form Friends of the Lyric, Inc. and purchased the property on March 18, 1988, and used the restoration as the cornerstone for the revitalization of historic Downtown Stuart. With assistance from community grassroots efforts and grants, The Lyric underwent much needed repairs and on November 12, 1993 The Lyric Theatre was listed on the National Register of Historic Places.

With continuing renovation and upgrades, including an expansion to enlarge the stage and provide a backstage in 2005, The Lyric was able to begin to offer a wider range of performances from full scale orchestras to dance companies.

In the summer of 2014, again with the support of YOU, the community, donors and patrons, The Lyric underwent substantial renovation as part of the Love The Lyric Capital Campaign protecting the historic theater for another 90 years.

A standing ovation is owed to YOU for the 90 years of continued support in helping to keep The Lyric as a unique and intimate performing arts center and catalyst for economic growth and culture on the Treasure Coast.

Thank you!

Kia Fontaine

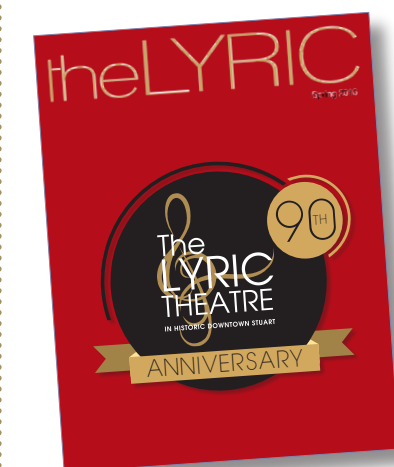
The Lyric Theatre's Mission

"To provide the community with a home for the performing arts that entertains, educates, and stimulates the growth of artistic integrity and experience for everyone."



Features

- 3 Letter from the Artistic Director & Executive Director
- 4 Board of Directors & Staff
- 6 Celtic Nights & All That Jazz
- 10 Historical Timeline
- 15 Volunteer Bartenders & Ushers
- 18 2015-16 Season Lineup
- 20 2015-16 Director's Circle & Contributors
- 22 Theatre Box Office & General Information
- 22 Seating Chart
- 28 Battle of The Bands
- 30 Lyric's Awesome! Summer Camp
- 34 The Lyric Theatre's 90th Birthday Celebration



On the cover:

The Lyric Theatre's 90th Birthday Celebration Auction & Roast of John Loesser starring Freddie Roman and Steve Solomon. Hosted by Jim Brochu with surprise celebrity appearances. See page 34.

SEASON SPONSORS

The Friends of the Lyric, Inc. would like to thank these sponsors who have generously helped to underwrite the costs of our 2015-2016 Season.

the **Espresso**

DOWNTOWN APARTMENT MANAGEMENT LLC
—Marie and Michael Braid—

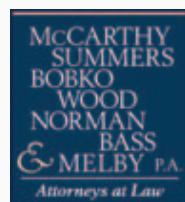


Leighton
Transportation

WQCS 88.9
NPR for the Treasure Coast



SeacoastBank



Oculina Bank
"The Friendly Bank"



Board of Directors

President Emerita
Ethel Christin

President
Patty Downing

Vice President
Stephen Fry
May Smyth

Treasurer
Todd Laycock

Secretary
Linda Weiksnar

Directors
Priscilla Baldwin
Frank M. Byers, Jr.
Betsy Herold
Hope Jochem
Stacey Levy
Steve McGovern
Joan McGowan
Rachel Scott
Paul Shirley
Olene Stuart
Nancy Wong

Advisory Board

Daisy Carter
Elaine Cook
Howard Cook
Marianne Hartnett
Elisabeth Lahti

Natalie MacDonald
Pat Pendergast
Patricia Simmons
Gloria Wolfe

Artistic Director
John Loesser

Executive Director
Kia Fontaine

Lyric Theatre Staff

Controller
Monica Soricelli

Director of Development
Linda Prange

Membership Director & Volunteer Coordinator
Heather Long

Production & Stage Manager
Savannah Richmond

Education Director
Karin Leone

Facilities Director
Tom Wiegierink

Box Office Manager
Meagan Ebright

Assistant Box Office Manager
Susan Nauss

Accounting Assistant
Kellie Jocoy

Art Director
Michael Renfro

Manager of Bar Services
Mitch Meislohn

Box Office Services
Sheila DeRigo,
Wendy Lucas,
Diane Meislohn and
Michael Soricelli

House Managers
Jean Aukerman,
Ron Colangelo,
Lauran Griffith,
Linda Lambrecht,
Irene Luneski and
Phyl Weaver

Copywriter & Creative Services
Gracie Loesser

House Physician
Richard D. Loew, D.O.

Legal Advisor
Terence P. McCarthy

B|A

BRUCE R. ABERNETHY, JR.
ATTORNEY AND COUNSELOR AT LAW

FLORIDA BAR BOARD CERTIFIED IN:
WILLS, TRUSTS, AND ESTATES

MASTERS DEGREE IN TAX LAW (LLM TAXATION) • FORMER PRACTICING FLORIDA CPA

- Estate and Business Planning
- Asset Protection Planning
- Estate, Gift, & Generation Skipping Tax Minimization Planning
- Charitable Gift Planning
- Trust and Estate Administration

32 YEARS OF EXPERIENCE

PLANNING, PROTECTING,
PROBLEM SOLVING...

PROVIDING PEACE OF MIND



P: 772.489.4901 | F: 772.489.4902

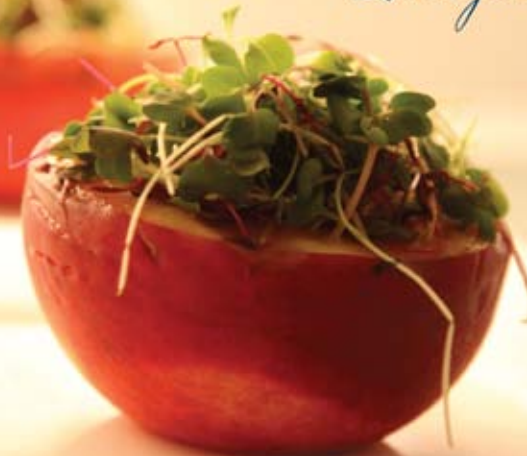
130 S. Indian River Drive, Suite #201 Downtown Fort Pierce, FL 34950

www.BruceAPA.com

BAbernethy@BruceAPA.com

BE A GUEST
AT YOUR
OWN PARTY!

Chef
Melissa
Major



"JUST THE STYLE AND CONTENT WE NEEDED! OUR GUESTS AND I WERE VERY PLEASED. THANK YOU!" - PHYLLIS RAPPAPORT

HORS D'OEUVRES TO DESSERTS • PERSONAL CHEF • SPECTACULAR PRESENTATIONS
PERSONAL HEALTHY NUTRITIONAL MEALS

772.418.2178 • CHEFMELISSAMAJOR.COM

EAT GREAT. FEEL GREAT. LOOK GREAT. FOOD

**CELEBRATING 16 YEARS
IN DOWNTOWN STUART**



READER'S CHOICE "BEST LUNCH"

Breakfast, Lunch & Dinner
Beer & Wine
Dog friendly outdoor dining
283-6616

OSCEOLA STREET
Cafe

26 Osceola St., Stuart, FL

CELTIC NIGHTS & ALL THAT JAZZ

Spring has arrived! The flowers are blooming, and so is the talent here at The Lyric Theatre. We have a truly international line-up for you, with comedy, music, and entertainment all the way from Mexico City to Wellington, New Zealand.

Kander & Ebb...And All That Jazz
Mar. 8th 2016 | 6:00pm & 8:30pm

Starting off the month of March is comedian **Steve Solomon** (March 1, 2016: 7:00pm). Back again, and better than ever, Solomon returns for another night of side-splitting comedy. As the creator and star of the three-time award-winning Broadway comedy *My Mother's Italian, My Father's Jewish, and I'm in Therapy*, Steve Solomon has won the hearts, and guts, of audiences across America with his witty one-liners and incredible collection of voices.

Raised in Sheepshead Bay, New York, Steve Solomon has drawn on his life in the Big Apple and experience in the entertainment industry to create a one-man show like no other. Solomon has traveled to over 75 cities and three countries in the past four years, sharing stories of his dysfunctional family to audiences all over the world. His ability to imitate a variety of voices and incorporate strange and unique sound effects into his comedy routine has earned him a loyal, and deserved, following of fans across the country.

In his performance at The Lyric Theatre this season, Steve Solomon will combine elements from many of his most popular shows, including the award-winning *My Mother's Italian, My Father's Jewish, and I'm in Therapy* as well as *STILL in Therapy* and the popular *Home for the Holidays*. Although the show will incorporate some of Solomon's most beloved stories, the show will also feature lots of new, never-before-seen material. The insanity returns this season when Steve Solomon comes to town.

Steve Solomon
Mar. 1st 2016 | 7:00pm

Up next, this wildly talented quartet will bring you the **Magic of Motown** (March 7, 2016: 7:00pm). With four of the best male Motown singers touring today and one incredible leading lady, the *Magic of Motown* recreates the culture-defining pop songs of the 1960s. Featuring delicate harmonies, charming choreography, and a six-piece back-up band, the *Magic of Motown* accurately and honestly covers the most recognizable tunes from the Motown era as a tribute to one of the most influential periods in American music.

Starring the falsettos of Donald McCall, deep bass of Steven Wood, and soothing vocals of Denny Mendes and Arthur Jefferson, the *Magic of Motown* creates an atmosphere of soulful nostalgia. The lead female singer of the group, Evelyn Dillon, enjoyed a successful career in theatre, performing in acclaimed performances of *A Raisin in the Sun*, *Smokey Joe's Café*, and *Dream Girls*. The six-piece back-up band sets the mood, complete with a saxophone player, trumpeter, guitarist, bass player, keyboardist, and drummer. Musical director Richard Marshall has brought the *Magic of Motown* to audiences domestically and internationally, performing for thousands of people, including the King and Queen of Denmark.

Under the direction of Michael Yorkell, the *Magic of Motown* brings you back to the beginning of the classic Motown sound, from the Temptations to Marvin Gaye. The talented ensemble will perform some of the era's greatest hits, covering all of the recognizable tunes you've grown to love.

Take a stroll down the Great White Way this March with **Kander & Ebb...And All That Jazz** (March 8, 2016: 6:00pm & 8:30pm). Celebrate the 40-year career of one of the most prolific

Magic of Motown
Mar. 7th 2016 | 7:00pm

songwriting duos of all time at The Lyric Theatre this spring. Starring Billy Stritch, Carole Bufford and Marissa Mulder and devised by Barry Day, the dazzling production features all of John Kander and Fred Ebb's biggest hits, from *Cabaret*, *Chicago* and more! The timeless music of Kander and Ebb has dominated the stage and the screen, earning the composing twosome countless Academy, Tony, and Grammy awards.

Kander & Ebb...And All That Jazz was created and directed by Scott Coulter. The cabaret-style show takes you through the Kander and Ebb songbook, including such hits as "All That Jazz" and "Willkommen." Accompanied by a three-piece band, the show's leading ladies take on the sounds of Broadway, from the songs you know and love to tunes you'll hear for the very first time.

First hosted at 54 Below club in New York City, *Kander & Ebb...And All That Jazz* is now on the road, bringing the best of Broadway to your backyard.

Then, be sure not to miss top-selling recording artist and ground-breaking entertainer **Tony Orlando** (March 10, 2016: 7:00pm) as he performs some of his greatest hits on The Lyric stage. Celebrating the 30th anniversary of the wildly popular "Tie a Yellow Ribbon 'Round the Ole Oak Tree," Tony Orlando is best known as the lead singer of the beloved 1970s group Tony Orlando and Dawn. In his performance at The Lyric, Orlando will take you through the decades of his career, performing classics such as "Knock Three Times" and "Candida," among others.

Born and raised in New York City, Tony Orlando got an early start in show business, reaching national charts at the age of 16 with his recordings of "Halfway to Paradise" and "Bless You." Orlando became the first vocal artists to sign with Epic Records. The young entertainer continued to set records, eventually becoming one of the youngest vice presidents in the history of CBS Records.

continued on page 10

Celebrating
30 Years
of
Excellence

1986 - 2016

JUST GOLD JEWELERS

Just Gold Jewelers is a family-owned fine jewelry retail store known for its high quality traditional and contemporary designer pieces in 14 or 18 karat, platinum or silver.

Designers include: Bashoura, Dove, Fredric Sage, Gottlieb, H Weiss, Imperial, Makur, Martin Flyer, Mastini, Mastoloni, Mazza, Meira T, Nanis, Oro Alexander, Rahmanan, Sal Praschnik, Tony Maccabi, Tara, Yael. Watches by Accutron, Bulova & Caravelle. Waterford Crystal and Reed & Barton Sterling are also on hand.

Custom Just Gold designs, jewelry and watch repair, and appraisal services are available year round.

Cedar Pointe Plaza
2691 S.E. Ocean Blvd., Stuart, FL
772.283.6717
www.justgoldjewelers.com


AMERICAN GEM
SOCIETY™



WORKING HARD FOR THE INJURED

For over 20 years, compassion for our clients and knowledge of the law has helped thousands receive the verdicts and settlements they were entitled to.*

Our staff is ready to help you and our team of attorneys is waiting to put 80 years of combined legal experience to work for you.

Speak directly to an attorney NOW!
24/7 Emergency Cell Line
772-214-6464
www.femaleinjurylawyer.com



LAURI J.
GOLDSTEIN &
ASSOCIATES, PLLC

*Results may not be typical. You may not have as beneficial a result.
Auto, Truck & Motorcycle Accidents • Personal Injury • Wrongful Death

1330 S. Federal Hwy. • Stuart, FL 34994 • 772-222-2222

More than **50,000** children in Martin County and throughout the Treasure Coast **COULD GO HUNGRY THIS SUMMER** while schools are closed for the long summer break.

By supporting Treasure Coast Food Bank's 2016 Summer Feeding Program, you're not just feeding children. **YOU'RE FEEDING THEIR FUTURES.**



Please show your support by donating online at stophunger.org or by calling 772.489.3034.

TAKE CENTER STAGE

*With Dr. Fasano's Artistic Results
That Enhance Your Beauty*

Facial Rejuvenation
Breast Enhancement
Body Contouring
& CoolSculpting®

Your Complimentary
Consultation Awaits...



The Art of Plastic Surgery
JOHN B. FASANO, MD

509 RIVERSIDE DR., SUITE 206, STUART
WWW.JOHNFASANOMD.COM • 772.221.9111





Stuart COFFEE COMPANY

Come in and relax with a good brew...

Stuart Coffee Company

Coffee, Espresso, Latte, Cappuccino, Teas, Frappes, Smoothies,
Fresh baked goods, Breakfast, Lunch, Acai Bowls & Smoothies,
Beer, Wine, Desserts, Snacks & much more.

Open 7am—7 days
Extended evening hours for theatre shows and special events!!
55 SW Flagler Avenue – Next to the Lyric Theatre
772-600-8243

Featuring:
SAMBAZON
AÇAÍ BERRY
ORIGINAL BLEND

Experience Inspires Trust

Providing guidance with Insurance for Estate Planning

- Wealth Replacement Strategies • 401K Rollovers and Retirement Income Planning

For Estates over two million dollars:

- Receive complimentary second opinion on your wealth replacement strategy and risk/reward portfolio analysis
- Receive a complimentary copy of “Who’s sitting on your Nest Egg?” by Robin Davis

Now is the time to meet with one of our associates and put our knowledge to work for you! Call for a complimentary consultation



Small Business loans:
Available to
Qualified Customers.

Running a small business here on the
Treasure Coast can seem overwhelming at times.

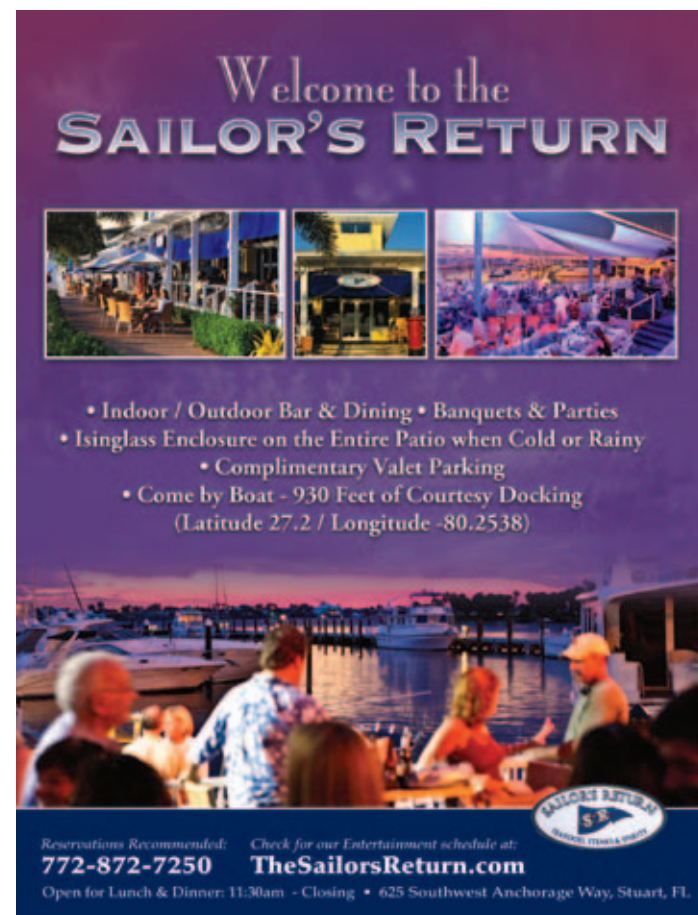
With Oculina Bank you're not alone.
As your local financial partner,
we can help you grow your business.

In a sea of choices,
we make banking easier

Oculina Bank
“The Friendly Bank”

Exclusively serving the Treasure Coast
with locations from Sebastian to Palm City
www.oculinabank.com
877-9-Oculina
[877-962-8546]

Member FDIC



Welcome to the
SAILOR'S RETURN

- Indoor / Outdoor Bar & Dining • Banquets & Parties
- Isinglass Enclosure on the Entire Patio when Cold or Rainy
- Complimentary Valet Parking
- Come by Boat - 930 Feet of Courtesy Docking (Latitude 27.2 / Longitude -80.2538)

Reservations Recommended: **772-872-7250** Check our Entertainment schedule at:
TheSailorsReturn.com

Open for Lunch & Dinner: 11:30am - Closing • 625 Southwest Anchorage Way, Stuart, FL.

1801 S. Kanner Hwy., Stuart, FL 34994 • (772) 463-4441 • (800) 896-5422 • FAX (772) 463-4446

Davis Wealth Management Group, an independent firm with securities offered through Summit Brokerage Services, Inc. Member FINRA & SIPC, and advisory services offered through Summit Financial Group, Inc., a registered investment advisor.

THE CABINET GALLERY INC

You Dream It, We'll Build It



SPECIALIZING IN QUALITY CABINETRY SINCE 1997
 KITCHENS • BATHROOMS • OFFICES • WET BARS
 ENTERTAINMENT CENTERS • LAUNDRY ROOMS

COMPLETE REMODELING AND DESIGN SERVICES AVAILABLE

633 NW BAKER ROAD, STUART, FL
 (NORTH OF THE ROOSEVELT BRIDGE, BEHIND PUBLIX)

772-692-3667
www.cabinetgallery.net

Hours: Mon-Fri 9:00 AM - 5:00 PM • Evening and Weekend Appointments Available

DINNER AND A SHOW?

Since 1991 Luna has drawn an eclectic Downtown crowd. With its creative menu of mouth watering entrees, specialty pizzas, and those irresistible garlic knots, Luna knows how to satisfy all appetites and budgets.

*Salads • Antipasto • Entrees w/ White, Red & Marsala Sauces
 Baked Casseroles • Gourmet Pizza*

Mon-Thurs: 11:00am-9:00pm
Fri/Sat: 11:00am-10:00pm
Sun: Sidewalk Take-out window and outside tables open at Noon.
Sun (Indoor Seating): 4:00pm-8:30pm



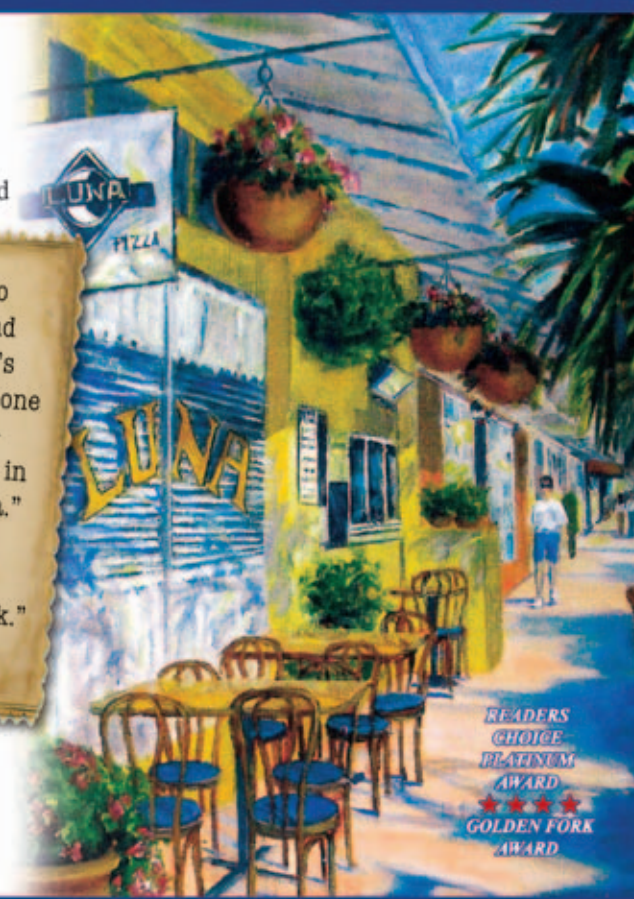
49 Flagler Avenue, Downtown Stuart
288-0550 | www.LunaDowntownStuart.com

"You don't have to venture far beyond the Lyric Theatre's front door to find one of the best Italian-American eateries in all of South Florida."

Palm Beach post 2008

"A Stuart Landmark."
The Stuart News 2005

Italian cooking the old fashioned way from scratch everyday!



2015-16 Volunteers

bartenders

Judy Cialone
 Polly Chrisholm
 Ron Colangelo

Barbara Connell
 Leslie Cuatt
 Jim Egan

Kathy Grant
 Kevin Grant
 Allison Griffin

Maribeth Konz
 Diane Meislohn
 Bertha Perez

Bea Radliff
 Barbara Thommes
 Pat Westbrook
 Reva Zemke

ushers

Mary Pat Anderson
 Barbara Andrews
 Frank Anuso
 Barbara Assalone
 Jean Aukerman
 Linda Bonsignore
 Michael Bennett
 Rita Borucki
 Camille Bowers
 Tom Britton
 Monika Bush
 Patricia Bushman
 Anita Canali
 Corky Clark
 Joan Clark

Karen Clark
 Aleta Crabtree
 Nancy Cunningham
 Ellie Dee
 Dorothy DeFino
 Jean DeFrancis
 Bobbie Demers
 Linnea Desmond
 Sheila Dixon
 Joan Elliot
 Judy Endresen-Worthy
 Jerry Felton
 Jo Forcier
 Bobbie Forman
 Dana Forman

Ranelle Furniss
 Susan Fusco
 Mary Ann Galletta
 Mary Helen Garner
 Marcie Gordon
 Randy Gordon
 Joan Gross
 Howard Hall
 Maureen Hanahan
 Betty Hanneman
 Barbara Hatfield
 Lois Heimbach
 Renee Hill
 Ruth Holman
 Susan Indilicato

Joanne Island
 Sally Jackson
 Bobby Johansen
 Tammy Klein
 Gayle Kochan
 Debbie Kofel
 Kathy Koivula
 Sheryl Konen
 Edna Kulla
 Mary Lamalie
 Rusty Landgren
 Pat Lawler
 Pam MacCormack
 Patti McFadden
 Joanne McNeill

Paul Minicozzi
 Mary Moody
 Virginia Moore
 Ronald Nelson
 Pat Pendergast
 Carole Power
 Keith Quintavalle
 Frances Rago
 Joyce Reed
 Marcy Roeder
 Donna Rollins
 Claire Ronan
 Rita Rooker
 Eileen Rublowsky
 Stanley Rublowsky

Norma Rumbaugh
 Marilyn Sihler
 Kay Snelson
 Marion Stahle
 Gladys Stevenson
 Marilyn Summers
 Marianna Tanzini
 Martha Terrenzi
 Marie Trovato
 Pauline Voeller
 Rob White
 Chris Wright
 Janice Wright

him more dedicated fans with every performance. Now, after two decades with the show, Pat has returned to touring and teaching, traveling the country to give others a lesson in the art of the guitar. Donohue is known for his original compositions, instrumentals and song parodies such as “Sushi-Yucki” and “Would You Like to Play the Guitar?” The guitarist won a Grammy for his participation in “Pink Guitar,” a compilation of tunes by Henry Mancini on the acoustic guitar. Throughout his career, Pat Donohue has won several Minnesota Music Awards as well as a National Finger Picking Guitar Championship. His original compositions have been recorded by a number of major recording artists, including Kenny Rogers, Chet Atkins, and Suzy Bogguss.

Now that he’s returned to touring full-time, Pat Donohue has also gone back into the recording studio. His latest studio album will be released soon, and will showcase the veteran guitarist’s skills in songwriting as well as finger picking. As Leo Kottke has stated, “if you’re a guitar player, he’s going to haunt you.” Let Pat Donohue haunt you this season with his performance at The Lyric Theatre, featuring many of Donohue’s unique original compositions.

Bringing comedy and music together this spring is the strange and remarkable **Wellington International Ukulele Orchestra** (March 18, 2016: 6:00pm & 8:30pm). Created by Bret McKenzie of *Flight of the Conchords* fame, the zany Orchestra combines talented musicians, wild and crazy costumes and a splash of Kiwi humor for a show perfect for the whole family! Covering popular hits of all genres and eras, from “Hey Ya” to “Jolene,” the four-string ensemble causes audiences to go wild, inspiring spontaneous conga lines, break dances, and more.

Conceived in a small New Zealand café by Age Pryor and Bret McKenzie, *The Wellington International Ukulele Orchestra* was designed as a contemporary variant on the dance hall show bands of the 1950s. Since their first sold-out show in 2005, the orchestra has delighted audiences in New Zealand and beyond with their unique balance of big humor and small instruments. The group has performed at festivals around the world, including the Edinburgh Festival Fringe and the Melbourne International Comedy Festival. The group made history, when they became the first ukulele act to appear in New Zealand’s premier concert hall, the Michael Fowler

Center. Featuring various types of ukuleles, a double bass, and harmonious vocals, *The Wellington International Ukulele Orchestra* has recorded four albums and performed soundtrack work for a number of documentaries, sitcoms, and films.

Known for their tendency to burst randomly into song, the orchestra brings a hilarious twist to modern and traditional songs. Their repertoire includes popular numbers, such as “Afternoon Delight” and “Maneater,” as well as traditional New Zealand and Pacific Island songs, for a unique musical experience of recognizable favorites and beautiful, unknown melodies. As *The Wellington International Ukulele Orchestra* likes to say, “If you know the words, sing along. If you don’t know the words, sing along!”

Next, led by the Grammy-award winning **Robert Navarro and his Latin Jazz Orchestra, A Night at the Palladium** (March 19, 2016: 7:00pm) Presented by *The Lyric Theatre and Bluebird Productions* recreates the atmosphere of the Palladium Ballroom, the second-floor dance hall on Broadway in New York City famous for its Latin music and dancing from

1948 until its closing in 1966. Showcasing mambo, cha-cha-cha, pachanga, and merengue, Robert Navarro and his Latin Jazz Orchestra bring together twenty musicians, dancers, and singers for a night of Latin fun.

Born in New York City, Robert Navarro graduated from City College with a BFA in Music, later earning his masters from NYU. Navarro later studied jazz piano under Jackie Byrd, while simultaneously developing his skills as an arranger and producer. After forming the ensemble Grupo Fascinacion in 1982, Robert Navarro produced and arranged records for Charanga America and the Dominican artist Santiago Ceron. Navarro later recorded and co-produced a project for The Ballet Hispanico Puertorriqueno, working with the legendary bandleader Eddie Palmieri. In 2007, Navarro won a Grammy for his arrangement of a song with Bobby Cruz. Over his career, the multi-talented artist has toured with Celia Cruz, Ray Barreto, and Frankie Ruiz. When he’s not composing, producing, and mastering recordings, Navarro teaches guitar, piano, violin, and music technology to students in Port St. Lucie.

In *A Night at the Palladium*, Robert Navarro and his Latin Jazz Orchestra take you back to the era of the Palladium Ballroom, when weekly competitions gave innovative dancers a place to shine. Set to Latin rhythms brought to life by an exciting live band of percussionists, violinists, and vocalists, *A Night at the Palladium* brings you back in time, to the epicenter of a Latin dance and music revolution.

Celebrate the long tradition of Mexican culture in America with **Los Lobos & Ballet Folklorico Mexicano in Fiesta Mexicana** (March 21, 2016: 6:00pm & 8:30pm). The once-in-a-lifetime collaboration explores the contributions and achievements made by Mexican-Americans



Celtic Nights – Spirit of Freedom
Apr. 9th 2016
4:00pm & 7:00pm

throughout history using the art of music, song, dance, and film. The exciting and inventive multi-media production uses visual display and spectacle to communicate the vibrant Mexican-American experience.

Fiesta Mexico-Americana features the award-winning Los Angeles rock band Los Lobos. First gaining popularity in 1987 with their cover version of “La Bamba,” Los Lobos draw influence from a variety of genres, including folk, blues, country, and traditional music such as boleros and cumbia. Active since 1973, the American Chicano rock group features members David Hidalgo, Louie Perez, Cesar Rosas, Conrad Lozano, and Steve Berlin. Their debut album, *How Will the Wolf Survive?*, is ranked #30 on *Rolling Stone Magazine*’s list of the 100 Greatest Albums of the 1980s.

Joining Los Lobos for *Fiesta Mexico-Americana* is the Ballet Folklorico Mexicano. Founded in 1967, the ballet ensemble is based in Mexico City, where they have gained international

recognition for their celebration of traditional Mexican culture through costume and dance. The group has over 120 difference dances in their repertoire, making each of their performances a brand new experience. Experience the sights and sound of Mexico, as Los Lobos and Ballet Folklorico Mexicano join together to pay tribute to the many generations of Mexican-Americans who have shaped our country.

Moving into April, get ready for an evening of Irish song and dance with **Celtic Nights – Spirit of Freedom** (April 9, 2016: 4:00pm & 7:00pm). From the hills of Éire to the shores of Ellis Island, *Celtic Nights* weaves a tale of Irish strength and pride through the medium of song and dance. Featuring six vocalists, six traditional Irish dancers, and a talented troupe of musicians, *Celtic Nights* draws from the folklore of Ireland to tell the legacy of their forefathers. The two-hour showcase includes favorite Irish pieces, such as “Danny Boy” and “Whiskey in a Jar,” as well as an exploration of the influence Ireland music has had on American sounds, from bluegrass to western genres.

A tale of travel and hardship, the history of the Irish people is explored in *Celtic Nights – Spirit of Freedom*. Although some of the journey is melancholic, the show is also filled with laughter and excitement, using the magical folklore of Ireland as inspiration. Covering a range of Irish traditional tunes as well as some more contemporary variants, *Celtic Nights* dives into the Irish influence on American music, featuring notable classics from “Shenandoah” to the songs of the Civil War. Accompanying this exploration into the musical history and influences of Ireland is the show’s elaborate imagery and costuming, which sets the background for the incredible journey.

continued on page 24



The Wellington International Ukulele Orchestra
Mar. 18th 2016 | 6:00pm & 8:30pm



1987
With talk of razing the theater, Friends of the Lyric, a group of concerned citizens, banded together to save the historic structure

MARCH 18, 1988
Friends of the Lyric entered into a contract with the New Life in Christ Church and purchased theater

1993-1995
With assistance from community grassroots efforts and grants, The Lyric Theatre underwent much needed repair from marquee improvements, exterior painting, new roofing and air-conditioning

systems, ADA compliance alterations, box office construction, and remodeling of the restrooms and dressing room

NOVEMBER 12, 1993
The Lyric Theatre was listed on the National Register of Historic Places

1996
New seating installed in the orchestra section and administrative offices constructed

2001
The Balcony of the theater was remodeled for the installation of new balcony seating, an elevator was installed and refurbishment of the lobby and restrooms



2002
Lighting and Sound Equipment upgraded

2004-2005
The expansion of The Lyric was commenced and completed, enlarging the stage by 14 feet, adding a backstage with flex-dressing area, a restroom, and office/storage areas. The “Star” dressing room also underwent renovation to offer a quaint comfortable room with a shower and restroom.

SUMMER OF 2014
The Lyric was closed for substantial renovation as part of the Love The Lyric Capital Campaign. Lobby and box office improvements, including new exterior and interior entrances, additional Box Office service windows, and bar. New orchestra seating and sound system were installed inside the theater and all of The Lyric’s interior stucco walls were smoothed out and architectural elements added to the walls and columns.

NOVEMBER 11, 2014
Grand Reopening

SEPTEMBER 2015
The Lyric’s proscenium was ornamented in an Art Nouveau style. Drawing inspiration from the organic and geometric forms of The Lyric’s exterior, the elegant design of the proscenium contain artistry and craftsmanship of the trompe l’oeil art technique.



20¹⁵₁₆ SEASON

This season, The Lyric has it all with award-winning musicals, internationally renowned country artist, rock and roll divas, folk music legends, hilarious political commentators, and much, much more.

						
FEBRUARY 17 th	FEBRUARY 20 th	FEBRUARY 22 nd & 23 rd	FEBRUARY 25 th	FEBRUARY 26 th	FEBRUARY 28 th	MARCH 1 st
						
MARCH 7 th	MARCH 8 th	MARCH 10 th	MARCH 12 th	MARCH 13 th	MARCH 15 th	MARCH 17 th
						
MARCH 18 th	MARCH 19 th	MARCH 21 st	APRIL 9 th	APRIL 13 th	APRIL 16 th	APRIL 22 nd

Tickets available online, by phone and at The Lyric Box Office!

www.lyrictheatre.com (772) 286-7827

2015-16 Contributors

Thank you to all those generous contributors who have donated \$100 or more to The Lyric Theatre as of January 22, 2016. If we have inadvertently overlooked your name in this listing, please accept our sincere apology and notify our Development Director at 772.220.1942, extension 209.

Director’s Circle

Robert P. Bauman
Butch & Jan Bayley
Judy Berkes
Bernie & Starr Boniface
Frank M. Byers Jr.
Vince & Sharyn Cerniglia
Ethel & Jack Christin
Ann Corwell
Bill & Audrey Crandall
Jan & Bob Crandall
William & Kimberly Crook
Michael & Diane Dadko
Lee & Gaby Elsey
Stephanie Flicker &
Peter Freudenberg
Jean Friend
Paul & Annette Gartzman
Mary & Dan Gescheidle

Eileen Morris & Bob Griffin
Dave & Vicki Grove
George & Marianne Hartnett
Mrs. Elizabeth Herold
The Herold Family
Ray & Peg Hirvonen Foundation
Hope G. Jochem
Mr. & Mrs. Knight Kiplinger
The Kiplinger Foundation
Mr. & Mrs. Keith Kopp
Elisabeth Lahti
Lesser, Lesser, Landy
& Smith PLLC
Stacey K. Levy
Sharon & Greg Lewis
Mr. & Mrs. H.W. Lichtenberger
The Lichtenberger Foundation
Ed & Jacqui Lippisch

Frank Loesser Enterprises
John & Laura Loesser
Natalie J. MacDonald
Lindy Donigan &
Deane MacMillan
Carol & Jack McCarthy
Steve & Julianne McGovern
Edward & Joan McGowan
Frank & Lore Metzger
Stephen P. Munn
Judy Nelson
Northern Trust-Scott Roads
Oculina Bank
Dorothy Ohlbach
Randy & Linda Prange
Douglas & Carol Rearick
Rabbi Dannel Schwartz
& Suzi Romanik

Lauri J. Goldstein-Scher
& Dr. Elliott Scher
Janet & Charles Seidler
Paul & Tasha Shirley
Patricia Simmons
Mr. & Mrs. Vincent A. Smyth
Carol C. Spera
Douglass & Patricia Stewart
Swann Family -
Steven, Daryl, Cody & Ky
Mike & Judy Tenzyk
Mr. & Mrs. Frank Tidikis
Clayton & Anna Timmons
United States Sugar Corporation
Harold & Lois Walsh
Ronald W. Werner
Nancy & Yung Wong
John & Kay Ziegler

The following donors have generously committed to providing sustained support of The Lyric over a five-year period as part of the Director's Circle program:

Diamond Patron (\$5,000 & Up)

Mr. & Mrs. Albert Cardinali
Dubose & Dorothy Heyward
Memorial Fund
Michael & Doreen DeDomenico
Michael and Doreen DeDomenico
Family Foundation
Dana & Kathy de Windt
Milton Fine
Howard Gilman Foundation
Mort & Brigitte Harris
Gen. & Mrs. Gerald Hart
MAH Foundation
Carolyn Metzger
PNC Wealth Management
Tom & Ellen Noneman
Noneman Foundation
Thomas P. Schmitt
Robert & Carol Weissman

Gold Patron (\$1,000 & Up)

Frank A. Anfuso
Joseph & Chan Bank
Tom & Virginia Baxter
Joe & Theresa Beditz
Suzanne M. Beers
Camille Bowers
Cathy Brooks
Jordan Preshong Brown Special Needs
Children Memorial Fund
Michael & Marie Braid
John & Margaret Ann Brutvan
The Brutvan Family Foundation
Paul & Shannon Burke
Thomas & Polly Campenni
Tony & Karen Carpentier
Ms. Daisy Carter
Jeff & Mary Christopher
Judith Nightingale & Franklin Cole
Carole & Paul Cole
Howard & Elaine Cook
Tim & Maureen Cotter
Pat Deerin
Michael & Nancy Del Priore
Perry & Blanky Diamond
Patty Downing
Robert & Noreen Fisher
Kia Fontaine & Luca Fontaine Bradley
Wayne & Debra Freihofer
Stephen & Aida Fry
Barry & Merle Ginsburg
Mrs. Diane Greenawalt
Mr. & Mrs. Thomas C. Hartzog
Mr. & Mrs. Tom Hawken
Stuart Web, Inc
Robert & Patricia Hendrickson
Edward P. & Juanita J. Henson
Jim & Jan Hogan
Wayne & Paula Hundt

James & Madeline Jacobs
Madeline & James A. Jacobs
Philanthropic Fund
Ned & Joyce Kenna
Abby Koffler
Mr. & Mrs. Fred Kopf
The Kopf Family Charitable Fund
John & Linda Loewenberg
James H. LoPrete
Louis and Nellie Sieg Fund
Andrea Lutz
Joan & Chuck Mac Gillivray
Bob & Ralf Massey
Holly E. Metzger
J. Scott & Susan Miller
L.J. & Susan Miller
Mr. & Mrs. James F. Orr III
Bonnie K. Barker & George J. Pappas
Mrs. Dorothy J. Rayburn
Kathy Flicker Rosenberg
Louise Bouchard Saelzer
Earl & Sharon Smith
Ray & Elynn Stevenson
Mrs. Ina Tornberg
Mr. & Mrs. James F. Webert
Island Sunrise Foundation
Dr. George & Gloria Whittle
Wipeout Pests & Termites
Gloria Wolfe
Walt Zeigler
Mr. & Mrs. Paul Zimmerman

Silver Patron (\$500 & Up)

Mr. & Mrs. Anthony Amanti
Terry & Susan Bischoff
Ralph & Christine Brown
Anita Ross Canali
Ronald Daugherty
Jeffrey Davis
Jean M. DeFrancis
Denny Family Charitable Fund
Harland & Carolyn Dolamore
Marilyn Dudlik
Brian & Mary Dugan
Barbara Flowers
Lester & Angie Frankenthal
Jim & Sally Friend
Dr. & Mrs. Ronald Grober
Carol Guthrie
Diane Haskett
John & Sara Hazelton
Richard & JoAnn Hinckley
Thomas C. Beddows & Lynn Hobbs
Ellyn & Howard Kaye
Ned & Joyce Kenna
Jeanne Lambdin
Mary LaPointe
Vince & Angie Laviano
Todd & Margaret Laycock
Karin Leone
Lolita Lindstrom
Tony McConnell
Charles P. McCormick, Jr.

Patsy & Don McCree
Alice & Allan Mostoff
Dr. & Mrs. Edward M. Overfield
Pat Pendergast
Gene & Rilla Potenhauer
Sylvia Presto
Bobbi Proctor
Gary & Joan Pyne
Bea Radloff
Wendy Randall
Mike & Joyce Schiavone
Chuck & Rachel Scott
Joan C. Smith
Nancy Wertheim
Sharon Westerfield
Jeffrey & Jane Witherwax
Jim & Ann Young
Richard & Nancy Zappala

Patron (\$100 & Up)

Jake Abbott
John & Kathryn Adamiak
Carol Gesser & Anis Akrawi MD
Dr. Karl Drehoibl & Amy Albert
Lynda Alexander
Dr. & Mrs. Albert Altongy
Ruth & Wayne Amber
Joan & John Amerling
Chet & Lee Amond
Howard & Sandra Anderson
Sharon Anderson
Frances B. Andre
Barbara & Joe Andrews
Jo Ellen Andrews
Rick Angelone
Ralph Annunziata
Mr. & Mrs. Beryl Anthony
Frank Antonucci
Bob & Barb Apley
Jean Arena
Patricia Arney
Patricia Arnold
Harriet Aronson
Bonnie Arrington
Joseph Ascrizzi
Jeff & Deanna Atlas
Ann B. Avallone
Mike Bachman
Emily & Shirley Baer
Joan & Gordon Bahl
Robert W. Bailey
Joanne C. Baker
Ginger Baldwin
John Moffitt & Priscilla Baldwin
Renee & Joel Barkan
John & Rosilynn Barone
Gerry & MaryAnne Bartfield
Sally Batz
Susan & Jules Bauduc
Mitch & Lynn Baumeister
Richard & Eva Baumgart
Bill & Pat Baxter
Linda & Gary Beagell

Lisa Bebout
Barbara Begleiter
Ralph Bennett
Richard & Myrna Bennett
Janet Bentz
Roger & Margaret Bernot
Dr. & Mrs. Charles Berwitz
Tom Bevan
Malcolm Beyer
William Biebusch
Luther Birdzell
Linda Bisbee
Steve Bohner
Mary Jeanne Bolger
Myra Bottoms
Mary Boman
David Bourbeau
Mark Crosby & Gail Bowen
Mary Ann & Robert Bowie
Joan Boyce
Robert Boyhan
Jack & Dodie Boyle
Tim Bowman
Shirley Bradley
R. W. & D. A. Bradshaw
Jim & Jackie Bradley
Gail & Wally Brady
Linda Braswell
Sarah & Tom Brendal
Anne & Philip Brett
Gary Brookins
Sam Brooks
Bonnie Brown
Ed & Barbara Brown
John & Diane Brown
James T. Brown Jr.
Ted Brown
Cindy Bruce
Bill Burkhard
Iris Burkhardt
Anne Burford
Pamela Burke
Elizabeth Burton
Jin Butler
David Bye
Mr. & Mrs. Robert M. Bysse
Maureen Cahill
Mr. & Mrs. James Caiola
Carol Calder
Dr. Robert Calderin
Ken & Nancy Caldwell
Robin Callahan
James Cammack
Cheryl & Rob Campbell
Murdoch & Deborha Campbell
Garry Campe
Mr. & Mrs. Daniel Capper
Francis & Esta Carelli
Dr. & Mrs. Michael F. Carelli
Robert Carr
Keith & Lauren Carroll
Andrea Carter
Barbara Carter
Sue-An Caruso
Michael Carvalho
Richard & Lois Case

David Cates
Mr. & Mrs. Jack Cavari
Sandra Cecelia
Robert & Janice Cervený
Jeanne Chapline
Judy Chisholm
Leo & Dolores Clancy
Davis Clapp
Fay Clark
Karen Clark
Calvin Clemons
Mr. & Mrs. Tom Coash
Mr. & Mrs. Howard Cohen
Wendy & Barry Cohn
Robert & Mendy Coker
Ron & Joan Colangelo
Sarah Coleman
David & Cynthia Collier
Bill & Joan Collins
Mr. & Mrs. Fred L. Comfort
Dorothy Conant
Lewis Conklin
John Connelly
Ned Conway
Daniel Coope
Kim Cooper
Mrs. Stuart Corder
Joseph & Nicki Costella
Richard Costello
Gary & Jan Coton
Mr. & Mrs. Noel Couture
Charlotte Cox
Lori Coyle
Robert Stengel & Valerie Crane
Eric & Jeanne Crawford
Robert Crowder
Mr. & Mrs. Louis Cucci
James Culbert
Marie Culbreth
Mariana Cunningham
Donald & Gail Curtis
Joel Czajka
Sharyon Daigneau
Richard Dakers
Kathy LaBar
Tom & Sally Hamby
Rev. Allardyce A. Hamill
Robert Hamilton
Edith & Herb Hanke
Ron & Lyn Hanlon
Ruth Hardin
Craig & Linda Harlan
Tissa Harrah
Suzanne Harrington
Cal Harris
William Harris
Phyllis Harrison
Toby Harrison
Stewart Hatch
Jim Haugk
Frank Hayden
Susan Hearn
Maura & Joe Heffernan
Mary Jane Heimann
Mr. & Mrs. James Henderson
Mr. & Mrs. Andrew Doyle
Betsey Doyle

Donald & Diana Doyle
Katherine Duane
Rosemary Dudley
Hammond Dugan
William Dwyer
Elizabeth Dymowski
Joyce Dziubaty
Cynthia & Bill Eaton
John & Karen Edds
Marilyn Eddy
Roger & Michele Edwards
Bernadette Ellingsen
David & Anne Elliot
Mary Jane Ely
Mr. & Mrs. Richard Enright
Suzanne Esposito
Mark Fairchild
Tom & Sandy Feeley
Richard Fehr
Sandra Fehribach
Thomas Ferrante
Janet Fetzer
John Fiadini
Mr. & Mrs. Richard Fineburg
Mr. & Mrs. Alan H. Finegold
Carl & Sirkka Firley
Carl & Julie Fischer
Joan & Bob Fisher
Mrs. Lucette Flanagan
Jan Flynt
Bonnie Foley
George Forese
Robert & Ann Fortunato
Mr. & Mrs. Richard Foster
Lanning & Jane Fox
Ron Frank
Shirley Frank
Steve & Lynn Frank
Marlys Freeman
Melissa Fricke
Donna L. Friedman
Janie Fuller
Jerry Fuller
Susan Fullerton
Charlene Furman
Leo Galanti
David & Marcia Galfond
Dr. & Mrs. Milton Gallant
Jay Garbose
Paul & Irene Garfinkle
Mary T. Garner
Mr. & Mrs. John Garofalo
Mary & Brian Geary
Wilford Ghioto
Todd & Margaret Gibbs
Steven Gladstone
Elaine Goddard
Cindy & Michael Goldberg
Anne & Frank Goldstein
Robert Goldstone
Porfirio & Mary Ann Gomez
John & Kathy Gonzalez
Kathleen Good
Mr. & Mrs. David Gordon
Patricia Gorman
Mr. & Mrs. Robert Grabowski
Flamingo Pools & Patios Inc.
Diane & Fred Graczyk
Henry & Rachelle Grady
David Graf
Anafior Graham
Lois & Hadar D. Granader
Lorene Grant
Robert & Mary Graves
Robert Grayson
Robert I. Greene
Robert & Ana Greene
Judith Greenstein
Howard K. Gregory
Nunzio & Dorothy Grella
Jo Griffith
Peter & Gayle Grimm
John & Barbara Grimmer
Mrs. Nina Griswold
Elizabeth Groff
Deborah Gunvaldsen
Delph Gustitus
John & Kathryn Haines
Angie & Christopher Hallberg
Patricia Hamblin
Kathy LaBar
Ellie Lafer
Charles A. LaForge Jr.
Barbara LaMirand
John Lamparter
Richard Landesman
Marsha & Tom Lange
Richard & Rose Langbert
Judith Lankau
Jefferson Lankford
Brian & Karen Lavan
Robert & Linda Lecky
Brian Lee
Jean E. Lee
Karen Lee
Joann Leone
Perry Leshner
Howard Levin
Pamela Levin
Robert & Phyllis Levin

Robin Henn
Patrick & Mary Hennessy
Cynthia F. Herbst
Jane Herman
Alex F. Hernandez
Gordon Herring
Mr. & Mrs. Allen Herskowitz
Wade Hersperger, Jr.
Mr. & Mrs. Donald Hesch
Michael C. Hill
Mr. & Mrs. Werner Hilpert
Thomas & Sandra Hirsch
Thomas & Kathleen Hodas
Jim & Jan Hogan
Rich & Teresa Hohman
Madelyn & Tom Holder
Mary & Richard Holleman
Noel & Ida Hood
Marilyn Horan
Darla R. Horn
Jim & Suzanne Horstman
David & Judi Hubert
Ethel & Wayne Hubler
Erica Hudnet
Helen Huff
Mr. & Mrs. Carlton Hughes
Ronald Ingles
Mary Jane Inman
Deborah Irish
Lynn E. Irvin
Frances Jackson
Dr. & Mrs. G. Keefe Jackson
Karen & Lars Janson
Janet Jaworski
Kellie Jocoy
Bob & Sarah Johnson
Lynn & Bud Johnson
Margaret Johnson
Mark Johnson
Marnie Johnson
Skip Johnson
Ben Jones
Marion Jones
Mary Jeanne Jones
Melissa Jones
Bill & Ruth Jose
Mindy Joy
Linda Jueckstock
Dr. Marie G. Jureit-Beamish
Thomas Kane
Linda Kardos
Elaine Katz
Steven Katzman
Pamela Kay
Rick & Sharon Kazdin
Lawrence Kearns
Mr. & Mrs. Joseph L. Kelley
Caron P. Kelly
Caron Kelly Interiors
Jeff & Brigid Kelly
Joan C. Kelly
Shaun Kiele
Karen Kendall
Earl & Jonette Kidd
Eugene Kiely
Timothy Kinane
Brendan Kirby
Randall & Sylvia Klaker
Susan Klein
Tammy Klein
Ron Klemeinc
William & Karen Klempner
Susan Klein
Wayne Klick
Mr. & Mrs. Robert Kloppenborg
Jules & Gwen Knapp
James & Laurel Knoska
Edward Kosakosksi
Elizabeth Koster
John Kostun
Jeffrey Krauskopf
Sandra Krenn
Mary Krey
Mr. & Mrs. Philip Kron
Maureen Krosin
Karl Krueger
John & Cristina Kruszewski
Jean Kunitz
Col. Nicholas & Carole Kuzemka
Regina Kyle
Kathy LaBar
Ellie Lafer
Charles A. LaForge Jr.
Barbara LaMirand
John Lamparter
Richard Landesman
Marsha & Tom Lange
Richard & Rose Langbert
Judith Lankau
Jefferson Lankford
Brian & Karen Lavan
Robert & Linda Lecky
Brian Lee
Jean E. Lee
Karen Lee
Joann Leone
Perry Leshner
Howard Levin
Pamela Levin
Robert & Phyllis Levin

Stephen Levine
Arthur Levitt
Mr. & Mrs. Melvin Levy
Stephan & Linda Lewen
J.D. Lewis III
Margaret Lewis
Antonio Limbardo
Roy & Michelle Lindow
Nancy Lindsay
Donna Linton
Cameron Little
Jim & Molly Little
Rosemary C. Lizars
Roger Loeffelbein
Mr. & Mrs. Henry V. Logan
Jeffery & Heather Long
William & Pam Long
Cabot Lord
Wendy Lucas
Irene Luneki
Sandi P. Lyman
Roger Lyon
Gertrude & William MacIntyre
Karen Mackie
George & Joan MacLean
George & Mary Jane Madden
John E. Maddie
Paul & Doris Magnuson
Benjamin Magrill
William Mahoney
Robert & Myra Maisano
Mrs. Elizabeth H. Mallonee
Steve & Maria Mamangakis
Bill & Carol Mangold
Mary Jane Manna
Mr. & Mrs. Ben Maran
Linda Rodney & Marc Weinstein
Erik & Candy Martin
Elinor Mastroff
Elaine & Jim Matts III
Mr. & Mrs. Wayne Maxson
Robert McCloskey
Tim McCreary
Diane 'Miki' McDowell
Mr. Joseph McGavock
Dr. Gregory McGee
Allola McGraw
David Heron & Kathryn McHale
Gloria McHardy
Harry McIntosh
Diane McKechnie
Patricia McKenzie
Raelee & Charles McLeran
Jayne & Edward McMellen
Barbara McNamara
Gerald Mehlich
Mr. & Mrs. Peter Meier
John & Carolyn Mellaci
Shari & Michael Meltzer
Don Metz
Mr. & Mrs. Edward Metzler
Carmel Miele
Paul & Pat Mielke
John Mila
Linda Miller
Michael & Lyndia Miller
Jacqueline Millstone
Dave & Mary Milmore
Jerry & Betty Miloscia
Kathy Minns
Kathy Miranda
Betty Mitchell
Ivar Mitchell
Paul & Clara Monaco
Elaine Morgan
Susan Morris
Harry Mosesian
Sheldon & Lisa Moss
Michael & Carol Mucci
Debra S. Mueller
Robert Mulcahy
Terry & Patricia Murphy
Richard N. Myers
Mrs. Constance A. Nast
Karen Muller & Ronald Nathan
Carol Timmons & Regina Negri
Mark & Rosalind Neilen
Michael Newman
Sandra Neuberg
Carol Newton
Elizabeth Newton
Mrs.Vianne Nichols
Raymond "Tony" Noga
Peg & Jack Nolan
Patricia Noonan
Janice Norman
Niki Norton
Charles Notabartolo
Mr. & Mrs. Robert Nowikowski
Dr. & Mrs. Domingo Ngo
Marianne & Hugh O'Boyle
John L. O'Brien
John O'Dea
George & Rigmor Olesen
Mr. & Mrs. Al Olafsson
Clifton & Barbara Olson
Jennifer Oram
Grant & Cindy Osborne
Tony & Rose Oteri
Robert & Inge Owens
Terry Owens

Ken & Janet Ozier
Joseph & Margaret Palella
Dr. & Mrs. Andrew K. Palmer
Dave Friday & Carrie Palmer
Marjorie Parmenter
Anne Parsons
Paul & Jean Pascarelli
Guy Passmore
Elliot & Sheryl Paul
Elliot Paul & Company
Judith Horgan & Steve Pavsner
Maureen Pearce
Elaine Pearson
Mr. & Mrs. Roy Peraino
Nick & Nancy Perris
Marsha Petcove
Kevin Peterson
Nils Peterson
Deb & Lee Pfrogner
Eleanor Picciano
Ronald Piscopo
John Plavan
Dr. & Mrs. Robert L. Polakow
Gail & Leonard Polanski
Jackie & David Polge
Richard & Linda Pontynen
Danny Post
Louise Potter
Tara Powers
Tracy & Theresa Pressner
Gordon Proctor
Frances Providenti
Paul & Elaine Puzzo
Brenda Raley
Jean Rappaport
Dr. & Mrs. Michael Raskin
Todd & Medora Reading
John & Sally Reardon
Joyce A. Reed
Pattie & Charlie Restaino
Kelly Rica
Joette & Terry Rice
Ray & Sue Riddell
Lisa Ridgway
Susan & William Ritchie
Bill's B.S. Inc.
Jon & Judy Robb
Mark E. Robitaille
Barbara Roetzel
Dr. & Mrs. Harry Rohrer
Lee Roney
Stephanie & Bert Rosa
Lloyd Ross
Richard & Yvonne Ross
Ravonne Ross
Christine & David Rosso
Anne Roth
Robert A. Rotundo
Charles & Elizabeth Rowbotham
Charles L. Rucquoi
Norma Rumbaugh
Sharon & Ken Russell
James A. Ryan
Wendy Ryzner
Jeannine Salek
Dr. & Mrs. Edward Saltzman
Sally Batz & Henley Sandidge
Robert Sanford
Vincent Satter
Judith & Jorge Santiago
Donald & Leigh Savoy
Daniel Sayre
Diane & Michael Schachter
Mr. & Mrs. Robert Schiffenhaus
Linda Schmidt
Dr. & Mrs. Steven Schnell
Cathy Scott
Charles Scott
Fay Scott
Charles & Dorothy Searle
Ann Seeley
Paul Seeley
Jan-Clair Sellwood
Evelyn & Bernard Sensale
Michael & Denise Sessions
Louis Sewell
David & Terry Seyffart
Ken Shaffer
Mr. & Mrs. Gregory M. Shapiro
John Shapleigh
Catherine & Don Sharkey
Kevin & Deborah Sharkey
Rhonda Shear
Roger Shephard &
Sandra Krenn-Shephard
Richard & Julie Shelby
Mrs. Carolyn Sherin
Frederick Shilling
Al & Dottie Shine
Stacy Silvestri
Arlene Simms
Fred & Marilyn Simon
John Simoni
Mr. & Mrs. William A. Slat
Mark & Kim Smith
Robert Snyder
Jim Sopko
Marianne Spector
Nancy Spector
Kathy Spurgeon
Richard Starita

Mrs. Lou Stern
George & Betsy Stewart
Jacques Stiegelman
Susan & Frank Stifelman
Randolph Stone
Charles & Joyce Strickler
Stuart/Martin County
Chamber of Commerce
James Stuckey
Rod W. Sturm
Michael & Sue Stutzke
Anne Sullivan
Greg Sullivan
Helene Sullivan
Arvid & Emily Sundquist
Terry Sussman
Tracy Sutherland
Amy Swenson
LeAnn Szymborski
Davies & Gayle Tainter
Mr. & Mrs. Kenneth Takacs
Adam Talanczuk
Richard Talbot
Mr. & Mrs. Frank Tasco
Tom Teal
Larry Tefft
Keith Templeman
Virginia Tenzis
Mike & Judy Tenzyk
Jean & Bob Terhune
Marie Terry
Terry Tevis
Deborah Textor
Larry Thackray
Bradley & Mildred Thayer
Jim Thogersen
Thomas & Sandra Thurlow
Helen Tidgwell
Harry Tietjen
Lavaughn Tilton
Carolyn Timmann
Mary Ann Timmis
Frederick H. Tingberg
David & Lisa Tompson
Gordon & Glenda Toney
Joseph Topper
Joseph Torre
Karen Townsend
Pellegrino J. Tozzo
Mr. & Mrs. Joseph Trotta
Nancy Ullano
Melinda Underwood
Kate Uras
Ellen Vadney
Mr. & Mrs. Robert Valle
Frank & Julia Valente
Gene & Judy VanCuren
Wayne Van Dusen
Mr. & Mrs. John Valentino
Mr. & Mrs. Joseph Vannucci
Dr. & Mrs. James Vaux
Ron & Jo Vent
Karen & Joseph Vessely
Larry & Helen Vierow
Betty Volkwein
Nicki Van Vonn
Michael & Anne Vinyon
George Vischak
Tom & Vicki Wackeen
Stan Waite
Sandra Walker
Kathleen S. Wallace
Jerome A. Wallenquest
Robert & Judith Walters
Robert Ward
Barbara Warner
Greg Warner
Howard Warren
Dr. Elliot Wasserman
Jill Wattles
Lori Watts
Chris & Dona Waynt
Linda Weiksnar
Linda Rodney &
Marc Weinstein
Nancy Welker
Susan R. Wertheim
Louise Wheeler
Jim & Jan Wilds
Craig Willert
Harvey Wilson & Joan Williams
Patricia Winans
Doug Winter
Bill & Marnee Wirth
David Wieseaupt
Jane Witherwax
Claire Woolley
Chris Wright
Marge & Bob Wroble
Nancy Wyant
Richard W. Young
Terri Youngern
Michael Zanakis
Helen Zebrowski
Mr. & Mrs. John C. Zimmerman
Edward Zorn

Over their North American tour, *Celtic Nights* has been met with overwhelming praise by audiences from California to Pennsylvania. The performers' ability to transition from jigs and reels to hornpipes and polkas have brought them many fans from coast to coast. This season at The Lyric Theatre, *Celtic Nights* will weave the tale of the Irish people through song and dance that will have you crying, laughing, and begging for more.

Next, member of the acclaimed folk music group Ollabelle and daughter of music icon Levon Helm, **Amy Helm** (April 13, 2016: 7:00pm) will perform at The Lyric this April. A remarkable songwriter and a powerful singer, Helm commands any stage she performs on, captivating audiences with her soulful voice. With a successful career as a performer in groups such as the Leon Helm Band, the Dirt Farmer Band, and the Mid-night Ramble Band, Amy Helm now amazes audiences with music that is both intimate and universal.

Inspired by the music of her father, the legendary drummer of The Band, Levon Helm, and her mother, the American singer and songwriter Libby Titus, Amy Helm began performing in bars throughout Manhattan when she was a young teenager. After stints in a number of different groups, Amy's father, Levon, invited her to play in his band. Finding her

confidence on the road, Amy Helm went on to form Ollabelle, a multi-genre, multi-instrumentalist folk group out of New York. The group was met with great critical acclaim, featured on NPR's *All Things Considered* in 2004 and invited to participate in Alison Krauss' national Great High Mountain Tour. A prolific artist, Amy also co-produced her father's 2007 comeback album, *Dirt Farmer*, which earned the Grammy Award for Best Traditional Folk Album, and helped organize the famous Midnight Ramble concerts at Levon's studio in Woodstock, New York.

Amy Helm's first solo release, *Didn't It Rain*, is a highly personal and heartfelt debut album. The album was recorded and edited during a very trying period of Helm's life, with the passing of her father, Levon Helm, in 2012. In addition to Levon's role as producer of *Didn't It Rain*, the legendary musician's distinctive drumming is featured on three tracks. Ollabelle bandmate Byron Isaacs and Little Feet keyboardist Bill Payne also accompany Amy on her debut recording, with tracks including Sam Cooke's "Good News" and the title track, "Didn't It Rain," a powerful gospel song. Amy Helm will perform songs from her debut album and more this April on The Lyric stage.

And finally, who better to finish out the spring season at The Lyric Theatre than the queen of comedy herself: **Paula Poundstone** (April 16, 2016: 6:00pm & 8:30pm). Proudly sponsored by WQCS/88.9 NPR for the Treasure Coast. Celebrated for her recent performance in the critically acclaimed Pixar movie *Inside Out*, Paula Poundstone is also a comedy genius on the stage. In every performance, Paula Poundstone astounds audiences with her ability to think on her feet, interacting with audience members in impromptu conversations that leave audiences laughing for the entire performance, and even on the car ride home! Paula's ability to create humor on the spot is legendary, as she graces the stage with her commanding presence and unstoppable wit. Paula Poundstone is so talented, audience members are constantly debating whether the random people she talked to were "plants" – which, of course they never are. Check out the most hilarious woman in comedy this April on The Lyric stage.

After dropping out of high school to pursue comedy, Paul Poundstone immediately gained a cult following of dedicated fans. She swiftly became one of the best humorists of all time, making a name for herself as a comedian who knows how to work with her audience in innovative and exciting ways. A regular panelist on NPR's most popular show, the weekly news quiz show *Wait Wait... Don't Tell Me*, Paula Poundstone has a way with words, handling personal exchanges and political humor with ease and tact. Poundstone was the first woman to win the Cable ACE award for Best Standup Comedy Special in the 1990s, and later became the first woman to perform standup at the White House Correspondents Dinner.

Throughout her career, Paula Poundstone has starred in numerous HBO and Bravo specials, won an Emmy Award, and served as "official correspondent" for *The Tonight Show* for the 1992 presidential race. As a testament to her impact on the stand up scene, Poundstone was named one of Comedy Central's 100 Greatest Standups Of All Time and was voted into the Comedy Hall of Fame in 2010. When she's not performing on stage, Paula is writing, including her book "There is Nothing in this Book That I Meant to Say" as well as pieces for *Entertainment Weekly* and *The Los Angeles Times*. Paula Poundstone recently released a comedy CD called *I Heart Jokes: Paula Tells Them in Boston*.

For her performance at The Lyric Theatre this season, expect an up-close and personal experience with one of the most influential female comedians of all time.



Paula Poundstone
Apr. 16th 2016
6:00pm & 8:30pm



TREASURE COAST DERMATOLOGY

Specializing in the Treatment of Skin Cancer

TRUST US WITH THE HEALTH OF YOUR SKIN

Our Board-Certified Physicians are Here to Help.

TIM IOANNIDES, MD
Board Certified by the American Board of Dermatology

CYNTHIA GOLOMB, MD
Board Certified by the American Board of Dermatology

Stuart
221.3330

Port St. Lucie
398.8213

St. Lucie West
878.3376

Fort Pierce
464.6464

Accepting New Patients

www.TCDermatology.com



Sailfish Realty is always happy to sponsor The Lyric and many other local organizations:





101 SE Ocean Blvd
Suite 102
Stuart, FL 34994

(772) 494-6999
www.sailfishrealty.com

f t in v





41B SW
Osceola St.
772.419.0181



WHAT WILL YOU WEAR AT
YOUR NEXT SHOWING?

Browse our
gallery &
experience the
EXTRAordinary!

 EMFINEJEWELRY.COM




IN YOUR OWN EVENT!

RENT
THE LYRIC!

The Lyric staff will work with you to stage an unforgettable event in our 500-seat showplace!

**Fundraisers • Business Meetings
Awards Ceremonies • Seminars & Workshops**

Call Karin Leone at **772-220-1942, ext. 205**
or e-mail Karin@LyricTheatre.com
for rental rates and availability!

www.LyricTheatre.com






NOW OPEN IN 2 LOCATIONS

2555 SE Bonita Street Stuart FL
2090 NW Federal Hwy US1 Stuart FL
772-223-8991



MARTIN FENCE CO.
SINCE 1979

"For All Your Fencing Needs"

877-777-3212
www.martinfence.com



*Is it time to ask for help
with your loved one?*

**We provide excellent in-home health care services to
help you and your loved one live a better, healthier life.**

- Live-in & companion help
- Certified Nurses Assistants & Home Health Aides
- Long term care insurance accepted
- Mobility assistance & transfers
- Peace of mind and freedom for you
- Personalized in-home care
- RNs & LPNs
- Unique Alzheimer's Assistance Programs
- Wound care

Depend On Our Experience For The
Finest Personal Home Health Care
Our Caregivers Are Insured

Voted BEST CARE

Serving Jupiter & Stuart
561-748-7118
772-287-5432
www.championhome.com

The Area's Leader in Individual Eldercare

Champion
Home Health Care, Inc.

NR30211392





Professional | Experienced | Reliable

In-Home Nursing and Companion Care
- From one hour to 24 hours -



Why Call TenderCare?

- Established in 1994
- Family Owned & Operated
- On-Call & Personally Available, 24/7
- Caregiver Matching to Clients Care Needs & Personality

*Personal Care • Light Housework • Transportation
Meal Preparation • Med Management*

Serving Palm Beach, Martin, St. Lucie, Indian River and Okeechobee Counties.
Call us anytime Stuart: **(772) 220-3090** - North Palm Beach: **(561) 623-7724**
www.TenderCareFL.com

Nurse Registry License
30211575 & 30211418





Journey

wings to fly

DANCE COMPANY

April 22nd | 7:00^{PM}

LyricTheatre.com HISTORIC DOWNTOWN STUART 772-286-7827




THOMAS WINTER
PHOTOGRAPHY

Capt. Jeremy Neff

772.463.8256
tom@thomaswinter.com
www.thomaswinter.com
COMMERCIAL | CORPORATE | INDUSTRIAL

WANTED

Martin and St. Lucie High School and Middle School Students
Garage Bands & School Bands/Ensembles



7'0"
6'6"
6'0"
5'6"
5'0"
4'6"
4'0"
3'6"
3'0"

Accepting band video submissions
February 15 – March 14, 2016

Finalists will compete on The Lyric Theatre Stage
SATURDAY, MAY 7TH AT 7^{PM}

For contest details visit LyricTheatre.com

Benefiting The Lyric Theatre's
Arts and Education Programs

Sponsorships Available

For more information, contact Karin Leone,
Director of Education at 772-220-1942, ext 205
or Karin@LyricTheatre.com

SHOP DINE & UNWIND IN

Historic

DOWNTOWN STUART

Home to over 50 locally owned shops, restaurants, antique shops, art galleries & boutiques...all in a charming old Florida atmosphere!

PUBLIC VALET PARKING NOV-MAY Tues-Sat, 5-10p. \$5 cash only. **2 LOCATIONS:** City Hall Parking Lot & Haney Circle at LouRonzos Restaurant

historicdowntownstuart.com • stuartmainstreet.org
facebook.com/DowntownStuart • facebook.com/ShopLocalShopSmart

There is no better time than **NOW** for...



- Custom Cataract Surgery
- Advanced Technology Lens Implants
- Glaucoma & Macular Treatment
- Clear Lens Exchange
- Eyelid Surgery
- Dry Eye Treatment

The Doctors at **Florida Eye Group** use the most advanced technology available to treat and diagnose the severest of eye conditions.



DR. MONROE BENAİM

CALL NOW & "see what you are missing".

JUPITER 561.747.7777 | PORT ST. LUCIE 772.777.2210



Florida Eye Group
Eye Care, About You

DR. DAVID RAWLINSON
DR. ROBERT BARATTA

www.FloridaEyeGroup.com



SUMMER CAMP ENROLLMENT!

Sign up now for the Lyric's Awesome! Summer Camp. We are in for an exciting, fun-filled summer! Our summer camp is for kids of all backgrounds and interests, offered at an affordable rate. Students are encouraged to express themselves, embrace their talents, quirks and individuality.

Session One: June 13 - July 1
ALL THE WORLD'S A STAGE
 Performance: July 1st at 6:30pm

"All the World's a Stage and all the men and women merely players...and one man in his time plays many parts..." - Shakespeare

What will your role be? Campers will learn about customs and cultures from around the world, while contemplating what their role will be on and off the stage, while spreading messages of love and tolerance.

Session Two: July 11 - 29
WHERE THE WILD THINGS ARE
 Performance July 29th at 6:30pm

"Our task must be to free ourselves...to embrace all living creatures and the whole of nature and it's beauty." - Einstein

Campers will embark on a journey to far lands to engage in fun with all things wild, from the animal kingdom and beyond, with messages of conservation and ecology.

Ages 1st to 8th graders **Hours** M-F: 9am - 4pm

Contact the Lyric's Awesome! Summer Camp Director, Karin Leone
 at 772-220-1942, ext 205 or by email at Karin@lyrictheatre.com





What Role Will You Play at THE LYRIC?



Become a Member

The Fast Pass to great seats and more! Becoming a Lyric member is easy and affordable - and it offers big benefits too! For as little as \$35, you can enjoy advance notice of upcoming events and have the chance to purchase tickets before the general public. Higher membership levels offer even more privileges.



Be a Sidewalk "Star"

Some of our brightest stars have provided \$1,000 in underwriting to support the restoration fund for Stuart's Historic Showplace. You'll find these "stars" right under your feet as you arrive at The Lyric! In recognition of your contribution you'll receive a bronze star embedded in the sidewalk at the Theatre's entrance with an inscription of your choice.



Sponsor a Show

Individuals and businesses can literally get their names in lights when they sponsor a Lyric performance! As a show sponsor, you'll receive complimentary tickets with preferred seating and discounts on additional tickets. You may also help to introduce the artist and receive recognition for your sponsorship. Opportunities may also exist for a private "meet and greet" with the performers after the show. Sponsorships are an ideal way to entertain your clients or friends while providing favorable exposure for your business.



Be a Director

Should you wish to provide ongoing financial support to the Theatre over a five-year period, you will become an honored member of The Lyric Director's Circle. Your generosity will be recognized through a prominent listing on the Donor Wall in the Theatre lobby as well as a listing in *the Lyric* magazine. You'll also receive invitations to special events and personalized concierge service at the box office.

When you support The Lyric - by becoming a member, buying a sidewalk star, joining the Director's Circle or even sponsoring a show - you play a key role in bringing a diverse and exciting slate of world-renowned artists to the Treasure Coast. Your contribution is vital to underwriting The Lyric's daily operations and keeping ticket prices at popular levels. You're invited to play any of the following roles - or all of them! To become a Lyric Member, call Heather Long today at 772.220.1942, ext. 204 or visit LyricTheatre.com. To take part in one of our other great sponsorship opportunities, call the Artistic Director's office at 772.220.1942, ext. 208



The "Fast Pass" to Great Seats and More!

BECOME A MEMBER TODAY

Memberships start at ONLY \$35

Your tax-deductible contribution helps to underwrite The Lyric's daily operations and keeps ticket prices at popular rates. Annual memberships and donations help to provide the community with a home for the performing arts that enhances the quality of life, promotes arts education, and supports the local economy.

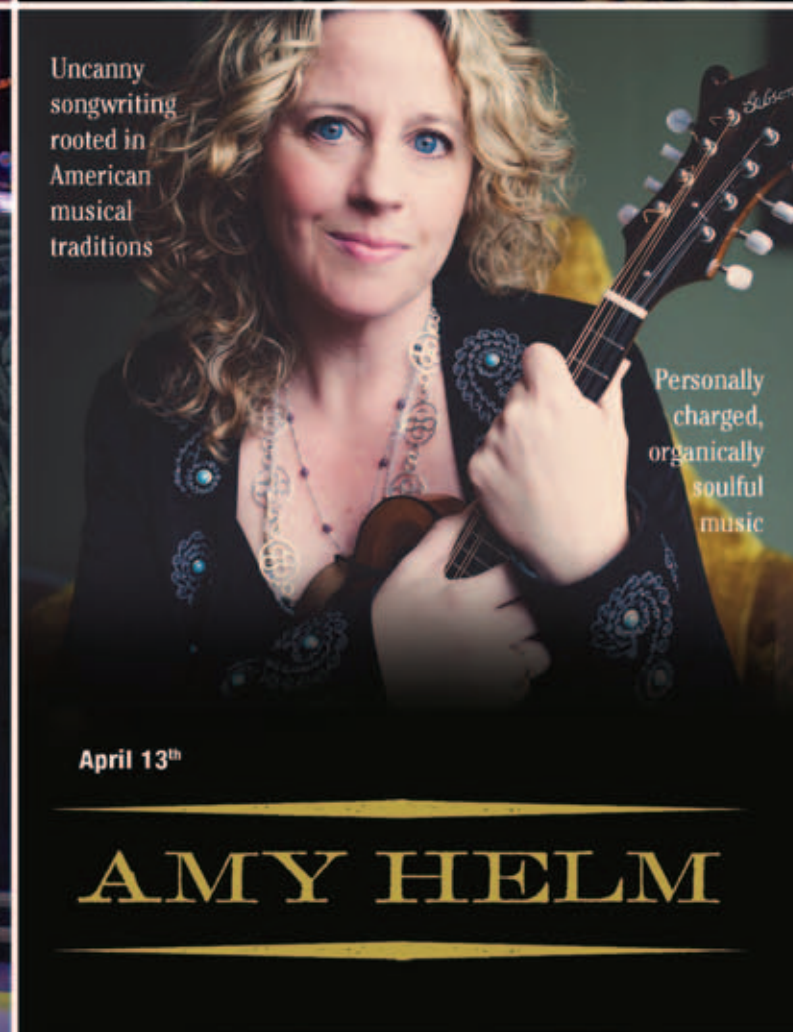
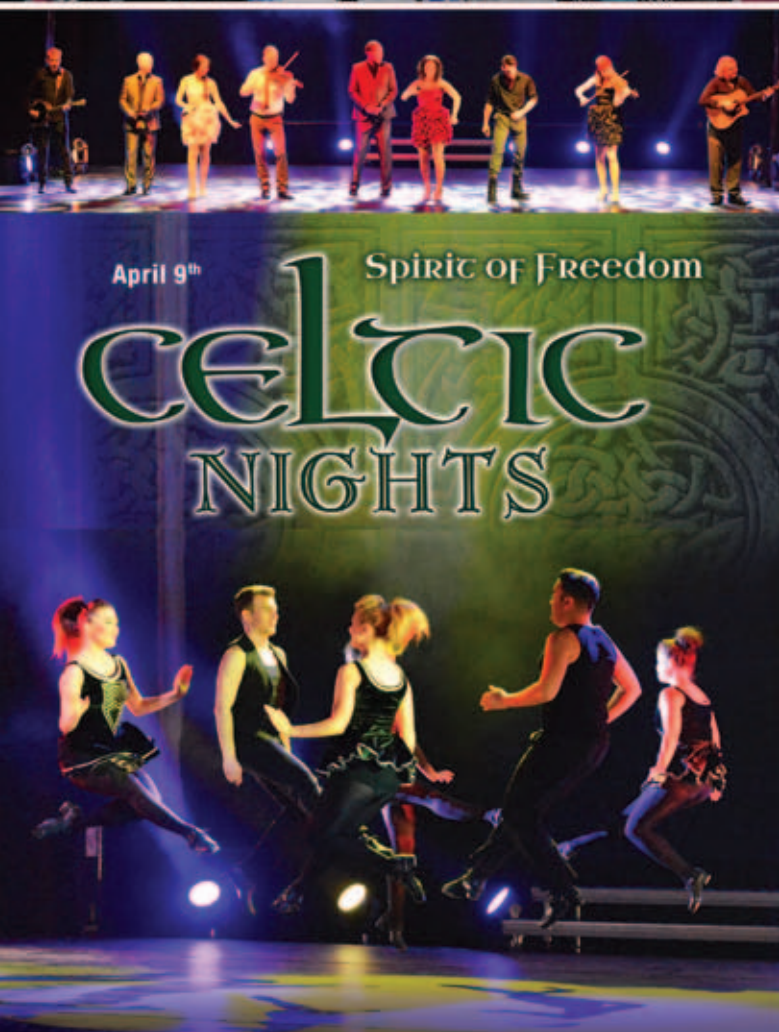
If you have any questions please contact Heather Long, Membership Director at 772-220-1942, ext. 204 or Membership@LyricTheatre.com

Members Enjoy the Benefits of

- Purchasing tickets in advance of the general public
- Get discounts at local restaurants and businesses*
- Receive advance notice of upcoming events



*Patron Privilege Card at the \$100 and up membership level



Brighton.

That's Amore

Italian tiles from the
Isle of Capri inspired
modern patterned beauties.

SAXX

HANDBAGS & ACCESSORIES

25 SW Osceola Street
Historic Downtown Stuart, FL 34994
772.287.9380

ARGENTO JEWELRY

27 SW Osceola Street • Historic Downtown Stuart, FL 34994 • 772.223.1647

You are cordially invited to

THE LYRIC THEATRE'S 90TH BIRTHDAY CELEBRATION AUCTION & ROAST

Thursday, March 3, 2016

The Lyric Theatre
59 SW Flagler Avenue
Historic Downtown Stuart

6:00 pm Silent Auction
7:30 pm Live Auction and Roast of John Loesser

Cocktail Reception Complimentary Valet
Cocktail Attire

.....

For more information or to RSVP,
contact Linda Prange, Development Director,
772-220-1942 extension 209
or development@lyrictheatre.com

Just a few of our Auction Items...

- Your own private and fully catered Super Bowl Party
- Stockholm in the Summer 5-day Private Sailing Cruise
- Raffle for a week in a romantic villa in the heart of Tuscany



MEMBERS ONLY

Join us for the

BURN THE MORTGAGE PARTY

Sunday, March 6, 2016

3-7pm

in The Lyric Theatre
Open House with Entertainment

Sponsored by **Oculina[®]
Bank**
"The Friendly Bank"



MAHI MAHI
served with Red Pepper and Local
Mango Salsa over Couscous and Quinoa
Pilaf and Fresh Local Vegetables

SOUTHERN STEAK & SEAFOOD

"Where casual meets upscale"



Just steps away from The Lyric Theatre in Downtown Stuart

Specializing in great service and hospitality serving only the freshest of local seafood and highest quality meats.

Happy Hour Daily from 4:00 – 7:00 in the bar

Daily Specials | Local "Fresh" Farm Ingredients | Family-Owned: Executive Chef Taylor



47 SW Flagler Avenue, Stuart, FL 34994 | Phone (772) 221-9517 | www.thegafford.com